

Number : WUXH00083253

Applicant : JIAXING HARLEY BABY CAR CO.,LTD
NO.123, JINSHA ROAD, XINCANG TOWN,
PINGHU CITY, ZHEJIANG PROVINCE,CHINA
Attn : ZHANG HUA

Date : Mar 20, 2019

Sample Description:

One (1) Group Of Submitted Sample Said To Be :
Item Name : Children Car.
Item No. : HL318.
Labelled Age Group : Ages 3+.
Packaging Provided By Applicant : Yes(Artwork).
Country Of Origin : China.

Tests Conducted:

As Requested By The Applicant, For Details Refer To Attached Page(s).

Conclusion:

Tested Samples	Standard	Result
Screened Components Of Submitted Sample	Screening By XRF Spectroscopy And Chemical Confirmation Test For RoHS Directive 2011/65/EU And (EU) 2015/863	Pass

Prepared And Checked By:
For Intertek Testing Services Wuxi Ltd.



Hobo Li
Manager



Tests Conducted (As Requested By The Applicant)

1 Tests Conducted

Determination Of Levels Of Regulated Substances In Electrotechnical Products, Elements Of Cadmium (Cd), Lead (Pb), Mercury (Hg), Chromium (Cr) and Bromine (Br) Contents Were Measured By XRF Spectroscopy And Chemical Confirmation Test For RoHS Restricted Substances.

(A) Results:

Part No.	Tested Components	Refer Information	Restricted Substance	XRF Result	Chemical Confirmation Result	Conclusion On Rohs
1	Big Body (Pink Nonmetal)	/	Cd	P	/	Pass
			Pb	P	/	
			Hg	P	/	
			Cr	P	/	
			Br	P	/	
2	Windshield (Black Nonmetal)	/	Cd	P	/	Pass
			Pb	P	/	
			Hg	P	/	
			Cr	P	/	
			Br	P	/	
3	Headlamp Shade (Transparent Nonmetal)	/	Cd	P	/	Pass
			Pb	P	/	
			Hg	P	/	
			Cr	P	/	
			Br	P	/	
4	Headlamp (Transparent Nonmetal)	/	Cd	P	/	Pass
			Pb	P	/	
			Hg	P	/	
			Cr	P	/	
			Br	P	/	
5	Black Nonmetal	/	Cd	P	/	Pass
			Pb	P	/	
			Hg	P	/	
			Cr	P	/	
			Br	P	/	

Tests Conducted (As Requested By The Applicant)

6	Black Nonmetal	/	Cd	P	/	Pass
			Pb	P	/	
			Hg	P	/	
			Cr	P	/	
			Br	P	/	
7	Yellow Nonmetal	/	Cd	P	/	Pass
			Pb	P	/	
			Hg	P	/	
			Cr	P	/	
			Br	P	/	
8	Knob (Silver Metal)	/	Cd	P	/	Pass
			Pb	X	Pb=ND	
			Hg	P	/	
			Cr	P	/	
			Br	NA	/	
9	Decoration Bar (Silver Nonmetal)	/	Cd	P	/	Pass
			Pb	P	/	
			Hg	P	/	
			Cr	P	/	
			Br	P	/	
10	Steering Wheel (Yellow Nonmetal)	/	Cd	P	/	Pass
			Pb	P	/	
			Hg	P	/	
			Cr	P	/	
			Br	P	/	
11	Steering Wheel (Black Nonmetal)	/	Cd	P	/	Pass
			Pb	P	/	
			Hg	P	/	
			Cr	P	/	
			Br	P	/	



Tests Conducted (As Requested By The Applicant)

12	Keyboard (Silver Nonmetal)	/	Cd	P	/	Pass
			Pb	P	/	
			Hg	P	/	
			Cr	P	/	
			Br	P	/	
13	Headrest (Black Nonmetal)	/	Cd	P	/	Pass
			Pb	P	/	
			Hg	P	/	
			Cr	P	/	
			Br	P	/	
14	Reflector (Red Nonmetal)	/	Cd	P	/	Pass
			Pb	P	/	
			Hg	P	/	
			Cr	P	/	
			Br	P	/	
15	Reflector (Black Nonmetal)	/	Cd	P	/	Pass
			Pb	P	/	
			Hg	P	/	
			Cr	P	/	
			Br	P	/	
16	Reflector (White Nonmetal)	/	Cd	P	/	Pass
			Pb	P	/	
			Hg	P	/	
			Cr	P	/	
			Br	P	/	
17	Reflector Sticker (White Nonmetal)	/	Cd	P	/	Pass
			Pb	P	/	
			Hg	P	/	
			Cr	P	/	
			Br	P	/	

Tests Conducted (As Requested By The Applicant)

18	Stickers (Blue Nonmetal)	/	Cd	P	/	Pass
			Pb	P	/	
			Hg	P	/	
			Cr	P	/	
			Br	P	/	
19	Sticker (Colour Nonmetal)	/	Cd	P	/	Pass
			Pb	P	/	
			Hg	P	/	
			Cr	P	/	
			Br	P	/	
20	Mp3 Sticker (Color Nonmetal)	/	Cd	P	/	Pass
			Pb	P	/	
			Hg	P	/	
			Cr	P	/	
			Br	P	/	
21	Charging Paste (Colored Nonmetal)	/	Cd	P	/	Pass
			Pb	P	/	
			Hg	P	/	
			Cr	P	/	
			Br	P	/	
22	Gear Button (Black Nonmetal)	/	Cd	P	/	Pass
			Pb	P	/	
			Hg	P	/	
			Cr	P	/	
			Br	P	/	
23	Gear Panel (Silver Nonmetal)	/	Cd	P	/	Pass
			Pb	P	/	
			Hg	P	/	
			Cr	P	/	
			Br	P	/	

Tests Conducted (As Requested By The Applicant)

24	Hub (Silver Nonmetal)	/	Cd	P	/	Pass
			Pb	P	/	
			Hg	P	/	
			Cr	P	/	
			Br	P	/	
25	Tire (Black Nonmetal)	/	Cd	P	/	Pass
			Pb	P	/	
			Hg	P	/	
			Cr	P	/	
			Br	P	/	
26	Brake Disc (Gray Nonmetal)	/	Cd	P	/	Pass
			Pb	P	/	
			Hg	P	/	
			Cr	P	/	
			Br	P	/	
27	Brake Calipers (Red Nonmetal)	/	Cd	P	/	Pass
			Pb	P	/	
			Hg	P	/	
			Cr	P	/	
			Br	P	/	
28	Switch Button (Red Nonmetal)	/	Cd	P	/	Pass
			Pb	P	/	
			Hg	P	/	
			Cr	P	/	
			Br	P	/	
29	Switch Case (Black Nonmetal)	/	Cd	P	/	Pass
			Pb	P	/	
			Hg	P	/	
			Cr	P	/	
			Br	X	PBBs=ND&PBDEs=ND	

Tests Conducted (As Requested By The Applicant)

30	Stickers (Black Nonmetal)	/	Cd	P	/	Pass
			Pb	P	/	
			Hg	P	/	
			Cr	P	/	
			Br	P	/	
31	Key (Red Nonmetal)	/	Cd	P	/	Pass
			Pb	P	/	
			Hg	P	/	
			Cr	P	/	
			Br	P	/	
32	Keyboard Case (Black Nonmetal)	/	Cd	P	/	Pass
			Pb	P	/	
			Hg	P	/	
			Cr	P	/	
			Br	P	/	
33	Door Lock (Red Nonmetal)	/	Cd	P	/	Pass
			Pb	P	/	
			Hg	P	/	
			Cr	P	/	
			Br	P	/	
34	Taillight (Red Nonmetal)	/	Cd	P	/	Pass
			Pb	P	/	
			Hg	P	/	
			Cr	P	/	
			Br	P	/	
35	Light Bar (Red Nonmetal)	/	Cd	P	/	Pass
			Pb	P	/	
			Hg	P	/	
			Cr	P	/	
			Br	P	/	

Tests Conducted (As Requested By The Applicant)

36	Exhaust Pipe (Silver Nonmetal)	/	Cd	P	/	Pass
			Pb	P	/	
			Hg	P	/	
			Cr	P	/	
			Br	P	/	
37	Back Fog Lamp (Red Nonmetal)	/	Cd	P	/	Pass
			Pb	P	/	
			Hg	P	/	
			Cr	P	/	
			Br	P	/	
38	Tail Box Cover (Red Nonmetal)	/	Cd	P	/	Pass
			Pb	P	/	
			Hg	P	/	
			Cr	P	/	
			Br	P	/	
39	Tail Cover Decoration (Black Nonmetal)	/	Cd	P	/	Pass
			Pb	P	/	
			Hg	P	/	
			Cr	P	/	
			Br	P	/	
40	Tail Cover Decoration (Silver Nonmetal)	/	Cd	P	/	Pass
			Pb	P	/	
			Hg	P	/	
			Cr	P	/	
			Br	P	/	
41	Logo (Silver Nonmetal)	/	Cd	P	/	Pass
			Pb	P	/	
			Hg	P	/	
			Cr	P	/	
			Br	P	/	

Tests Conducted (As Requested By The Applicant)

42	Post Logo (Silver Nonmetal)	/	Cd	P	/	Pass
			Pb	P	/	
			Hg	P	/	
			Cr	P	/	
			Br	P	/	
43	Cushion Logo (Silver Nonmetal)	/	Cd	P	/	Pass
			Pb	P	/	
			Hg	P	/	
			Cr	P	/	
			Br	P	/	
44	Gear Case (White Nonmetal)	/	Cd	P	/	Pass
			Pb	P	/	
			Hg	P	/	
			Cr	P	/	
			Br	P	/	
45	Shaft Sleeve (White Nonmetal)	/	Cd	P	/	Pass
			Pb	P	/	
			Hg	P	/	
			Cr	P	/	
			Br	P	/	
46	Accelerator Pedal (Black Nonmetal)	/	Cd	P	/	Pass
			Pb	P	/	
			Hg	P	/	
			Cr	P	/	
			Br	P	/	
47	Heat Shrinkable Sheath (Black Nonmetal)	/	Cd	P	/	Pass
			Pb	P	/	
			Hg	P	/	
			Cr	P	/	
			Br	P	/	

Tests Conducted (As Requested By The Applicant)

48	Plug-In (White Nonmetal)	/	Cd	P	/	Pass
			Pb	P	/	
			Hg	P	/	
			Cr	P	/	
			Br	P	/	
49	Plug-In (Beige Nonmetal)	/	Cd	P	/	Pass
			Pb	P	/	
			Hg	P	/	
			Cr	P	/	
			Br	P	/	
50	Plug-In (White Nonmetal)	/	Cd	P	/	Pass
			Pb	P	/	
			Hg	P	/	
			Cr	P	/	
			Br	P	/	
51	Plug-In (White Nonmetal)	/	Cd	P	/	Pass
			Pb	P	/	
			Hg	P	/	
			Cr	P	/	
			Br	P	/	
52	Plug-In (White Nonmetal)	/	Cd	P	/	Pass
			Pb	P	/	
			Hg	P	/	
			Cr	P	/	
			Br	P	/	
53	Plug-In (Silver Metal)	/	Cd	P	/	Pass
			Pb	P	/	
			Hg	P	/	
			Cr	P	/	
			Br	NA	/	



Tests Conducted (As Requested By The Applicant)

54	Connector (Copper Metal)	/	Cd	P	/	Pass
			Pb	P	/	
			Hg	P	/	
			Cr	P	/	
			Br	NA	/	
55	Line Sheath (Black Nonmetal)	/	Cd	P	/	Pass
			Pb	P	/	
			Hg	P	/	
			Cr	P	/	
			Br	P	/	
56	Linen (Brown Nonmetal)	/	Cd	P	/	Pass
			Pb	P	/	
			Hg	P	/	
			Cr	P	/	
			Br	P	/	
57	Line Skin (Blue Nonmetal)	/	Cd	P	/	Pass
			Pb	P	/	
			Hg	P	/	
			Cr	P	/	
			Br	P	/	
58	Line Skin (Green Nonmetal)	/	Cd	P	/	Pass
			Pb	P	/	
			Hg	P	/	
			Cr	P	/	
			Br	P	/	
59	Linen (Yellow Nonmetal)	/	Cd	P	/	Pass
			Pb	P	/	
			Hg	P	/	
			Cr	P	/	
			Br	P	/	



Tests Conducted (As Requested By The Applicant)

60	Linen (Yellow Nonmetal)	/	Cd	P	/	Pass
			Pb	P	/	
			Hg	P	/	
			Cr	P	/	
			Br	P	/	
61	Linen (Red Nonmetal)	/	Cd	P	/	Pass
			Pb	P	/	
			Hg	P	/	
			Cr	P	/	
			Br	P	/	
62	Linen (White Nonmetal)	/	Cd	P	/	Pass
			Pb	P	/	
			Hg	P	/	
			Cr	P	/	
			Br	P	/	
63	Linen (Black Nonmetal)	/	Cd	P	/	Pass
			Pb	P	/	
			Hg	P	/	
			Cr	P	/	
			Br	P	/	
64	Wire Core (Copper Metal)	/	Cd	P	/	Pass
			Pb	P	/	
			Hg	P	/	
			Cr	P	/	
			Br	NA	/	
65	Sheath (Semi-Transparent Nonmetal)	/	Cd	P	/	Pass
			Pb	P	/	
			Hg	P	/	
			Cr	P	/	
			Br	P	/	

Tests Conducted (As Requested By The Applicant)

66	White Nonmetal	/	Cd	P	/	Pass
			Pb	P	/	
			Hg	P	/	
			Cr	P	/	
			Br	P	/	
67	Key (Black Nonmetal)	/	Cd	P	/	Pass
			Pb	P	/	
			Hg	P	/	
			Cr	P	/	
			Br	P	/	
68	Indicator Lamp (Brown Nonmetal)	/	Cd	P	/	Pass
			Pb	P	/	
			Hg	P	/	
			Cr	P	/	
			Br	P	/	
69	Adapter Housing (Black Nonmetal)	/	Cd	P	/	Pass
			Pb	P	/	
			Hg	P	/	
			Cr	P	/	
			Br	X	PBBs=ND& PBDEs=350mg/kg	
70	Label Stickers (Silver Nonmetal)	/	Cd	P	/	Pass
			Pb	P	/	
			Hg	P	/	
			Cr	P	/	
			Br	P	/	
71	Linen (Black Nonmetal)	/	Cd	P	/	Pass
			Pb	P	/	
			Hg	P	/	
			Cr	P	/	
			Br	P	/	

Tests Conducted (As Requested By The Applicant)

72	Linen Sheath (Black Nonmetal)	/	Cd	P	/	Pass
			Pb	P	/	
			Hg	P	/	
			Cr	P	/	
			Br	P	/	
73	Plug Case (Black Nonmetal)	/	Cd	P	/	Pass
			Pb	P	/	
			Hg	P	/	
			Cr	P	/	
			Br	P	/	
74	Plug Core (Silver Metal)	/	Cd	P	/	Pass
			Pb	P	/	
			Hg	P	/	
			Cr	P	/	
			Br	NA	/	
75	Insulation Layer (Black Nonmetal)	/	Cd	P	/	Pass
			Pb	P	/	
			Hg	P	/	
			Cr	P	/	
			Br	X	PBBs=ND& PBDEs=366mg/kg	
76	Silver Metal	/	Cd	P	/	Pass
			Pb	P	/	
			Hg	P	/	
			Cr	P	/	
			Br	NA	/	
77	Pin (Silver Metal)	/	Cd	P	/	Pass
			Pb	P	/	
			Hg	P	/	
			Cr	P	/	
			Br	NA	/	

Tests Conducted (As Requested By The Applicant)

78	Open Pin (Silver Metal)	/	Cd	P	/	Pass
			Pb	P	/	
			Hg	P	/	
			Cr	P	/	
			Br	NA	/	
79	Gasket (Silver Metal)	/	Cd	P	/	Pass
			Pb	P	/	
			Hg	P	/	
			Cr	P	/	
			Br	NA	/	
80	Screw (Silver Metal)	/	Cd	P	/	Pass
			Pb	P	/	
			Hg	P	/	
			Cr	P	/	
			Br	NA	/	
81	Spring (Silver Metal)	/	Cd	P	/	Pass
			Pb	P	/	
			Hg	P	/	
			Cr	P	/	
			Br	NA	/	
82	Chip (Black Nonmetal)	/	Cd	P	/	Pass
			Pb	P	/	
			Hg	P	/	
			Cr	P	/	
			Br	P	/	
83	Switch Button (Black Nonmetal)	/	Cd	P	/	Pass
			Pb	P	/	
			Hg	P	/	
			Cr	P	/	
			Br	P	/	



Tests Conducted (As Requested By The Applicant)

84	Switch Top Cover (Silver Metal)	/	Cd	P	/	Pass
			Pb	P	/	
			Hg	P	/	
			Cr	P	/	
			Br	NA	/	
85	Switch Contacts (Silver Metal)	/	Cd	P	/	Pass
			Pb	P	/	
			Hg	P	/	
			Cr	P	/	
			Br	NA	/	
86	Switch Case (Black Nonmetal)	/	Cd	P	/	Pass
			Pb	P	/	
			Hg	P	/	
			Cr	P	/	
			Br	P	/	
87	Switch Case Pin (Silver Metal)	/	Cd	P	/	Pass
			Pb	P	/	
			Hg	P	/	
			Cr	P	/	
			Br	NA	/	
88	Crystal Oscillator (Silver Metal)	/	Cd	P	/	Pass
			Pb	P	/	
			Hg	P	/	
			Cr	P	/	
			Br	NA	/	
89	Rectangular PCB (Yellow-Green Nonmetal)	/	Cd	P	/	Pass
			Pb	P	/	
			Hg	P	/	
			Cr	P	/	
			Br	P	/	



Tests Conducted (As Requested By The Applicant)

90	Arrangement Socket (White Nonmetal)	/	Cd	P	/	Pass
			Pb	P	/	
			Hg	P	/	
			Cr	P	/	
			Br	P	/	
91	Chip (Black Nonmetal)	/	Cd	P	/	Pass
			Pb	P	/	
			Hg	P	/	
			Cr	P	/	
			Br	P	/	
92	Two-Pin Socket (White Nonmetal)	/	Cd	P	/	Pass
			Pb	P	/	
			Hg	P	/	
			Cr	P	/	
			Br	P	/	
93	Electrolytic Capacitor Shell (Green Nonmetal)	/	Cd	P	/	Pass
			Pb	P	/	
			Hg	P	/	
			Cr	P	/	
			Br	P	/	
94	Electrolytic Capacitor Aluminum Shell (Silver Metal)	/	Cd	P	/	Pass
			Pb	P	/	
			Hg	P	/	
			Cr	P	/	
			Br	NA	/	
95	Electrolytic Capacitor Electrolytic Paper (Beige Nonmetal)	/	Cd	P	/	Pass
			Pb	P	/	
			Hg	P	/	
			Cr	P	/	
			Br	P	/	



Tests Conducted (As Requested By The Applicant)

96	Electrolytic Capacitor Cathode Electrolytic Film (Dark Silver Metal)	/	Cd	P	/	Pass
			Pb	P	/	
			Hg	P	/	
			Cr	P	/	
			Br	NA	/	
97	Electrolytic Capacitor Negative Electrolytic Film (Dark Silver Metal)	/	Cd	P	/	Pass
			Pb	P	/	
			Hg	P	/	
			Cr	P	/	
			Br	NA	/	
98	Electrolytic Capacitor Plug (Black Nonmetal)	/	Cd	P	/	Pass
			Pb	P	/	
			Hg	P	/	
			Cr	P	/	
			Br	P	/	
99	Electrolytic Capacitor Connector (Dark Silver Metal)	/	Cd	P	/	Pass
			Pb	P	/	
			Hg	P	/	
			Cr	P	/	
			Br	NA	/	
100	PCB (Green Nonmetal)	/	Cd	P	/	Pass
			Pb	P	/	
			Hg	P	/	
			Cr	P	/	
			Br	X	PBBs=ND&PBDEs=ND	

Remark: X = Inconclusive result (Further chemical test was suggested (see table (B).))

F = Fail (Exceeded the upper screening limits of table (B))

NA = Not applicable

ND = Not detected

ppm = Parts per million = mg/kg

Tests Conducted (As Requested By The Applicant)

(B) XRF screening limits in mg/kg for regulated elements in various matrices.

Element	Polymer materials	Metallic materials	Composite materials
Cd	$P \leq 70 < X < 130 \leq F$	$P \leq 70 < X < 130 \leq F$	$P \leq 70 < X < 150 \leq F$
Pb	$P \leq 700 < X < 1300 \leq F$	$P \leq 700 < X < 1300 \leq F$	$P \leq 500 < X < 1500 \leq F$
Hg	$P \leq 700 < X < 1300 \leq F$	$P \leq 700 < X < 1300 \leq F$	$P \leq 500 < X < 1500 \leq F$
Cr	$P \leq 700 < X$	$P \leq 700 < F$	$P \leq 500 < X$
Br	$P \leq 300 < X$	Not applicable	$P \leq 250 < X$

(C) Estimated detection limits in mg/kg for regulated elements in various matrices.

Element	Polymer materials	Metallic materials	Composite materials
Cd	50	70	70
Pb	100	200	200
Hg	100	200	200
Cr	100	200	200
Br	200	Not applicable	200

Disclaimers:

This XRF Screening Report Is For Reference Purposes Only. The Applicant Shall Make Its/His/Her Own Judgment As To Whether The Information Provided In This XRF Screening Report Is Sufficient For Its/His/Her Purposes.

The Results Shown In This XRF Screening Report Will Differ Based On Various Factors, Including But Not Limited To, The Sample Size, Thickness, Area, Surface Flatness, Equipment Parameters And Matrix Effect (E.G. Plastic, Rubber, Metal, Glass, Ceramic Etc.). Further Wet Chemical Pre-Treatment With Relevant Chemical Equipment Analysis Is Required To Obtain Quantitative Data.



Tests Conducted (As Requested By The Applicant)

(D) Chemical confirmation test methods:

Testing item	Testing method	Reporting limit
Cadmium (Cd) Content	With reference to IEC 62321-5:2013, by acid digestion and determined by ICP - OES	2 mg/kg
Lead (Pb) Content	With reference to IEC 62321-5:2013, by acid digestion and determined by ICP - OES	2 mg/kg
Mercury (Hg) Content	With reference to IEC 62321-4:2013+A1:2017, by acid digestion and determined by ICP - OES	2 mg/kg
Chromium (VI)(Cr ⁶⁺) Content	With reference to IEC 62321-7-2:2017 , by alkaline digestion and determined by UV-VIS Spectrophotometer	10 mg/kg
Chromium (VI) (Cr ⁶⁺) Content	With reference to IEC 62321-7-1:2015, by boiling water extraction and determined by UV-VIS Spectrophotometer	0.10 µg/cm ²
Polybrominated Biphenyls (PBBs)& Polybrominated Diphenyl Ethers (PBDEs) Content	With reference to IEC 62321-6 :2015, by solvent extraction and determined by GC/MS and further HPLC confirmation when necessary	5 mg/kg

(E) RoHS requirement

Restricted substances	Limits
Cadmium (Cd)	0.01% (100 ppm)
Lead (Pb)	0.1% (1000 ppm)
Mercury (Hg)	0.1% (1000 ppm)
Chromium (VI) (Cr ⁶⁺)	0.1% (1000 ppm)
Polybrominated biphenyls (PBBs)	0.1% (1000 ppm)
Polybrominated diphenyl ethers (PBDEs)	0.1% (1000 ppm)

The Above Limits Were Quoted From RoHS Directive 2011/65/EU And (EU)2015/863.

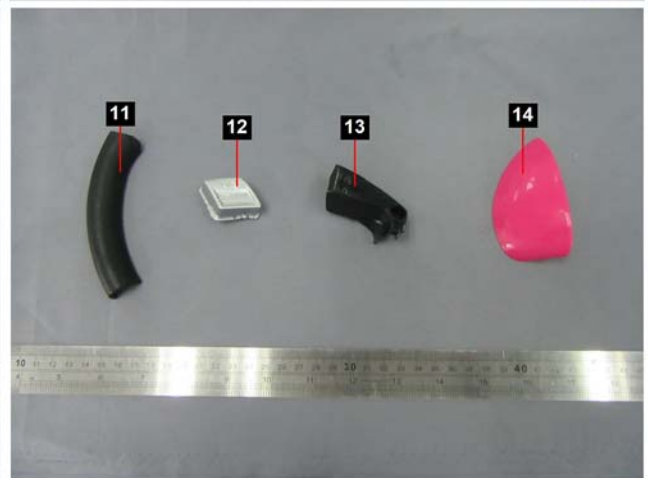
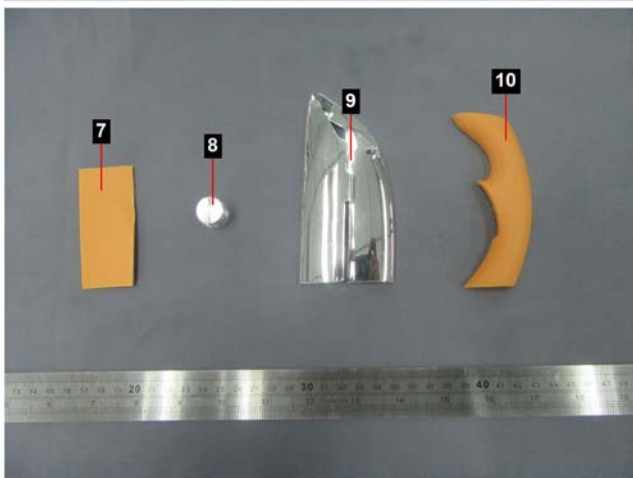
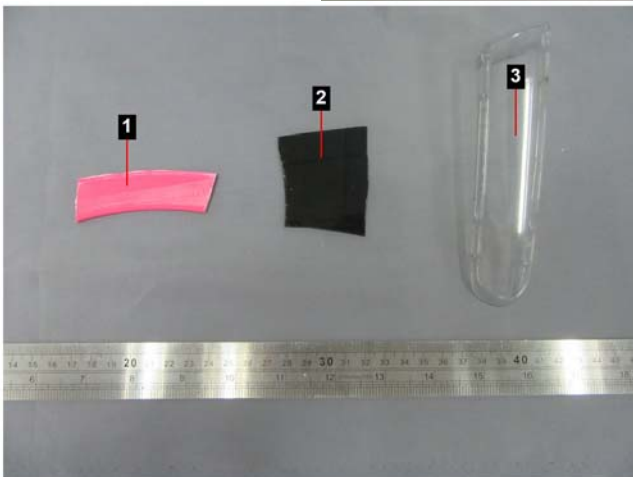
Date Sample Received: Mar 08, 2019

Testing Period: Mar 08, 2019 To Mar 20, 2019

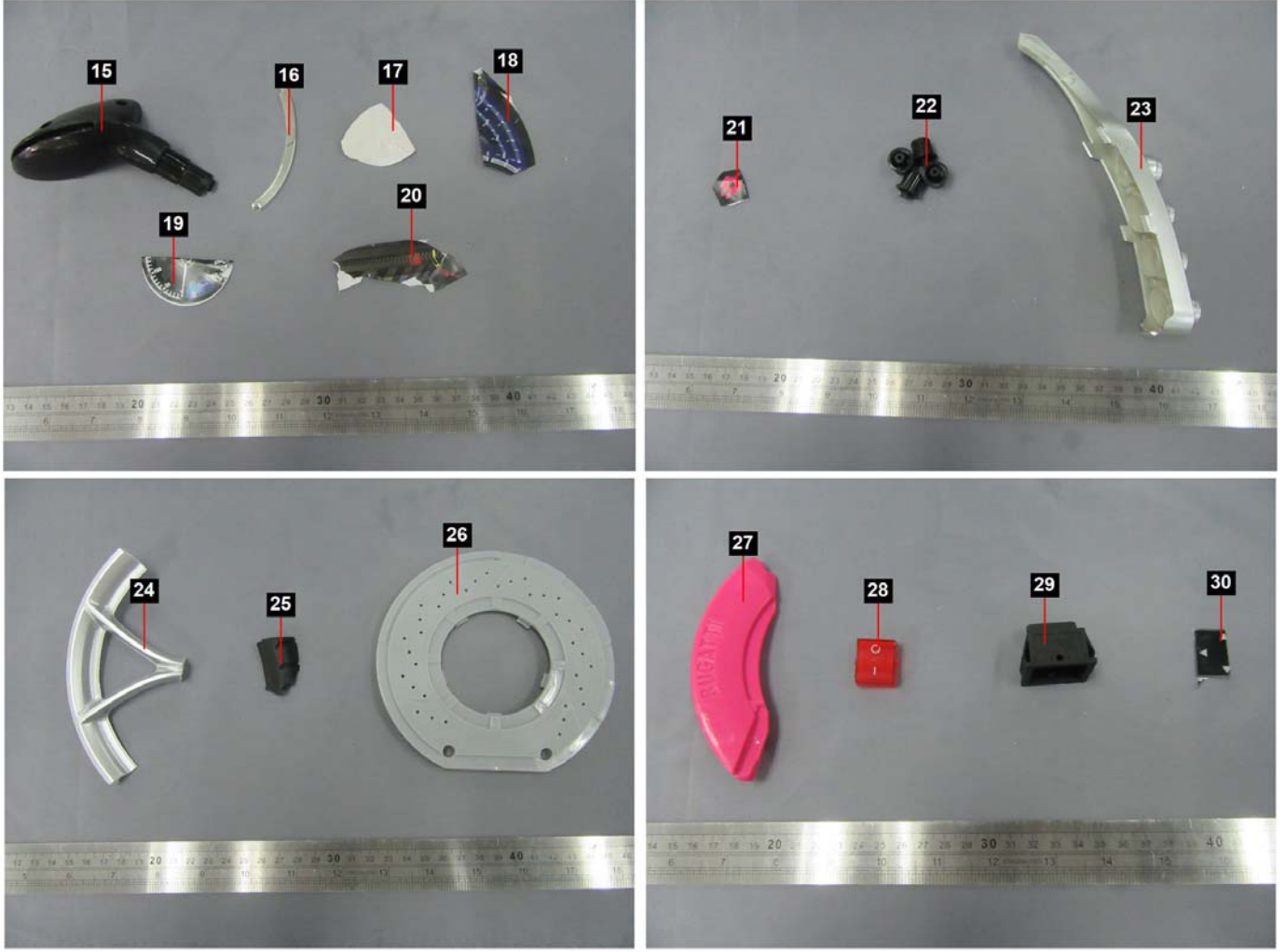


Tests Conducted (As Requested By The Applicant)

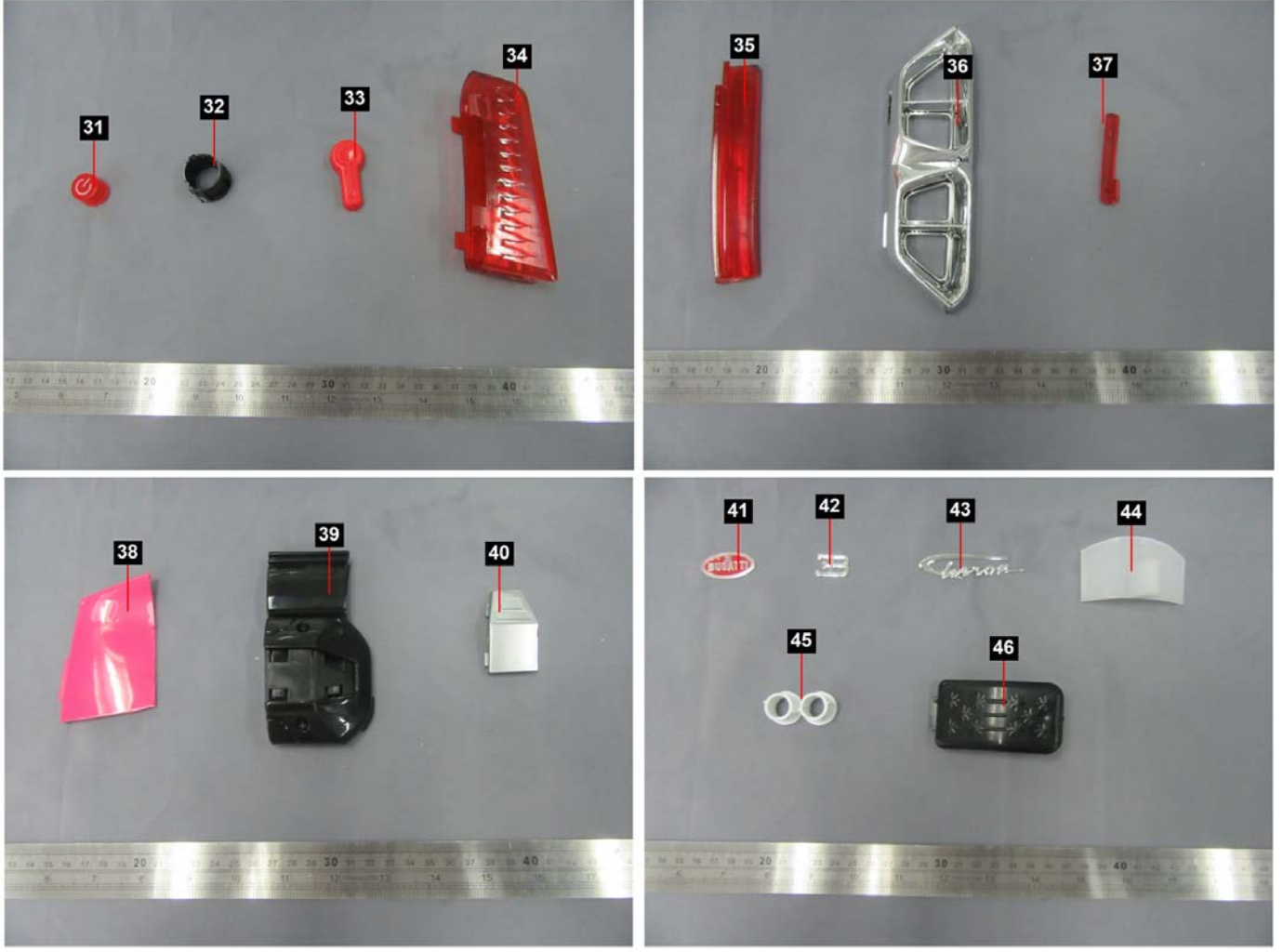
Photo



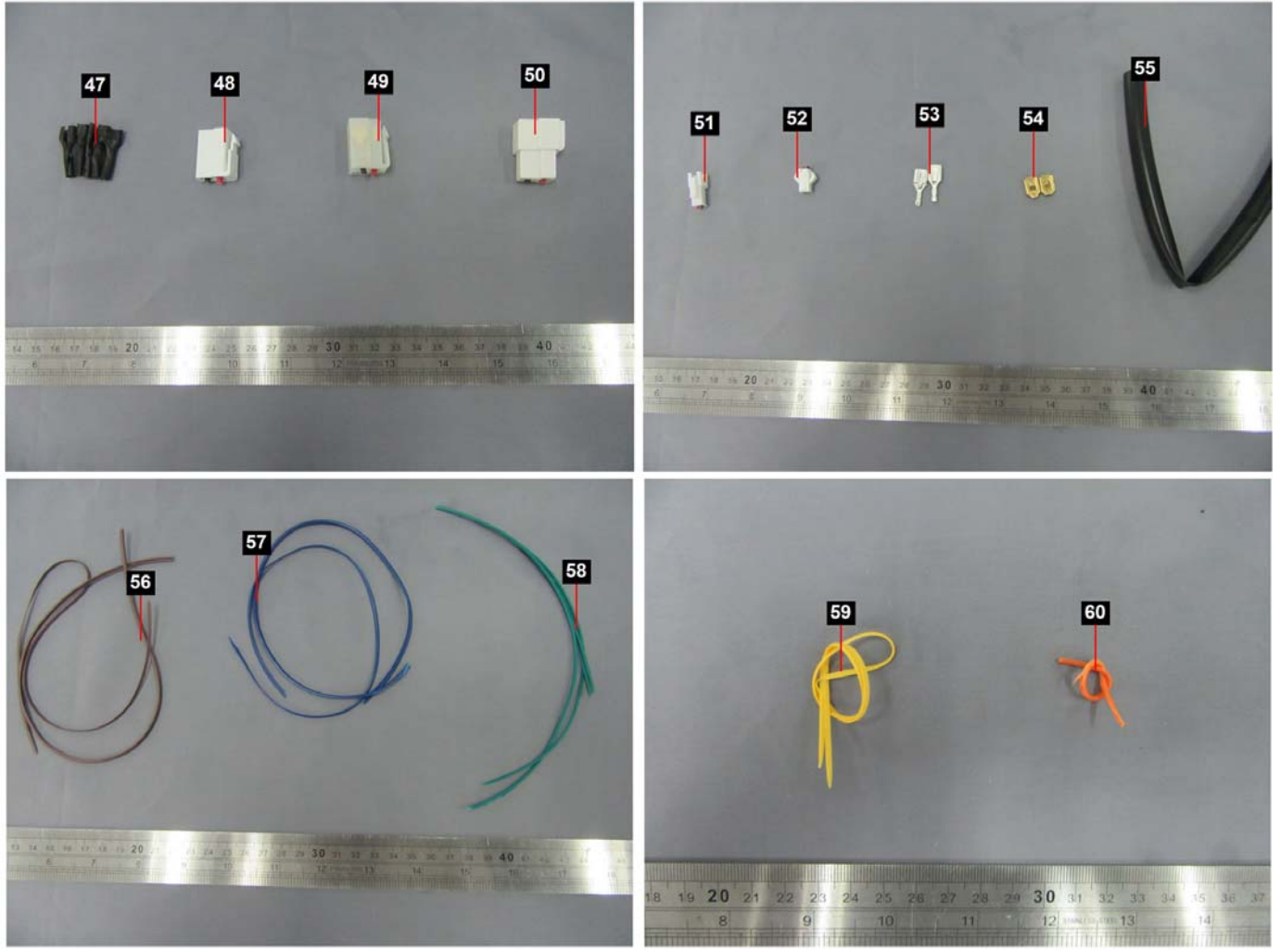
Tests Conducted (As Requested By The Applicant)



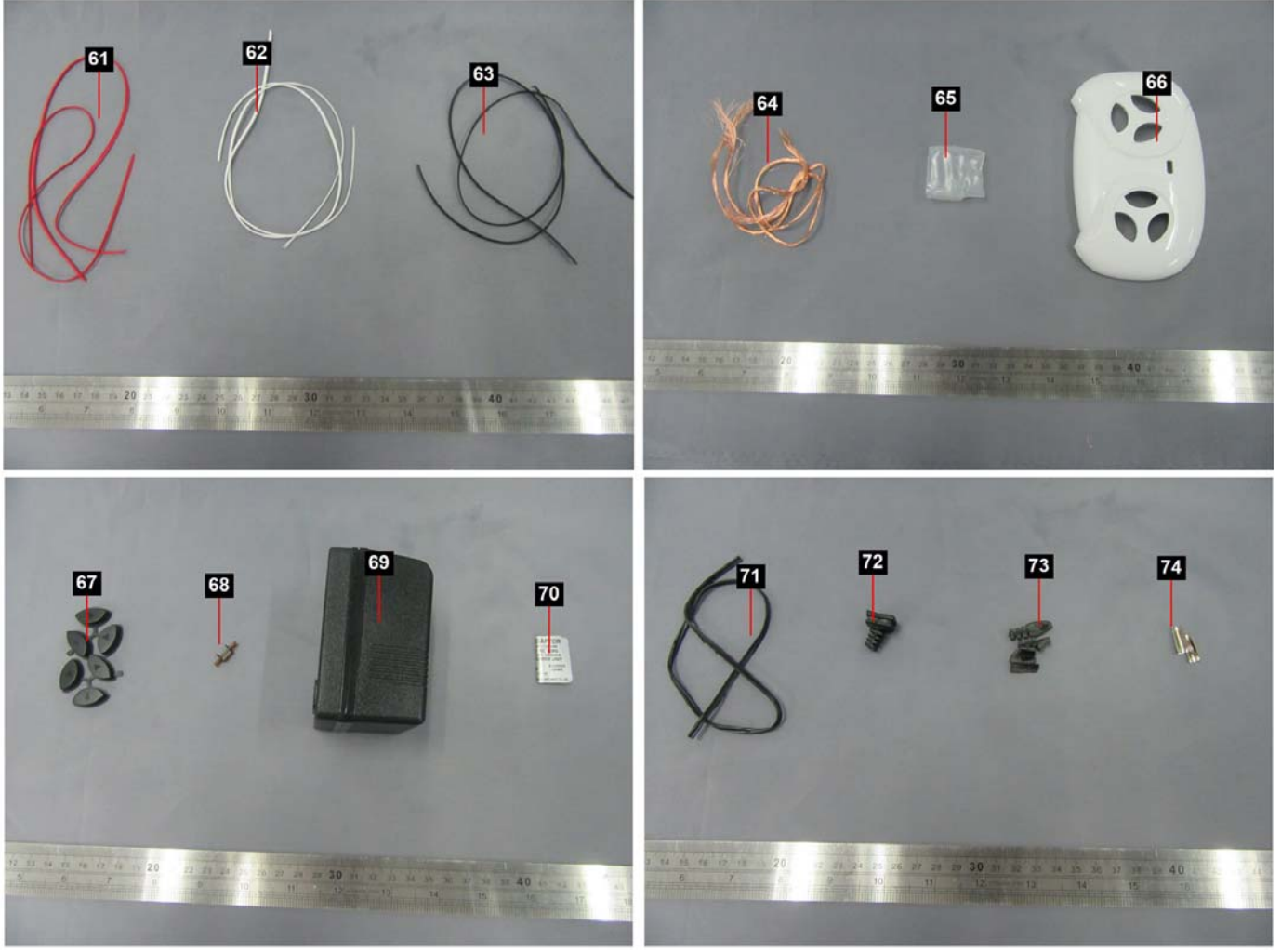
Tests Conducted (As Requested By The Applicant)



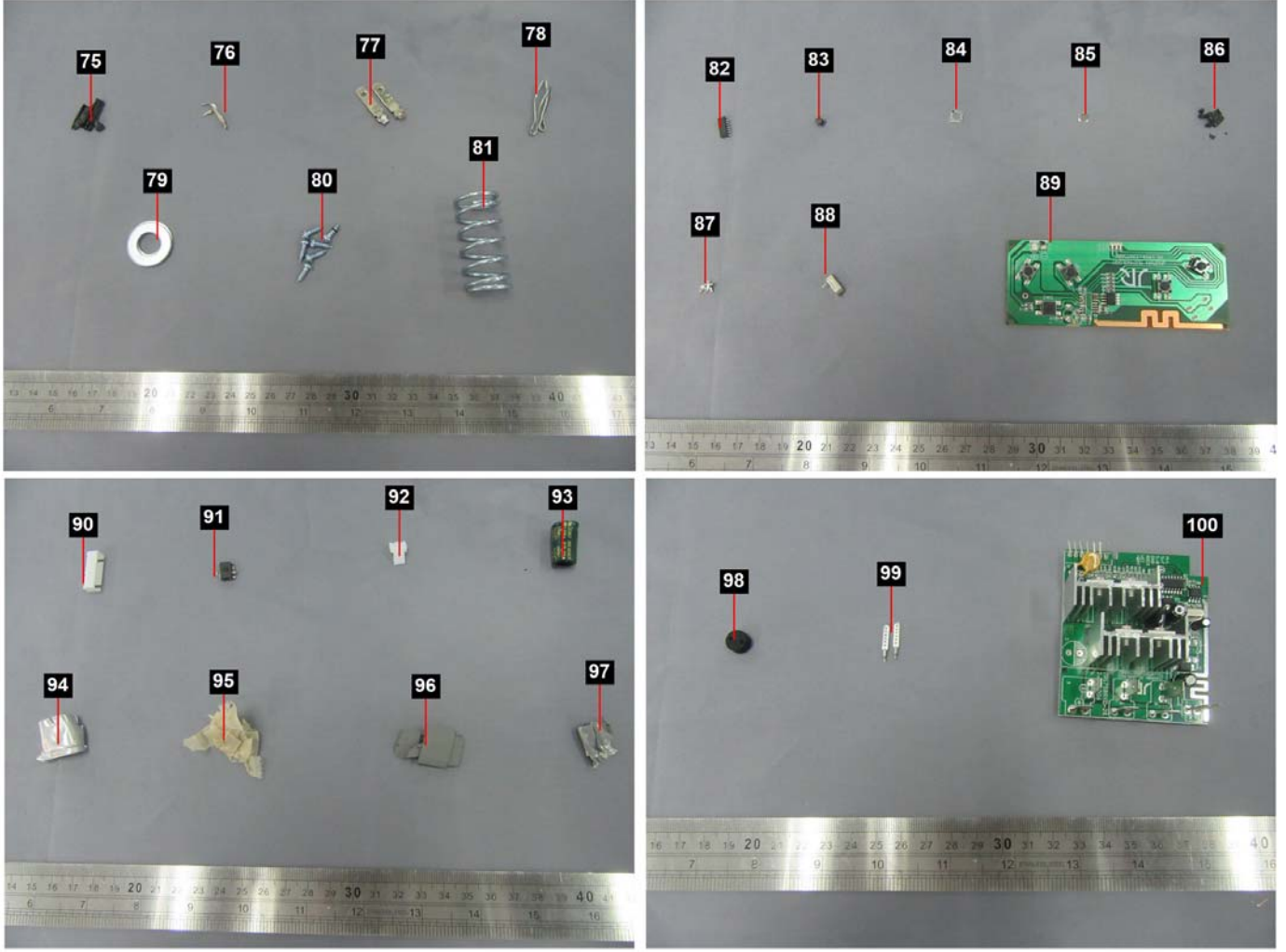
Tests Conducted (As Requested By The Applicant)



Tests Conducted (As Requested By The Applicant)



Tests Conducted (As Requested By The Applicant)



End of Report

This report is made solely on the basis of your instructions and/or information and materials supplied by you. It is not intended to be a recommendation for any particular course of action. Intertek does not accept a duty of care or any other responsibility to any person other than the Client in respect of this report and only accepts liability to the Client insofar as is expressly contained in the terms and conditions governing Intertek's provision of services to you. Intertek makes no warranties or representations either express or implied with respect to this report save as provided for in those terms and conditions. We have aimed to conduct the Review on a diligent and careful basis and we do not accept any liability to you for any loss arising out of or in connection with this report, in contract, tort, by statute or otherwise, except in the event of our gross negligence or wilful misconduct.

This report shall not be reproduced except in full, without written approval of the laboratory

