

Number : WUXH00085706

Applicant : JIAXING HARLEY BABY CAR CO.,LTD
NO.123, JINSHA ROAD, XINCANG TOWN,
PINGHU CITY, ZHEJIANG PROVINCE,CHINA
Attn : ZHANG HUA

Date : May 21, 2019

Sample Description:

One(1) Group Of Submitted Sample Said To Be :
Item Name : Children Car.
Item No. : HL328.
Country Of Origin : China.

Tests Conducted:

As Requested By The Applicant, For Details Refer To Attached Page(s).

Conclusion:

Tested Samples	Standard	Result
Screened Components Of Submitted Sample	Screening By XRF Spectroscopy And Chemical Confirmation Test For RoHS Directive 2011/65/EU And (EU) 2015/863	Pass

Prepared And Checked By:
For Intertek Testing Services Wuxi Ltd.



Hobo Li
Manager



Tests Conducted (As Requested By The Applicant)

1 Tests Conducted

Cadmium (Cd), Lead (Pb), Mercury (Hg), Chromium (Cr) and Bromine (Br) content were measured with reference to IEC 62321-3-1 Edition 1.0: 2013 by XRF spectroscopy and chemical confirmation test for RoHS restricted substances. And Phthalates content were determined by Gas Chromatographic-Mass Spectrometric (GC-MS).

(A) Results:

Part No.	Tested Components	Refer information	Restricted Substance	XRF Result	Chemical Confirmation result	Conclusion on RoHS
1	Pedal base (black nonmetal)	/	Cd	P	/	Pass
			Pb	P	/	
			Hg	P	/	
			Cr	P	/	
			Br	P	/	
2	Pedal (black nonmetal)	/	Cd	P	/	Pass
			Pb	P	/	
			Hg	P	/	
			Cr	P	/	
			Br	P	/	
3	Button (black nonmetal)	/	Cd	P	/	Pass
			Pb	P	/	
			Hg	P	/	
			Cr	P	/	
			Br	X	PBBs=ND&PBDEs=ND	
4	Plastic Shell (Black Nonmetal)	/	Cd	P	/	Pass
			Pb	P	/	
			Hg	P	/	
			Cr	P	/	
			Br	P	/	
5	Plastic Shell (Black Nonmetal)	/	Cd	P	/	Pass
			Pb	P	/	
			Hg	P	/	
			Cr	P	/	
			Br	P	/	
6	Plastic Shell	/	Cd	P	/	Pass

Tests Conducted (As Requested By The Applicant)

	(Black Nonmetal)		Pb	P	/	
			Hg	P	/	
			Cr	P	/	
			Br	P	/	
7	Plastic Shell (Black Nonmetal)	/	Cd	P	/	Pass
			Pb	P	/	
			Hg	P	/	
			Cr	P	/	
			Br	P	/	
8	Bracket (black nonmetal)	/	Cd	P	/	Pass
			Pb	P	/	
			Hg	P	/	
			Cr	P	/	
			Br	P	/	
9	Plastic Shell (Black Nonmetal)	/	Cd	P	/	Pass
			Pb	P	/	
			Hg	P	/	
			Cr	P	/	
			Br	P	/	
10	Plastic Shell (Black Nonmetal)	/	Cd	P	/	Pass
			Pb	P	/	
			Hg	P	/	
			Cr	P	/	
			Br	P	/	
11	Plastic Shell (Black Nonmetal)	/	Cd	P	/	Pass
			Pb	P	/	
			Hg	P	/	
			Cr	P	/	
			Br	P	/	



Tests Conducted (As Requested By The Applicant)

12	Plastic Shell (Black Nonmetal)	/	Cd	P	/	Pass
			Pb	P	/	
			Hg	P	/	
			Cr	P	/	
			Br	P	/	
13	Spring (silver metal)	/	Cd	P	/	Pass
			Pb	P	/	
			Hg	P	/	
			Cr	P	/	
			Br	NA	/	
14	Plastic Shell (Black Nonmetal)	/	Cd	P	/	Pass
			Pb	P	/	
			Hg	P	/	
			Cr	P	/	
			Br	P	/	
15	Plastic Shell (Black Nonmetal)	/	Cd	P	/	Pass
			Pb	P	/	
			Hg	P	/	
			Cr	P	/	
			Br	P	/	
16	Tail (black nonmetal)	/	Cd	P	/	Pass
			Pb	P	/	
			Hg	P	/	
			Cr	P	/	
			Br	P	/	
17	Tail (black nonmetal)	/	Cd	P	/	Pass
			Pb	P	/	
			Hg	P	/	
			Cr	P	/	
			Br	P	/	



Tests Conducted (As Requested By The Applicant)

18	Plastic Shell (Black Nonmetal)	/	Cd	P	/	Pass
			Pb	P	/	
			Hg	P	/	
			Cr	P	/	
			Br	P	/	
19	Plastic Shell (Silver Nonmetal)	/	Cd	P	/	Pass
			Pb	P	/	
			Hg	P	/	
			Cr	P	/	
			Br	P	/	
20	Plastic Shell (Transparent Nonmetal)	/	Cd	P	/	Pass
			Pb	P	/	
			Hg	P	/	
			Cr	P	/	
			Br	P	/	
21	Plastic Shell (Transparent Nonmetal)	/	Cd	P	/	Pass
			Pb	P	/	
			Hg	P	/	
			Cr	P	/	
			Br	P	/	
22	Plastic Shell (White Nonmetal)	/	Cd	P	/	Pass
			Pb	P	/	
			Hg	P	/	
			Cr	P	/	
			Br	P	/	
23	Plastic Shell (Black Nonmetal)	/	Cd	P	/	Pass
			Pb	P	/	
			Hg	P	/	
			Cr	P	/	
			Br	P	/	

Tests Conducted (As Requested By The Applicant)

24	Decorative panels (silver nonmetal)	/	Cd	P	/	Pass
			Pb	P	/	
			Hg	P	/	
			Cr	P	/	
			Br	P	/	
25	Steering wheel button (silver nonmetal)	/	Cd	P	/	Pass
			Pb	P	/	
			Hg	P	/	
			Cr	P	/	
			Br	P	/	
26	Stickers (red nonmetal)	/	Cd	P	/	Pass
			Pb	P	/	
			Hg	P	/	
			Cr	P	/	
			Br	P	/	
27	Steering wheel cover (black nonmetal)	/	Cd	P	/	Pass
			Pb	P	/	
			Hg	P	/	
			Cr	P	/	
			Br	P	/	
28	Steering wheel lower cover (black nonmetal)	/	Cd	P	/	Pass
			Pb	P	/	
			Hg	P	/	
			Cr	P	/	
			Br	P	/	
29	Plastic Shell (Black Nonmetal)	/	Cd	P	/	Pass
			Pb	P	/	
			Hg	P	/	
			Cr	P	/	
			Br	P	/	

Tests Conducted (As Requested By The Applicant)

30	Plastic buckle (black nonmetal)	/	Cd	P	/	Pass
			Pb	P	/	
			Hg	P	/	
			Cr	P	/	
			Br	P	/	
31	Plastic buckle (black nonmetal)	/	Cd	P	/	Pass
			Pb	P	/	
			Hg	P	/	
			Cr	P	/	
			Br	P	/	
32	Seatbelt (black nonmetal)	/	Cd	P	/	Pass
			Pb	P	/	
			Hg	P	/	
			Cr	P	/	
			Br	P	/	
33	Plastic buckle (black nonmetal)	/	Cd	P	/	Pass
			Pb	P	/	
			Hg	P	/	
			Cr	P	/	
			Br	P	/	
34	Plastic Shell (Black Nonmetal)	/	Cd	P	/	Pass
			Pb	P	/	
			Hg	P	/	
			Cr	P	/	
			Br	P	/	
35	Plastic Shell (Red Nonmetal)	/	Cd	P	/	Pass
			Pb	P	/	
			Hg	P	/	
			Cr	P	/	
			Br	P	/	

Tests Conducted (As Requested By The Applicant)

36	Wheels (black nonmetal)	/	Cd	P	/	Pass
			Pb	P	/	
			Hg	P	/	
			Cr	P	/	
			Br	P	/	
37	Plastic Shell (Red Nonmetal)	/	Cd	P	/	Pass
			Pb	P	/	
			Hg	P	/	
			Cr	P	/	
			Br	P	/	
39	Plastic rack (black nonmetal)	/	Cd	P	/	Pass
			Pb	P	/	
			Hg	P	/	
			Cr	P	/	
			Br	P	/	
40	Plastic Shell (Black Nonmetal)	/	Cd	P	/	Pass
			Pb	P	/	
			Hg	P	/	
			Cr	P	/	
			Br	P	/	
41	Plastic Shell (Grey Nonmetal)	/	Cd	P	/	Pass
			Pb	P	/	
			Hg	P	/	
			Cr	P	/	
			Br	P	/	
42	Plastic Ring (White Nonmetal)	/	Cd	P	/	Pass
			Pb	P	/	
			Hg	P	/	
			Cr	P	/	
			Br	P	/	

Tests Conducted (As Requested By The Applicant)

43	Car logo (black nonmetal)	/	Cd	P	/	Pass
			Pb	P	/	
			Hg	P	/	
			Cr	P	/	
			Br	P	/	
44	Sticker (silver nonmetal)	/	Cd	P	/	Pass
			Pb	P	/	
			Hg	P	/	
			Cr	P	/	
			Br	P	/	
45	Label (black nonmetal)	/	Cd	P	/	Pass
			Pb	P	/	
			Hg	P	/	
			Cr	P	/	
			Br	P	/	
46	Base (black nonmetal)	/	Cd	P	/	Pass
			Pb	P	/	
			Hg	P	/	
			Cr	P	/	
			Br	X	PBBs=ND&PBDEs=ND	
47	Plastic Shell (Black Nonmetal)	/	Cd	P	/	Pass
			Pb	P	/	
			Hg	P	/	
			Cr	P	/	
			Br	P	/	
48	Bracket (black nonmetal)	/	Cd	P	/	Pass
			Pb	P	/	
			Hg	P	/	
			Cr	P	/	
			Br	X	PBBs=ND&PBDEs=ND	

Tests Conducted (As Requested By The Applicant)

49	Plastic Shell (Black Nonmetal)	/	Cd	P	/	Pass
			Pb	P	/	
			Hg	P	/	
			Cr	P	/	
			Br	X	PBBs=ND&PBDEs=ND	
50	Button (black nonmetal)	/	Cd	P	/	Pass
			Pb	P	/	
			Hg	P	/	
			Cr	P	/	
			Br	P	/	
51	Label sticker (silver nonmetal)	/	Cd	P	/	Pass
			Pb	P	/	
			Hg	P	/	
			Cr	P	/	
			Br	P	/	
52	Plastic Shell (Red Nonmetal)	/	Cd	P	/	Pass
			Pb	P	/	
			Hg	P	/	
			Cr	P	/	
			Br	P	/	
53	Plastic Shell (Black Nonmetal)	/	Cd	P	/	Pass
			Pb	P	/	
			Hg	P	/	
			Cr	P	/	
			Br	P	/	
54	Plastic Shell (Black Nonmetal)	/	Cd	P	/	Pass
			Pb	P	/	
			Hg	P	/	
			Cr	P	/	
			Br	P	/	



Tests Conducted (As Requested By The Applicant)

55	Label (colour nonmetal)	/	Cd	P	/	Pass
			Pb	P	/	
			Hg	P	/	
			Cr	P	/	
			Br	P	/	
56	Plastic Shell (Red Nonmetal)	/	Cd	P	/	Pass
			Pb	P	/	
			Hg	P	/	
			Cr	P	/	
			Br	P	/	
57	Plastic Shell (Black Nonmetal)	/	Cd	P	/	Pass
			Pb	P	/	
			Hg	P	/	
			Cr	P	/	
			Br	P	/	
58	Front gear (black nonmetal)	/	Cd	P	/	Pass
			Pb	P	/	
			Hg	P	/	
			Cr	P	/	
			Br	P	/	
59	Gear (white nonmetal)	/	Cd	P	/	Pass
			Pb	P	/	
			Hg	P	/	
			Cr	P	/	
			Br	P	/	
60	Gear (white nonmetal)	/	Cd	P	/	Pass
			Pb	P	/	
			Hg	P	/	
			Cr	P	/	
			Br	P	/	

Tests Conducted (As Requested By The Applicant)

61	Plastic Shell (Black Nonmetal)	/	Cd	P	/	Pass
			Pb	P	/	
			Hg	P	/	
			Cr	P	/	
			Br	P	/	
62	Lampshade (red nonmetal)	/	Cd	P	/	Pass
			Pb	P	/	
			Hg	P	/	
			Cr	P	/	
			Br	P	/	
63	Arrangement (white nonmetal)	/	Cd	P	/	Pass
			Pb	P	/	
			Hg	P	/	
			Cr	P	/	
			Br	P	/	
64	Arrangement (black nonmetal)	/	Cd	P	/	Pass
			Pb	P	/	
			Hg	P	/	
			Cr	P	/	
			Br	X	PBBs=ND&PBDEs=ND	
65	Line skin (green nonmetal)	/	Cd	P	/	Pass
			Pb	P	/	
			Hg	P	/	
			Cr	P	/	
			Br	P	/	
66	Line Skin (Blue Nonmetal)	/	Cd	X	Cd=ND	Pass
			Pb	P	/	
			Hg	P	/	
			Cr	P	/	
			Br	P	/	

Tests Conducted (As Requested By The Applicant)

67	Linen (white nonmetal)	/	Cd	P	/	Pass
			Pb	P	/	
			Hg	P	/	
			Cr	P	/	
			Br	P	/	
68	Linen (orange nonmetal)	/	Cd	P	/	Pass
			Pb	P	/	
			Hg	P	/	
			Cr	P	/	
			Br	P	/	
69	Linen (yellow nonmetal)	/	Cd	P	/	Pass
			Pb	P	/	
			Hg	P	/	
			Cr	P	/	
			Br	P	/	
70	Linen (yellow nonmetal)	/	Cd	P	/	Pass
			Pb	P	/	
			Hg	P	/	
			Cr	P	/	
			Br	P	/	
71	Linen (red nonmetal)	/	Cd	P	/	Pass
			Pb	P	/	
			Hg	P	/	
			Cr	P	/	
			Br	P	/	
72	Linen (black nonmetal)	/	Cd	P	/	Pass
			Pb	P	/	
			Hg	P	/	
			Cr	P	/	
			Br	P	/	

Tests Conducted (As Requested By The Applicant)

73	Linen (brown nonmetal)	/	Cd	P	/	Pass
			Pb	P	/	
			Hg	P	/	
			Cr	P	/	
			Br	P	/	
74	Core (yellow metal)	/	Cd	P	/	Pass
			Pb	P	/	
			Hg	P	/	
			Cr	P	/	
			Br	NA	/	
75	Battery Cover (White Nonmetal)	/	Cd	P	/	Pass
			Pb	P	/	
			Hg	P	/	
			Cr	P	/	
			Br	P	/	
76	Button (black nonmetal)	/	Cd	P	/	Pass
			Pb	P	/	
			Hg	P	/	
			Cr	P	/	
			Br	X	PBBs=ND&PBDEs=ND	
77	Plastic block (brown nonmetal)	/	Cd	P	/	Pass
			Pb	P	/	
			Hg	P	/	
			Cr	P	/	
			Br	P	/	
78	Top cover (white nonmetal)	/	Cd	P	/	Pass
			Pb	P	/	
			Hg	P	/	
			Cr	P	/	
			Br	P	/	

Tests Conducted (As Requested By The Applicant)

79	Undercover (white nonmetal)	/	Cd	P	/	Pass
			Pb	P	/	
			Hg	P	/	
			Cr	P	/	
			Br	P	/	
80-3	Glue (gray nonmetal)	/	Cd	P	/	Pass
			Pb	P	/	
			Hg	P	/	
			Cr	P	/	
			Br	P	/	
80-4	Resistor (black nonmetal)	/	Cd	P	/	Pass
			Pb	P	/	
			Hg	P	/	
			Cr	P	/	
			Br	P	/	
81-1	Handle (black metal)	/	Cd	P	/	Pass
			Pb	P	/	
			Hg	P	/	
			Cr	P	/	
			Br	NA	/	
81-2	Metal Shaft (Silver Metal)	/	Cd	P	/	Pass
			Pb	P	/	
			Hg	P	/	
			Cr	P	/	
			Br	NA	/	
82-1	Jinzhen (Silver Metal)	/	Cd	P	/	Pass
			Pb	P	/	
			Hg	P	/	
			Cr	P	/	
			Br	NA	/	



Tests Conducted (As Requested By The Applicant)

82-2	SW1 (black nonmetal)	/	Cd	P	/	Pass
			Pb	P	/	
			Hg	P	/	
			Cr	P	/	
			Br	P	/	
82-3	Metal sheet (silver metal)	/	Cd	P	/	Pass
			Pb	P	/	
			Hg	P	/	
			Cr	P	/	
			Br	NA	/	
82-4	Metal sheet (silver metal)	/	Cd	P	/	Pass
			Pb	P	/	
			Hg	P	/	
			Cr	P	/	
			Br	NA	/	
82-5	U1 (black nonmetal)	/	Cd	P	/	Pass
			Pb	P	/	
			Hg	P	/	
			Cr	P	/	
			Br	P	/	
82-6	U2 (black nonmetal)	/	Cd	P	/	Pass
			Pb	P	/	
			Hg	P	/	
			Cr	P	/	
			Br	P	/	
82-7	LED (white nonmetal)	/	Cd	P	/	Pass
			Pb	P	/	
			Hg	P	/	
			Cr	P	/	
			Br	P	/	



Tests Conducted (As Requested By The Applicant)

82-8	Capacitance (black nonmetal)	/	Cd	P	/	Pass
			Pb	P	/	
			Hg	P	/	
			Cr	P	/	
			Br	P	/	
82-10	Soldering tin (silver metal)	/	Cd	P	/	Pass
			Pb	P	/	
			Hg	P	/	
			Cr	P	/	
			Br	NA	/	
82-11	Copper sheet (yellow metal)	/	Cd	P	/	Pass
			Pb	P	/	
			Hg	P	/	
			Cr	P	/	
			Br	NA	/	
82-12	PCB (Green Nonmetal)	/	Cd	P	/	Pass
			Pb	P	/	
			Hg	P	/	
			Cr	P	/	
			Br	P	/	
83	Metal cap (silver metal)	/	Cd	P	/	Pass
			Pb	P	/	
			Hg	P	/	
			Cr	P	/	
			Br	NA	/	
84	Screw (silver metal)	/	Cd	P	/	Pass
			Pb	P	/	
			Hg	P	/	
			Cr	P	/	
			Br	NA	/	

Remark:

Detected = Below the lower screening limit of table (B) and pass

ND = Not detected



Tests Conducted (As Requested By The Applicant)

Negative = The Cr (VI) concentration is less than 0.10 µg/cm². The sample is negative for Cr (VI).

(B1) XRF Screening Limits in mg/kg for Regulated Elements in Various Matrices.

Element	Polymer materials	Metallic materials	Composite materials
Cd	$P \leq 70 < X < 130 \leq F$	$P \leq 70 < X < 130 \leq F$	$P \leq 70 < X < 150 \leq F$
Pb	$P \leq 700 < X < 1300 \leq F$	$P \leq 700 < X < 1300 \leq F$	$P \leq 500 < X < 1500 \leq F$
Hg	$P \leq 700 < X < 1300 \leq F$	$P \leq 700 < X < 1300 \leq F$	$P \leq 500 < X < 1500 \leq F$
Cr	$P \leq 700 < X$	$P \leq 700 < X$	$P \leq 500 < X$
Br	$P \leq 300 < X$	Not applicable	$P \leq 250 < X$

(B2) Preliminary screening test will be used for phthalates, if the results exceed the warning area in the following table, further chemical methods will be conducted to confirm the exact content by GC/MS.

Phthalates	Polymer
Bis(2-ethylhexyl)phthalate(DEHP)	$BL \leq 600 < X$
Butyl benzyl phthalate(BBP)	$BL \leq 600 < X$
Dibutyl phthalate(DBP)	$BL \leq 600 < X$
Diisobutyl phthalate(DIBP)	$BL \leq 600 < X$

(C) Estimated detection limits in mg/kg for regulated elements in various matrices.

Element	Polymer materials	Metallic materials	Composite materials
Cd	50	70	70
Pb	100	200	200
Hg	100	200	200
Cr	100	200	200
Br	200	Not applicable	200

Tests Conducted (As Requested By The Applicant)

Disclaimers:

This XRF Screening and Chemical Confirmation Test Report is for reference purposes only. The applicant shall make its/his/her own judgment as to whether the information provided in this XRF Screening and Chemical Confirmation Test Report is sufficient for its/his/her purposes.

The results shown in this XRF Screening and Chemical Confirmation Test Report will differ based on various factors, including but not limited to, the sample size, thickness, area, surface flatness, equipment parameters and matrix effect (e.g. plastic, rubber, metal, glass, ceramic etc.). Further wet chemical pre-treatment with relevant chemical equipment analysis is required to obtain quantitative data.

(D) Chemical confirmation test methods:

Testing Item	Testing Method	Reporting Limit
Cadmium (Cd) Content	With reference to IEC 62321-5 Edition 1.0: 2013, by acid digestion and determined by ICP - OES	2 mg/kg
Lead (Pb) Content	With reference to IEC 62321-5 Edition 1.0: 2013, by acid digestion and determined by ICP - OES	2 mg/kg
Mercury (Hg) Content	With reference to IEC 62321-4:2013+A1:2017, by acid digestion and determined by ICP - OES	2 mg/kg
Chromium (VI) (Cr ⁶⁺) content (for non-metal)	With reference to IEC 62321-7-2 Edition 1.0: 2017, by organic solvent dissolution or swell the sample matrix, followed by alkaline digestion and determined by UV-VIS Spectrophotometer.	10mg/kg
Chromium (VI) (Cr ⁶⁺) content (for metal)	With reference to IEC 62321-7-1 Edition 1.0: 2015, by boiling water extraction and determined by UV-VIS Spectrophotometer.	Positive(>0.13g/m ²)/ Negative(<0.10g/m ²) Inconclusive(0.10--0.13 g/m ²)
Polybrominated Biphenyls (PBBs) & Polybrominated Diphenyl Ethers (PBDEs) Content	With reference to IEC 62321-6 edition 1.0:2015, by solvent extraction and determined by GC/MS and further HPLC confirmation when necessary	5 mg/kg
Phthalates(DEHP,BBP,DBP,DIBP) Content	With reference to IEC62321-8 : 2017, by solvent extraction and determined by GC/MS	100mg/kg



Tests Conducted (As Requested By The Applicant)

(E) RoHS requirement

Restricted substances	Limits
Cadmium (Cd)	0.01% (100 ppm)
Lead (Pb)	0.1% (1000 ppm)
Mercury (Hg)	0.1% (1000 ppm)
Chromium (VI) (Cr ⁶⁺)	0.1% (1000 ppm)
Polybrominated biphenyls (PBBs)	0.1% (1000 ppm)
Polybrominated diphenyl ethers (PBDEs)	0.1% (1000 ppm)
Phthalates(DEHP, BBP, DBP, DIBP)	0.1% (1000 ppm)

The above limits were quoted from 2011/65/EU and (EU) 2015/863 for homogeneous material.

Date Sample Received: Apr 30, 2019

Testing Period: Apr 30, 2019 To May 21, 2019



Tests Conducted (As Requested By The Applicant)

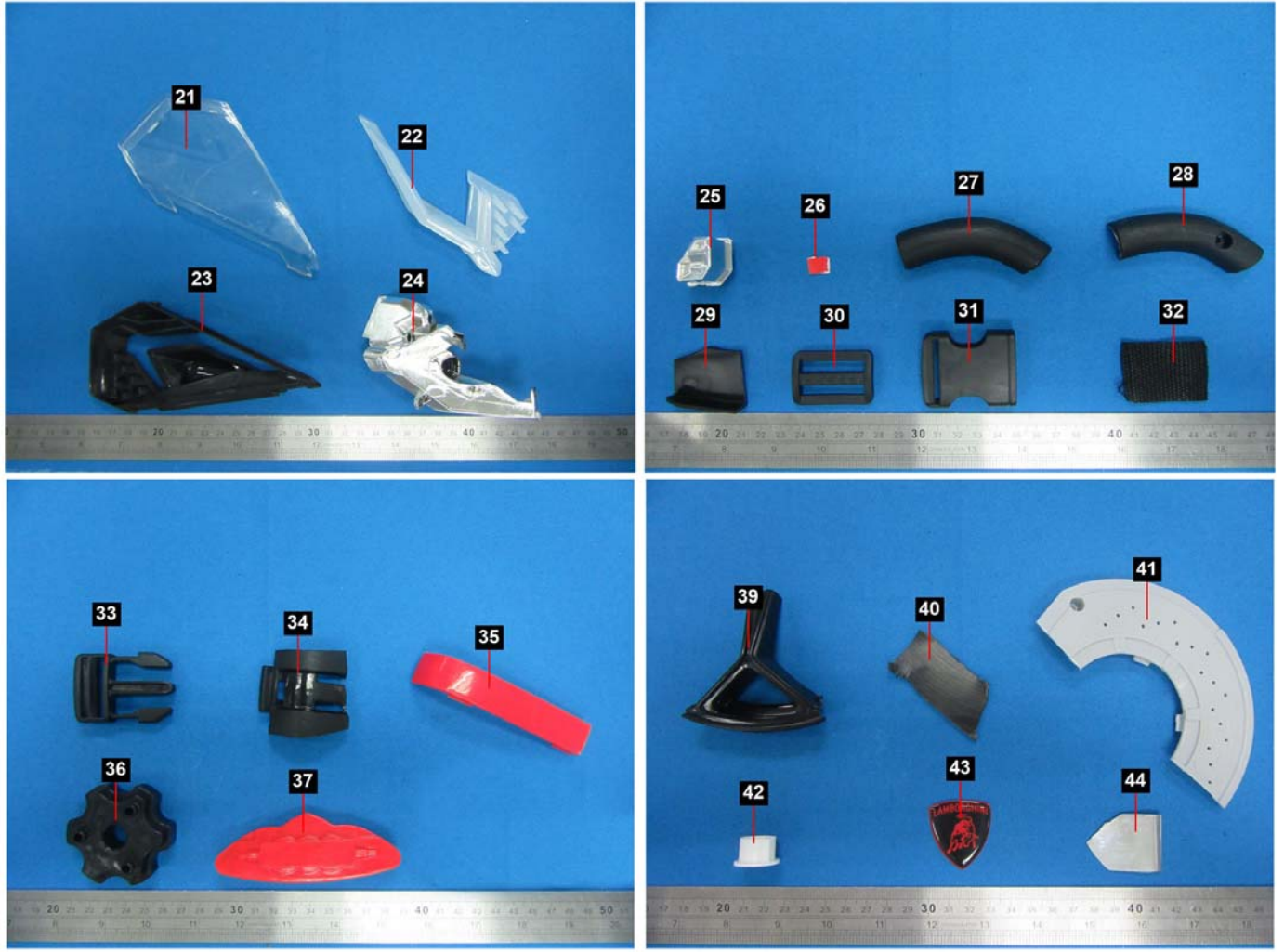
Photo



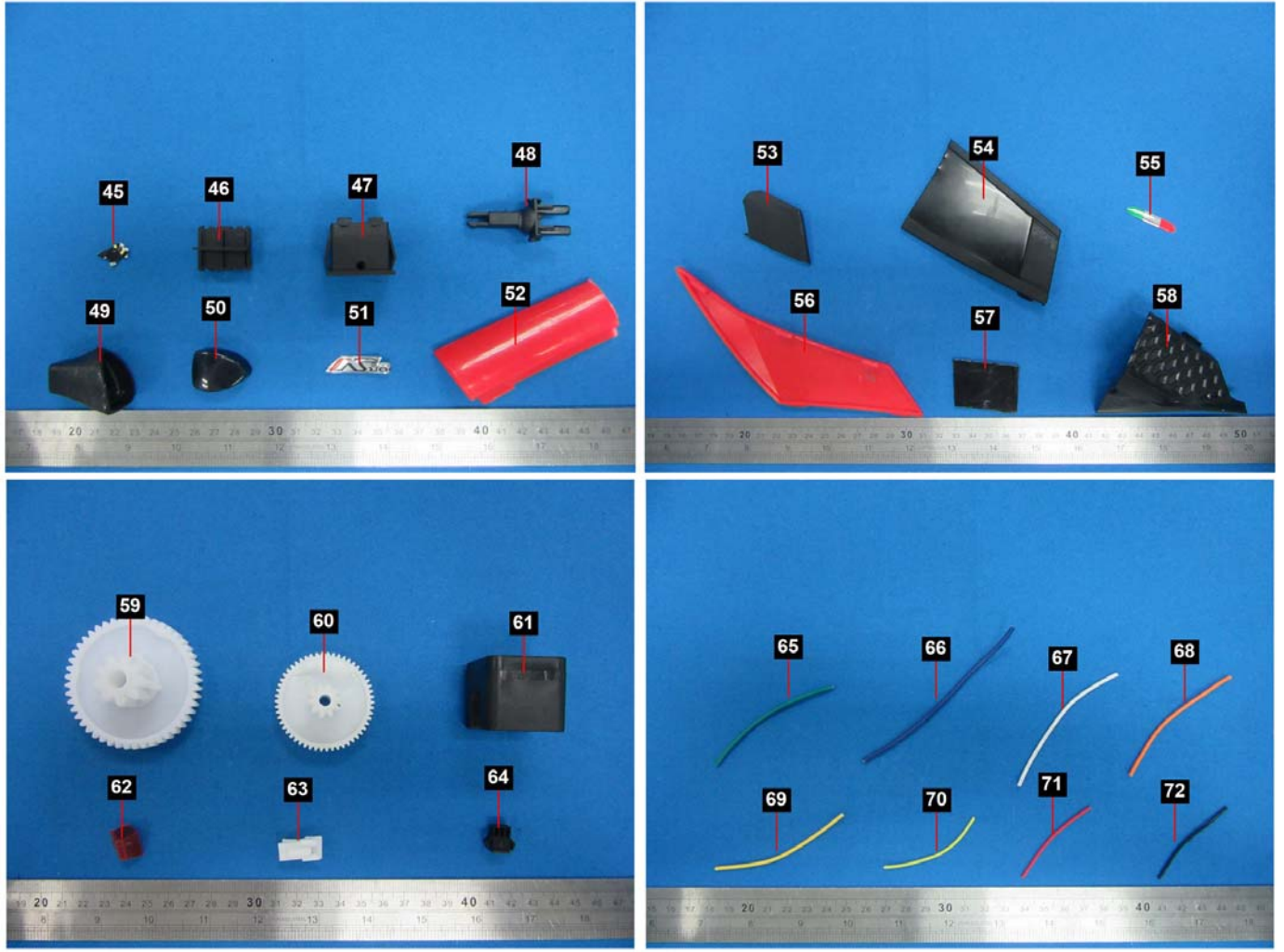
Tests Conducted (As Requested By The Applicant)



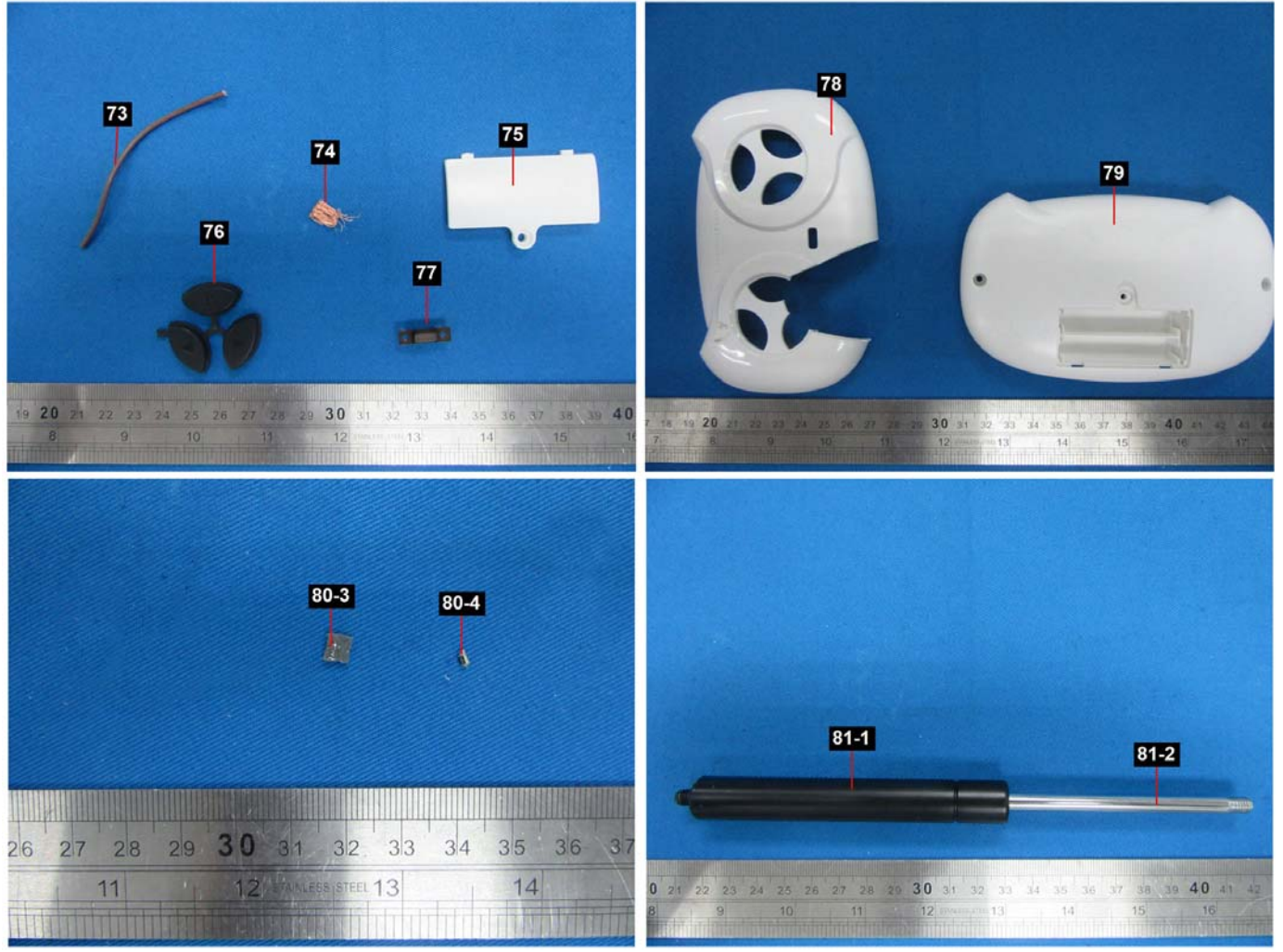
Tests Conducted (As Requested By The Applicant)



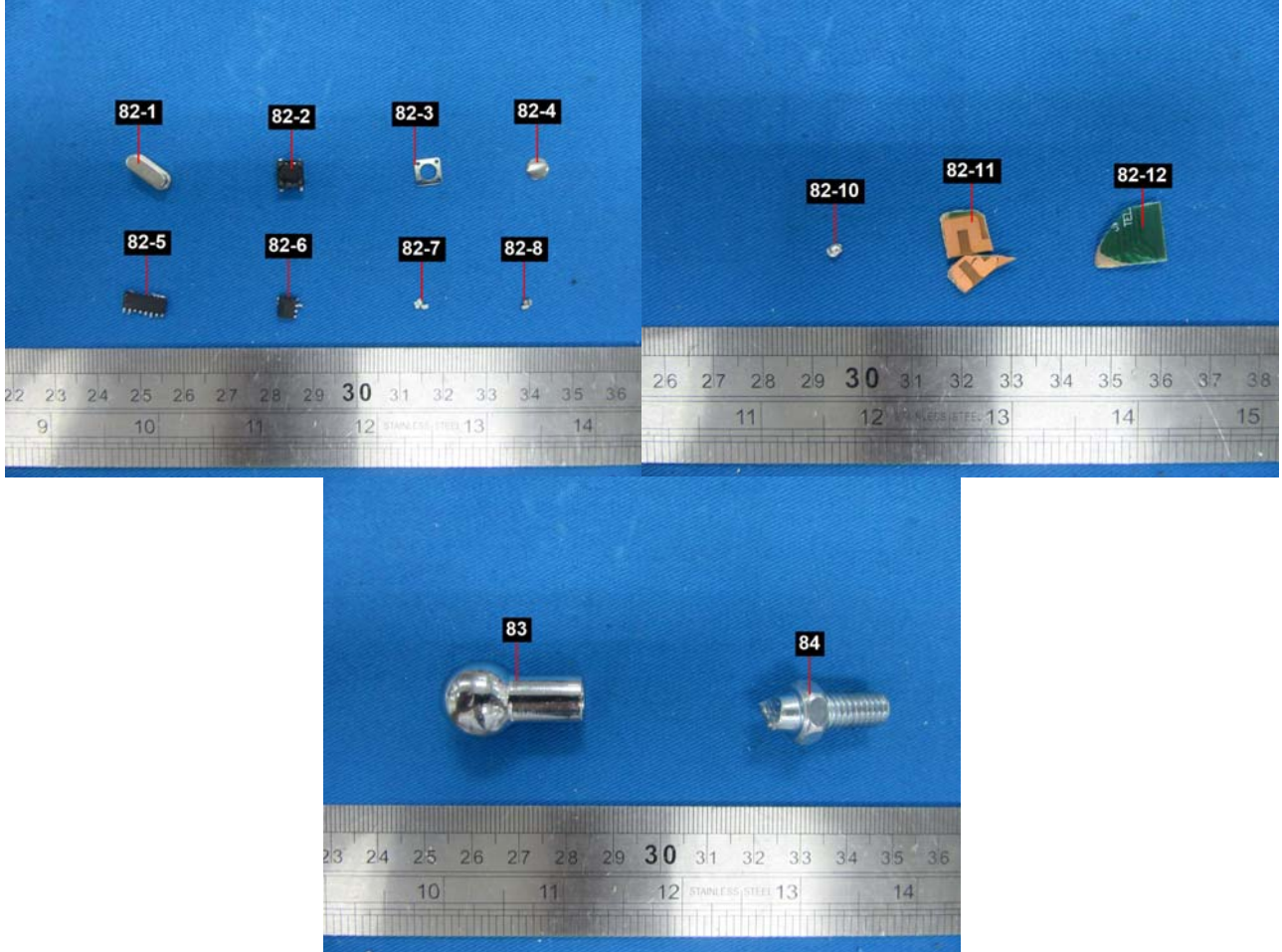
Tests Conducted (As Requested By The Applicant)



Tests Conducted (As Requested By The Applicant)



Tests Conducted (As Requested By The Applicant)



End of Report

This report is made solely on the basis of your instructions and/or information and materials supplied by you. It is not intended to be a recommendation for any particular course of action. Intertek does not accept a duty of care or any other responsibility to any person other than the Client in respect of this report and only accepts liability to the Client insofar as is expressly contained in the terms and conditions governing Intertek's provision of services to you. Intertek makes no warranties or representations either express or implied with respect to this report save as provided for in those terms and conditions. We have aimed to conduct the Review on a diligent and careful basis and we do not accept any liability to you for any loss arising out of or in connection with this report, in contract, tort, by statute or otherwise, except in the event of our gross negligence or wilful misconduct.

This report shall not be reproduced except in full, without written approval of the laboratory

