

CHILDREN'S KARTING



WARNING

Must be assembled by an adult.

- Suitable for 3+ Years
- Maximum user weight: 30 kg

OWNERS MANUAL

with Assembly Instructions

Read and understand this entire manual before using!

Please keep this manual for future reference as it contains important information.

On the purchase of your new karting

This bicycle will provide your child with many miles of riding of enjoyment. To help assure you and your rider a safe ride we ask you to please read this manual carefully, and keep it for future reference.

Follow the recommendations in this manual, they are designed to improve the safety and operation of your bicycle car and its rider.

"Mercedes-Benz",  ,  and the design of the enclosed product are subject to intellectual property protection owned by Daimler AG. They are used by Pinghu City Xiao Ming Xing Children's Products Co., Ltd. under license.

Specification

Suitable age:	3+ Years
Load capacity:	Under 30 kg
Size of car:	1115 × 570 × 610 mm



BATTERY INFORMATION

- Non-rechargeable batteries are not to be recharged.
- Rechargeable batteries are to be removed from the toy before being charged.
- Rechargeable batteries are only to be charged under adult supervision.
- Different types of batteries or new and used batteries are not to be mixed.
- Batteries are to be inserted with the correct polarity.
- Exhausted batteries are to be removed from the toy.
- The supply terminals are not to be short-circuited.



PREVENT INJURIES AND DEATHS:

- **NEVER LEAVE CHILD UNATTENDED. ADULT DIRECT SUPERVISION IS REQUIRED.** Always keep child in view when child is in vehicle.
- This toy should be used with caution since skill is required to avoid falls or collisions causing injury to the user or third parties.
- Protective equipment should be worn.
- Never use in roadways, near cars, or on near steep inclines or steps, swimming pools or other bodies of water.
- Always wear shoes, always sit on the seat.
- Not to be used in traffic.
- This toy is unsuitable for children under 36 months due to its maximum speed; Maximum user weight is 30 kg.
- Never allow more than 1 rider.



WARNING:

- **CHOKING HAZARD!** Not suitable for children under 36 months.
- **Must be assembled by an adult.**

Rules for Safe Riding

- Keep Children within Safe Riding Areas:
 - Never use in roadway, near motor vehicles, on lawn space, on or near steep inclines or steps, swimming pools or other bodies of water;
- Use the toy only on flat surfaces. Such as inside your house, garden or playground.
- Never use in the dark. A child could encounter unexpected obstacles and have an accident. Operate the vehicle only in the daytime or a well-lit area.
- It is prohibited to change the circuit or add other electric parts
- Inspect wires and connections of the vehicle periodically.
- Do not let any child touch the wheels or be near them when the car is moving .
- This vehicle has adjustable play seat belts. Please instruct children how to tie the safety belt before using, guarantee the security.

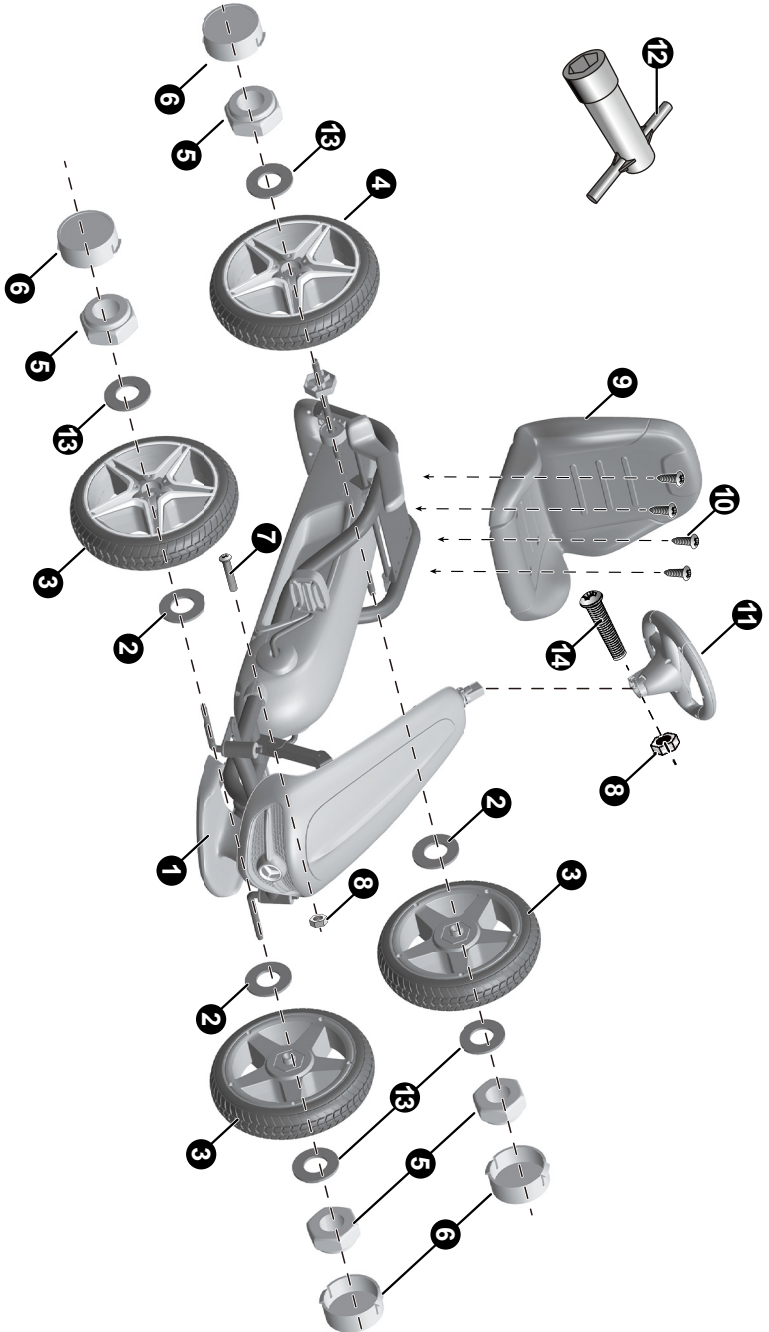
NO.	PART NAME	Q'TY (PCS)		REMARK
1	Vehicle body	1		
2	Ø12 washer	3		
3	Normal wheel	3		
4	Driving wheel	1		
5	Lock nut	4		
6	Hub cap	4		
7	M5X33 screw	1		
8	Ø5 nut	2		
9	Seat	1		
10	Ø5x35 screw	4		
11	Steering wheel	1		
12	Spanner	1		
13	Ø10 washer	4		
14	M5X30 machine screw	1		

Tools required (not included):

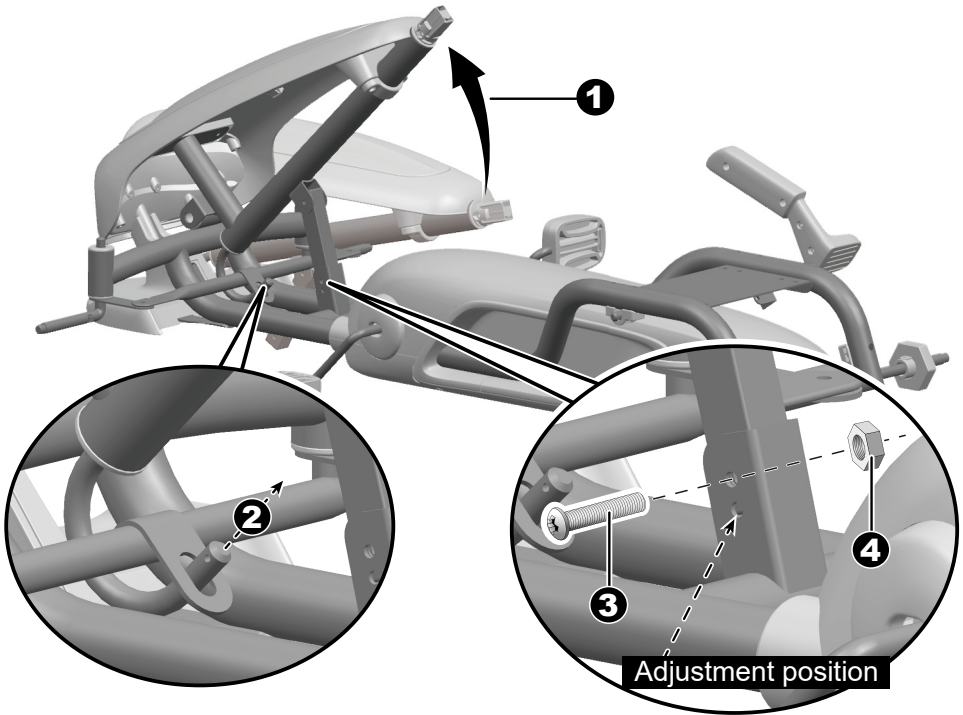


Parts Diagram

D



Unfold the Front Protection Cover

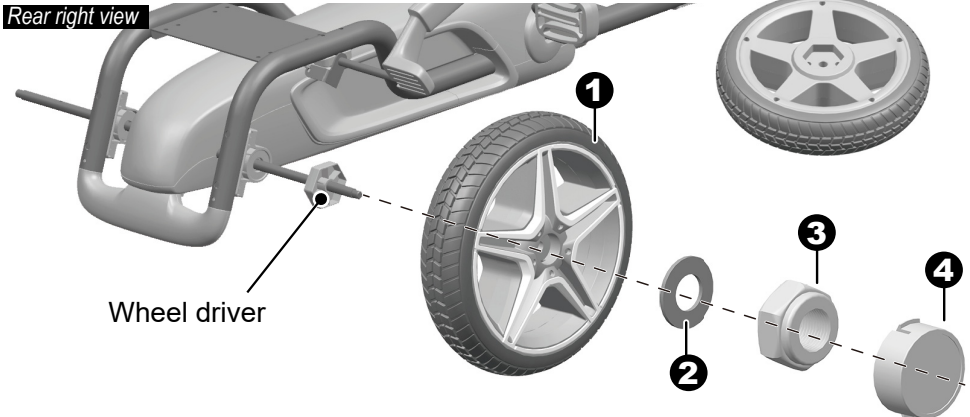


HINT: The front protection cover is adjustable and has two positions. You may move the front protection cover up as your child grows.

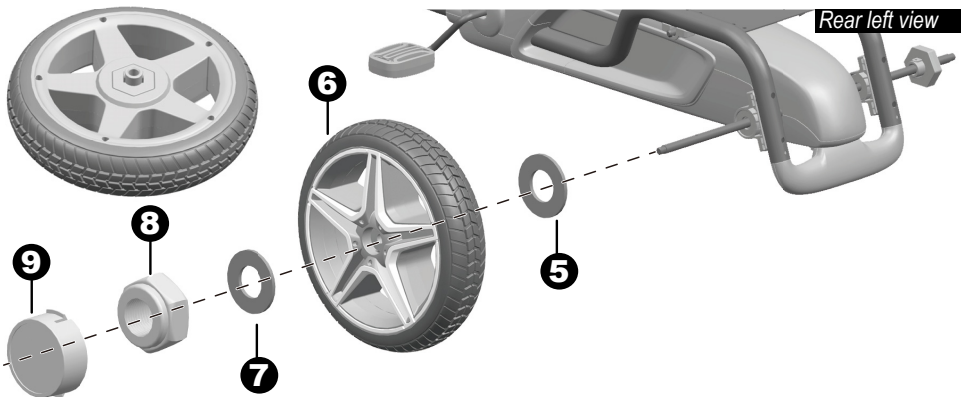
1. Lift up the front protection cover on the vehicle body and turn to the end.
2. Make sure the bent end of the steering column passes through the hole on the front axle linkage.
3. Align the holes on the front protection cover with the holes on the vehicle body. Insert the M5x33 machine screw.
4. Fasten a nut on the opposite end of the screw.

Attach the Rear Wheels

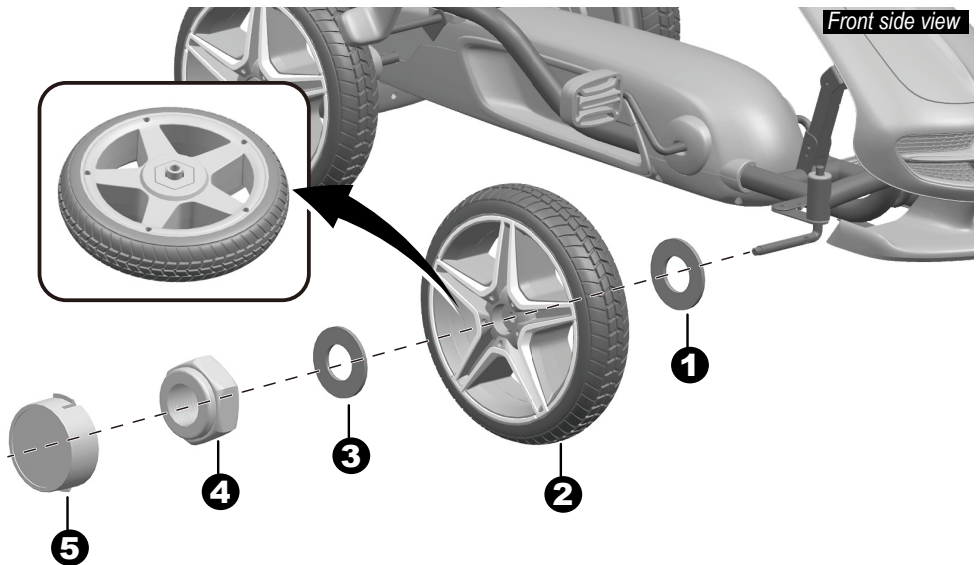
E



1. Slide the driving wheel onto the rear axle. Make sure the driving wheel match up with wheel driver on the rear axle.
2. Slide a $\text{\O}10$ washer on to the rear axle.
3. Tighten a lock nut to the end of the rear axle with a spanner.
4. "Snap" the hub cap to the wheel.



5. Slide a $\text{\O}12$ washer on to the rear axle.
6. Slide the normal wheel onto the rear axle.
7. Slide a $\text{\O}10$ washer on to the rear axle.
8. Tighten a lock nut to the end of the rear axle with a spanner.
9. "Snap" the hub cap to the wheel.

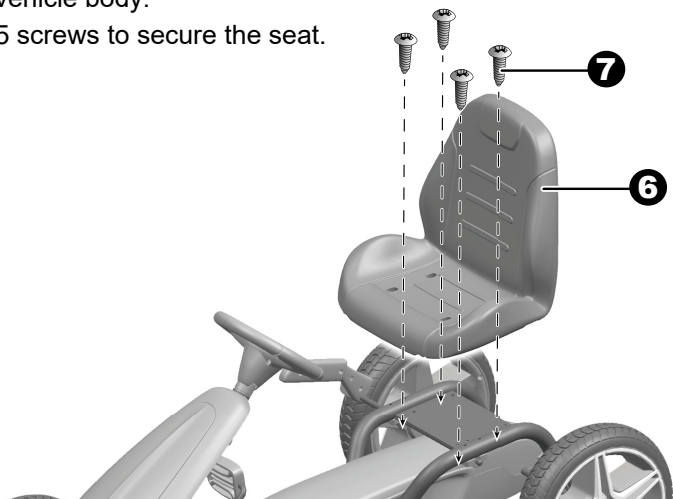
E**Attach the Front Wheels & Seat**

1. Slide a $\varnothing 12$ washer on to the rear axle.
2. Slide the normal wheel onto the rear axle.
3. Slide a $\varnothing 10$ washer on to the rear axle.
4. Tighten a lock nut to the end of the rear axle with a spanner.
5. “Snap” the hub cap to the wheel.

Repeat for the other front wheel.

6. Fit the seat to the vehicle body.

7. Tighten four $\varnothing 5 \times 35$ screws to secure the seat.

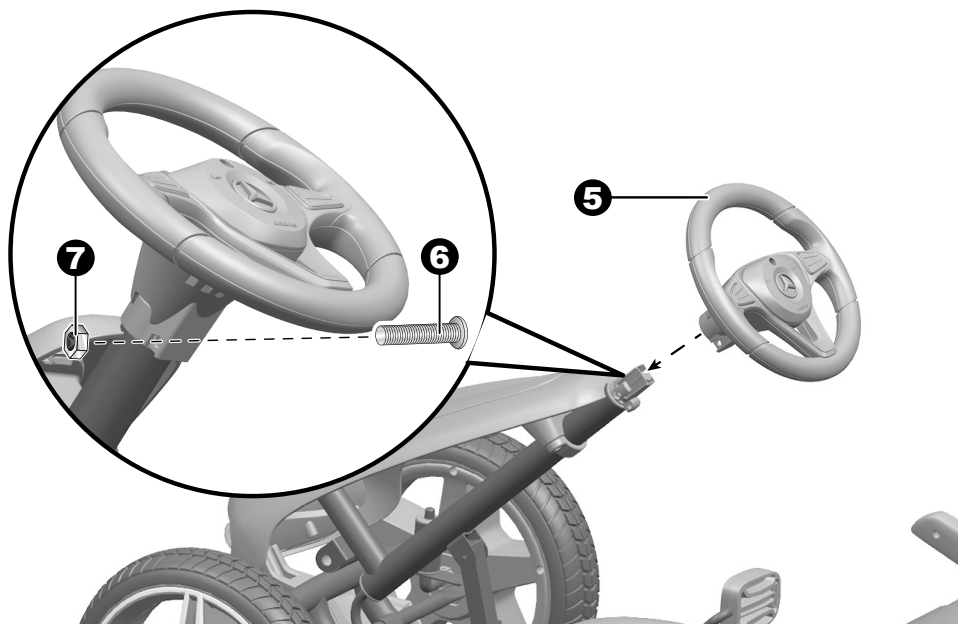
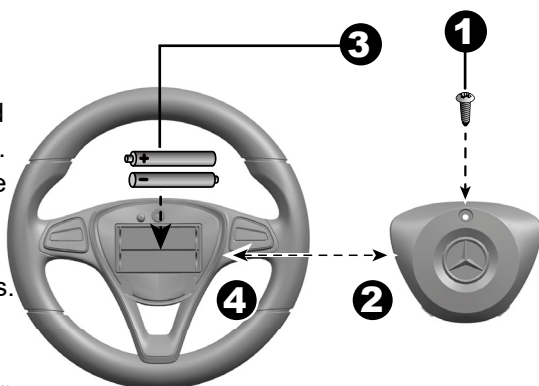


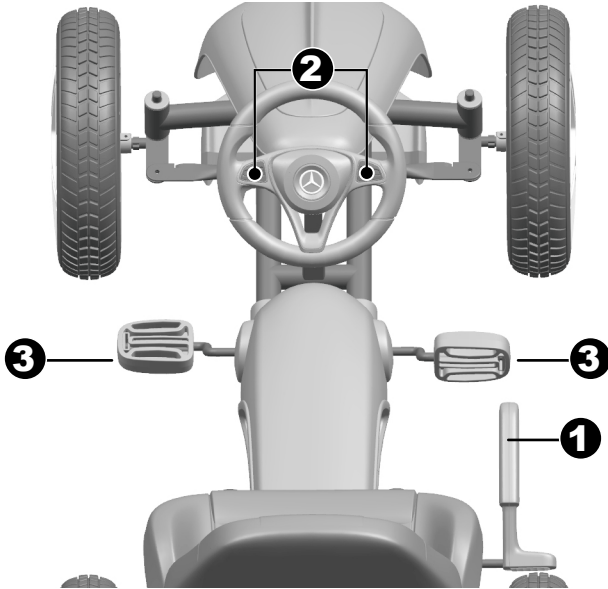
Attach the Steering Wheel.

E

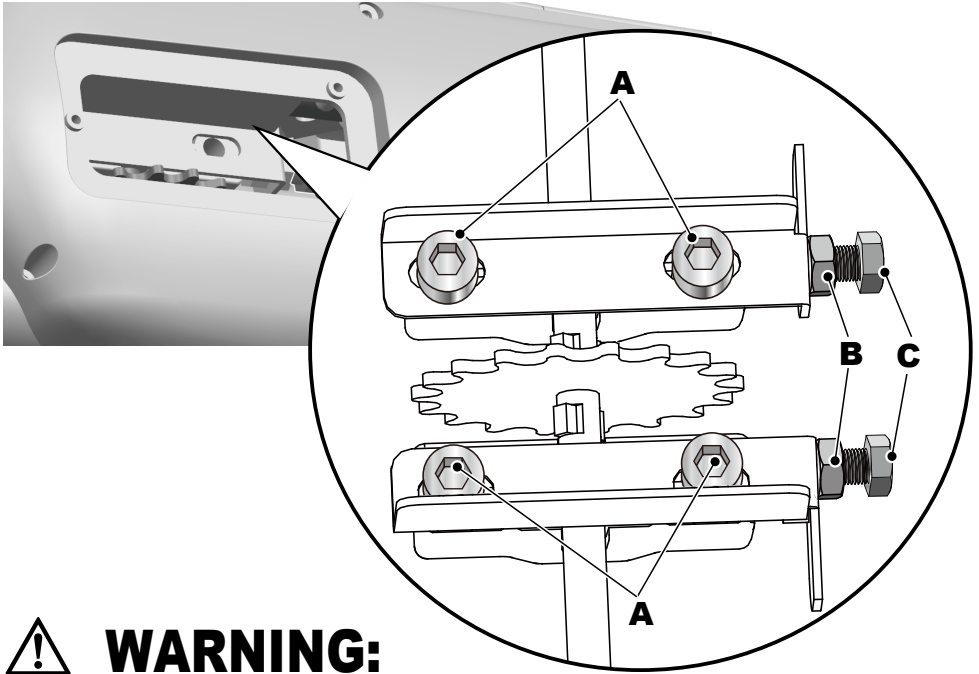
Refer to the battery information on page 1

1. With a screwdriver remove the screw on the battery cover located in the center of the steering wheel.
2. Remove the battery cover from the top of the battery compartment.
3. Insert 2x1.5 AA batteries (**not included**) in their correct polarities.
4. Place the battery cover over the battery compartment and fasten with the screw you removed in step one.
5. Place the steering wheel over the the steering column, protruding from the middle of the steering wheel base.
6. Align the holes on each side of steering wheel with the holes at the end of the steering column.
7. Fasten a nut on the opposite end of the M5X30 screw to secure the steering wheel to the steering column.





1. **Barke:** press to slow or brake down the vehicle.
2. **Sound buttons:** press for horn/sound playing.
3. **Pedals:** to move the vehicle forward and reverse.

**WARNING:**

Do not attempt chain repairs. If there is a problem with the chain, have a bicycle service shop make any repairs.

The chain must be at the correct tightness. If too tight, the bicycle will be difficult to pedal. If too loose, the chain can come off the sprockets.

When the chain is at the correct tightness, you can rotate the crank freely and you can pull it no more than one-half inch away from a straightedge as shown.

Adjust the tightness of the chain as follows:

- Remove the screws on the cover in the middle of the bottom of the product with a screwdriver.
- A. Using a hex wrench to loose the screw.
- B. Using a spanner to loose the nut.
- C. Using a spanner to tight and loose the adjustment nut.

E

Maintaining

- Make sure the plastic parts of the vehicle are not cracked or broken.
- Occasionally use a lightweight oil to lubricate moving parts such as wheels.
- Park the vehicle indoors or cover it with a tarp to protect it from wet weather.
- Keep the vehicle away from sources of heat, such as stoves and heaters. Plastic parts may melt.
- Do not wash the vehicle with a hose. Do not wash the vehicle with soap and water. Do not drive the vehicle in rainy or snowy weather.
- Clean the vehicle with a soft, dry cloth. To restore shine to plastic parts, use a non-wax furniture polish. Do not use car wax. Do not use abrasive cleaners.

E

Disposal Of Battery



- Your sealed lead-acid battery must be recycled or disposed of in an environmentally sound manner.
- Do not dispose of your lead-acid battery in a fire. The battery may explode or leak.
- Do not dispose of a lead-acid battery in your regular, household trash. The incineration, land filling or mixing of sealed lead-acid batteries with household trash is prohibited by law.