

Test Report No.: CZHL2206005319TY **Date:** AUG. 09, 2022 Page 1 of 44
 CHUZHOU BETTYMA BABY CARRIER CO., LTD.
 SHITAN MODERN INDUSTRIAL PARK ,QUANJIAO,CHUZHOU,ANHUI,CHINA

The following sample(s) was/were submitted and identified by/on behalf of the client as:

Sample Description : BATTERY-POWERED RIDE-ON CHILDREN'S CARS/RIDE ON VEHICLE
 Sample Quantity : 2 PC(S)
 Style No. : BDM-0923
 Item No. : BDM-0923
 Labeled Age Grading : 37-96 MONTHS
 Requested Age Grading : 37-96 MONTHS

 Age Group Assessed As Per : 37-96 MONTHS
 Age Guideline
 Age Group Applied in Testing : 37-96 MONTHS
 Sample Receiving Date : JUN. 17, 2022
 Testing Period : JUN. 17, 2022 TO AUG. 09, 2022
 Further Information Date : AUG. 08, 2022
 Testing Performed : Follow selected test(s) as requested by client.

| | Test Requirement | Conclusion |
|---|--|------------|
| 1 | Standard Consumer Safety Specification For Toy Safety (ASTM F963-17) | Pass |
| 2 | Public Act 097-0612 of the US State of Illinois, the Lead Poisoning Prevention Act-Lead Content in paint/similar surface coating material | Pass |
| 3 | Part 1303, Title 16, Code of Federal Regulations, Chapter II – Consumer Products Safety Commission of U.S.A. requirement-Lead | Pass |
| 4 | CPSIA section 101(f)-Lead in paint/similar surface coating material | Pass |
| 5 | CPSIA section 101(a)(2)-Lead in accessible substrate materials (Non-Metal) | Pass |
| 6 | CONSUMER PRODUCT SAFETY COMMISSION---16 CFR Part 1307 [Docket No. CPSC–2014–0033], Final Rule, amending CPSIA section 108, Prohibition on Sale of Certain Products Containing Specified Phthalates | Pass |
| 7 | US California Proposition 65-Lead content | Pass |
| 8 | US California Proposition 65- Cadmium content | Pass |



Unless otherwise agreed in writing, this document is issued by the Company subject to its General Conditions of Service printed overleaf, available on request or accessible at <http://www.sgs.com/en/Terms-and-Conditions.aspx> and, for electronic format documents, subject to Terms and Conditions for Electronic Documents at <http://www.sgs.com/en/Terms-and-Conditions/Terms-e-Documents.aspx>. Attention is drawn to the limitation of liability, indemnification and jurisdiction issues defined therein. Any holder of this document is advised that information contained hereon reflects the Company's findings at the time of its intervention only and within the limits of Client's instructions, if any. The Company's sole responsibility is to its Client and this document does not exonerate parties to a transaction from exercising all their rights and obligations under the transaction documents. This document cannot be reproduced except in full, without prior written approval of the Company. Any unauthorized alteration, forgery or falsification of the content or appearance of this document is unlawful and offenders may be prosecuted to the fullest extent of the law. Unless otherwise stated the results shown in this test report refer only to the sample(s) tested and such sample(s) are retained for 30 days only.
Attention: To check the authenticity of testing /inspection report & certificate, please contact us at telephone: (86-755) 8307 1443, or email: CN.Doccheck@sgs.com

SGS-CSTC Standards Technical Services (Changzhou) Co., Ltd.
 Hardlines

Building 30, No. 47, Qingyang North Road, Tianning District, Changzhou, China 213017 t (86-519)85587753
 中国·常州·天宁区青洋北路47号30号楼 邮编: 213017 t (86-519)85587753

[www.sgs.com.cn](http://www.sgs.com)
sgs.china@sgs.com

| | Test Requirement | Conclusion |
|----|---|-----------------------|
| 9 | US California Proposition 65- Phthalate | Pass |
| 10 | Physical And Mechanical Tests, And Labeling Consisting US CPSC 16 CFR 1500.48, 16 CFR 1500.49, 16 CFR 1501, 16 CFR 1500.51-53 And 16 CFR 1500.19: <ul style="list-style-type: none"> - US CPSC 16 CFR 1500.48 – Technical Requirements For Determining A Sharp Point In Toys And Other Articles Intended For Use By Children Under 8 Years Of Ages - US CPSC 16 CFR 1500.49 – Technical Requirements For Determining A Sharp Metal Or Glass Edge In Toys And Other Articles Intended For Use By Children Under 8 Years Of Age - US CPSC 16 CFR 1501 – Method For Identifying Toys And Other Articles Intended For Use By Children Under 3 Years Of Age Which Present Choking, Aspiration, Or Ingestion Hazards Because Of Small Parts US CPSC 16 CFR 1500.19 – Misbranded Toys And Other Articles Intended For Use By Children | Pass |
| 11 | US CPSC 16 CFR 1500.44 – Method for determining extremely flammable and flammable solids | Pass |
| 12 | Tracking label per Consumer Product Safety Improvement Act (CPSIA) of 2008 section 103 tracking labels for children’s products. | Meet (See Note 1 & 2) |

*** FOR FURTHER DETAILS, PLEASE REFER TO THE FOLLOWING PAGE(S) ***



Berix Li
Authorized Signatory



Land Jiang
Authorized Signatory



Unless otherwise agreed in writing, this document is issued by the Company subject to its General Conditions of Service printed overleaf, available on request or accessible at <http://www.sgs.com/en/Terms-and-Conditions.aspx> and, for electronic format documents, subject to Terms and Conditions for Electronic Documents at <http://www.sgs.com/en/Terms-and-Conditions/Terms-e-Documents.aspx>. Attention is drawn to the limitation of liability, indemnification and jurisdiction issues defined therein. Any holder of this document is advised that information contained hereon reflects the Company's findings at the time of its intervention only and within the limits of Client's instructions, if any. The Company's sole responsibility is to its Client and this document does not exonerate parties to a transaction from exercising all their rights and obligations under the transaction documents. This document cannot be reproduced except in full, without prior written approval of the Company. Any unauthorized alteration, forgery or falsification of the content or appearance of this document is unlawful and offenders may be prosecuted to the fullest extent of the law. Unless otherwise stated the results shown in this test report refer only to the sample(s) tested and such sample(s) are retained for 30 days only.
Attention: To check the authenticity of testing/inspection report & certificate, please contact us at telephone: (86-755) 8307 1443, or email: CN.Doccheck@sgs.com

SGS-CSTC Shanghai Technical Services (Changzhou) Co., Ltd.
Hardlines

Building 30, No. 47, Qingyang North Road, Tianning District, Changzhou, China 213017 t (86-519)85587753
 中国·常州·天宁区青洋北路47号30号楼 邮编: 213017 t (86-519)85587753

www.sgs.com
sgs.china@sgs.com

Test Results:

1. Standard Consumer Safety Specification For Toy Safety (ASTM F963-17)

| Clause | Test Description | Result |
|------------------------------|--|-------------------|
| 4 Safety Requirements | | |
| 4.1 | Material Quality | Pass |
| | Visual Examination. | |
| 4.2 | Flammability On Solid | Pass(See Details) |
| 4.3 Toxicology | | |
| 4.3.1 | Hazardous Substances | N/A |
| 4.3.2 | Manufacturing and Packaging of Food | N/A |
| 4.3.3 | Indirect Food Additives | N/A |
| 4.3.4 | Cosmetics | N/A |
| 4.3.5 Heavy Elements | | |
| 4.3.5.1 | Heavy Elements, Paint And Similar Surface-Coating Materials | Pass(See Details) |
| 4.3.5.2 | Heavy Elements, Toy Substrate Materials | Pass(See Details) |
| 4.3.6 | Cosmetic, Liquids, Pastes, Putties, Gels, Powders and Item of Avian Feather Origin | N/A |
| 4.3.7 | Stuffing Materials | N/A |
| 4.3.8 | DEHP (DOP) | N/A |
| 4.4 | Electrical / Thermal Energy | N/A |
| 4.5 | Sound Producing Toys | Pass |
| 4.6 Small Objects | | |
| 4.6.1 | Small Objects | N/A |
| 4.6.2 | Mouth-Actuated Toys | N/A |
| 4.6.3 | Labelling Requirements | See Remark |
| | (Remark: The toy does not contain as-received small part.) | |
| 4.7 | Accessible Edges | Pass |
| 4.8 | Projections | Pass |
| 4.9 | Accessible Points | Pass |
| 4.10 | Wires or Rods | N/A |
| 4.11 | Nails And Fasteners | Pass |
| 4.12 | Plastic Film | Pass |
| 4.13.1 | Folding Mechanisms | N/A |
| 4.13.2 | Hinge-Line Clearance | Pass |



Unless otherwise agreed in writing, this document is issued by the Company subject to its General Conditions of Service printed overleaf, available on request or accessible at <http://www.sgs.com/en/Terms-and-Conditions.aspx> and, for electronic format documents, subject to Terms and Conditions for Electronic Documents at <http://www.sgs.com/en/Terms-and-Conditions/Terms-e-Documents.aspx>. Attention is drawn to the limitation of liability, indemnification and jurisdiction issues defined therein. Any holder of this document is advised that information contained hereon reflects the Company's findings at the time of its intervention only and within the limits of Client's instructions, if any. The Company's sole responsibility is to its Client and this document does not exonerate parties to a transaction from exercising all their rights and obligations under the transaction documents. This document cannot be reproduced except in full, without prior written approval of the Company. Any unauthorized alteration, forgery or falsification of the content or appearance of this document is unlawful and offenders may be prosecuted to the fullest extent of the law. Unless otherwise stated the results shown in this test report refer only to the sample(s) tested and such sample(s) are retained for 30 days only.

Attention: To check the authenticity of testing/inspection report & certificate, please contact us at telephone: (86-755) 8307 1443, or email: CN.Doccheck@sgs.com

SGS-CSTC Shanghai Technical Services (Changzhou) Co., Ltd.
Hardlines

Building 30, No. 47, Qingyang North Road, Tianning District, Changzhou, China 213017 t (86-519)85587753
中国·常州·天宁区青洋北路47号30号楼 邮编: 213017 t (86-519)85587753

www.sgs.com
sgs.china@sgs.com

| Clause | Test Description | Result | | | | | | | | | |
|---------------------------------|--|--------------------------|--|------|-------------------------|------------------|-------------|---------------------------------|------|------|------|
| 4.14 | Cords, Straps and Elastic | N/A | | | | | | | | | |
| 4.15 | Stability And Over-Load Requirements | Pass | | | | | | | | | |
| 4.16 | Confined Spaces | N/A | | | | | | | | | |
| 4.17 | Wheels, Tires, And Axles | Pass | | | | | | | | | |
| 4.18 | Holes, Clearance, And Accessibility Of Mechanisms | Pass | | | | | | | | | |
| 4.19 | Simulated Protective Devices | N/A | | | | | | | | | |
| 4.20 | Pacifiers | N/A | | | | | | | | | |
| 4.21 | Projectile Toys | N/A | | | | | | | | | |
| 4.22 | Teethers and Teething Toys | N/A | | | | | | | | | |
| 4.23 | Rattles | N/A | | | | | | | | | |
| 4.24 | Squeeze Toys | N/A | | | | | | | | | |
| 4.25 | Battery-Operated Toys | Pass | | | | | | | | | |
| 4.25.1 | Battery marking | Pass | | | | | | | | | |
| 4.25.2 | Maximum allowable direct current potential | Pass | | | | | | | | | |
| 4.25.3 | Protection against charging non-rechargeable battery | Pass | | | | | | | | | |
| 4.25.4 | Accessible batteries | N/A | | | | | | | | | |
| 4.25.5 | Accessible batteries that can fit completely within small part cylinder | Pass | | | | | | | | | |
| 4.25.6 | Isolation of batteries of different types or capacities | Pass | | | | | | | | | |
| 4.25.7 | Temperature of battery surface | Pass | | | | | | | | | |
| 4.25.8 | Temperature of battery surface or combustion hazard after normal use and abuse test | Pass | | | | | | | | | |
| 4.25.9 | Instruction requirement | Pass | | | | | | | | | |
| 4.25.10.1 | <p>The maximum temperature measured on the insulation of any conductor shall not exceed the temperature rating of the material.</p> <p>The maximum temperature was recorded as follows:</p> <table border="1" style="margin-left: 20px;"> <thead> <tr> <th colspan="2">Ambient temperature (°C)</th> <th>22.0</th> </tr> <tr> <th>Insulation of conductor</th> <th>Temperature (°C)</th> <th>Rating (°C)</th> </tr> </thead> <tbody> <tr> <td>PVC insulated wire (near motor)</td> <td>27.7</td> <td>80°C</td> </tr> </tbody> </table> | Ambient temperature (°C) | | 22.0 | Insulation of conductor | Temperature (°C) | Rating (°C) | PVC insulated wire (near motor) | 27.7 | 80°C | Pass |
| Ambient temperature (°C) | | 22.0 | | | | | | | | | |
| Insulation of conductor | Temperature (°C) | Rating (°C) | | | | | | | | | |
| PVC insulated wire (near motor) | 27.7 | 80°C | | | | | | | | | |



Unless otherwise agreed in writing, this document is issued by the Company subject to its General Conditions of Service printed overleaf, available on request or accessible at <http://www.sgs.com/en/Terms-and-Conditions.aspx> and, for electronic format documents, subject to Terms and Conditions for Electronic Documents at <http://www.sgs.com/en/Terms-and-Conditions/Terms-e-Documents.aspx>. Attention is drawn to the limitation of liability, indemnification and jurisdiction issues defined therein. Any holder of this document is advised that information contained hereon reflects the Company's findings at the time of its intervention only and within the limits of Client's instructions, if any. The Company's sole responsibility is to its Client and this document does not exonerate parties to a transaction from exercising all their rights and obligations under the transaction documents. This document cannot be reproduced except in full, without prior written approval of the Company. Any unauthorized alteration, forgery or falsification of the content or appearance of this document is unlawful and offenders may be prosecuted to the fullest extent of the law. Unless otherwise stated the results shown in this test report refer only to the sample(s) tested and such sample(s) are retained for 30 days only.

Attention: To check the authenticity of testing/inspection report & certificate, please contact us at telephone: (86-755) 8307 1443, or email: CN.Doccheck@sgs.com

Building 30, No. 47, Qingyang North Road, Tianming District, Changzhou, China 213017 t (86-519) 85587753 www.sgs.com.cn
 中国·常州·天宁区青洋北路47号30号楼 邮编: 213017 t (86-519) 85587753 e sgs.china@sgs.com

| Clause | Test Description | Result | | | | | | | | | | |
|---------------------------|--|--------------|-----------------|--------|--------------|---------------------------|--|----------|-------|------|-------|------|
| | PVC insulated wire (near battery) | 27.4 80°C | | | | | | | | | | |
| | Heat shrinkable polyolefin tubing (Near motor) | 38.2 / | | | | | | | | | | |
| | Battery surface | 26.7 / | | | | | | | | | | |
| 4.25.10.2 | The unit did not present a risk of fire when the motor was stalled | Pass | | | | | | | | | | |
| 4.25.10.3 | User replaceable device (fuse type) was found in product and complied with the requirement. | N/A | | | | | | | | | | |
| 4.25.10.4 | <ul style="list-style-type: none"> The polymeric materials in switches passed the glow wire test which ignition rating of 750 °C The switch did not result in short-circuited or stuck in the "on" position when subjected to endurance test and overload tests. <table border="1"> <thead> <tr> <th>Switch Model</th> <th>Test Cycles</th> </tr> </thead> <tbody> <tr> <td>KCD2-1</td> <td>100,000</td> </tr> <tr> <td>TYP:F</td> <td>6,000</td> </tr> <tr> <td>KCD2-002</td> <td>6,000</td> </tr> <tr> <td>KCD4</td> <td>6,000</td> </tr> </tbody> </table> | Switch Model | Test Cycles | KCD2-1 | 100,000 | TYP:F | 6,000 | KCD2-002 | 6,000 | KCD4 | 6,000 | Pass |
| Switch Model | Test Cycles | | | | | | | | | | | |
| KCD2-1 | 100,000 | | | | | | | | | | | |
| TYP:F | 6,000 | | | | | | | | | | | |
| KCD2-002 | 6,000 | | | | | | | | | | | |
| KCD4 | 6,000 | | | | | | | | | | | |
| 4.25.10.5 | User replaceable device (fuse type) was found in product. | N/A | | | | | | | | | | |
| 4.25.10.6 | <ul style="list-style-type: none"> The battery connector was constructed of material with a glow wire ignition rating of 750 °C, and The battery charging system did not present a risk of fire when s short-circuit applied to any point in the length of the charger/battery interconnecting cable The battery did not release electrolyte or cause explosion or fire when test in battery 336 h overcharge. The battery charger was accompanied with separate test certificate demonstrating compliance with specified requirements: <table border="1"> <tbody> <tr> <td>Component:</td> <td>Battery Charger</td> </tr> <tr> <td>Model:</td> <td>LKK-150100 E</td> </tr> <tr> <td>Compliance with standard:</td> <td>UL 1310 Class 2 Power Units CAN/CSA C22.2 No. 223 Power</td> </tr> </tbody> </table> | Component: | Battery Charger | Model: | LKK-150100 E | Compliance with standard: | UL 1310 Class 2 Power Units CAN/CSA C22.2 No. 223 Power | Pass | | | | |
| Component: | Battery Charger | | | | | | | | | | | |
| Model: | LKK-150100 E | | | | | | | | | | | |
| Compliance with standard: | UL 1310 Class 2 Power Units CAN/CSA C22.2 No. 223 Power | | | | | | | | | | | |



Unless otherwise agreed in writing, this document is issued by the Company subject to its General Conditions of Service printed overleaf, available on request or accessible at <http://www.sgs.com/en/Terms-and-Conditions.aspx> and, for electronic format documents, subject to Terms and Conditions for Electronic Documents at <http://www.sgs.com/en/Terms-and-Conditions/Terms-e-Documents.aspx>. Attention is drawn to the limitation of liability, indemnification and jurisdiction issues defined therein. Any holder of this document is advised that information contained hereon reflects the Company's findings at the time of its intervention only and within the limits of Client's instructions, if any. The Company's sole responsibility is to its Client and this document does not exonerate parties to a transaction from exercising all their rights and obligations under the transaction documents. This document cannot be reproduced except in full, without prior written approval of the Company. Any unauthorized alteration, forgery or falsification of the content or appearance of this document is unlawful and offenders may be prosecuted to the fullest extent of the law. Unless otherwise stated the results shown in this test report refer only to the sample(s) tested and such sample(s) are retained for 30 days only.

Attention: To check the authenticity of testing / inspection report & certificate, please contact us at telephone: (86-755) 8307 1443, or email: CN.Doccheck@sgs.com

| Clause | Test Description | Result |
|---------------------------------------|---|--------|
| | Supplies with Extra-low Voltage Class 2 Outputs | |
| | Certificate no. 20201111-EFSH20091854-IE-01-P27 | |
| 4.25.10.7 | Wiring connected to the main/motor battery had short-circuit protection and did not present risk of fire when parts of opposite polarity being shorted circuit. | Pass |
| 4.25.10.8 | The unit had provided strain relief to prevent mechanical stress on wires entering a connector block. | Pass |
| 4.25.10.9 | The unit carried all the safety labeling, producer's markings and additional instructional literature. | Pass |
| 4.25.11 | Toys that Contain Secondary Cells or Secondary Batteries: | N/A |
| 4.26 | Toys Intended to be Attached to a Crib or Playpen | N/A |
| 4.27 | Stuffed and Beanbag-Type Toys | N/A |
| 4.28 | Stroller and Carriage Toys | N/A |
| 4.29 | Art Materials | N/A |
| 4.30 | Toy Gun Marking | N/A |
| 4.31 | Balloons | N/A |
| 4.32 | Certain Toys and Nearly Spherical Ends | N/A |
| 4.33 | Marbles | N/A |
| 4.34 | Balls | N/A |
| 4.35 | Pompoms | N/A |
| 4.36 | Hemispheric-Shaped Objects | N/A |
| 4.37 | Yo Yo Elastic Tether Toys | N/A |
| 4.38 | Magnets | N/A |
| 4.39 | Jaw Entrapment in Handles and Steering Wheels | N/A |
| 4.40 | Expanding Materials | N/A |
| 4.41 | Toy Chest | N/A |
| 5 Safety Labeling Requirements | | |
| 5.1 | Federal Government Requirements | N/A |
| 5.2 | Age Grading Labeling | Pass |
| 5.3 | Safety Labeling Requirements | Pass |



Unless otherwise agreed in writing, this document is issued by the Company subject to its General Conditions of Service printed overleaf, available on request or accessible at <http://www.sgs.com/en/Terms-and-Conditions.aspx> and, for electronic format documents, subject to Terms and Conditions for Electronic Documents at <http://www.sgs.com/en/Terms-and-Conditions/Terms-e-Documents.aspx>. Attention is drawn to the limitation of liability, indemnification and jurisdiction issues defined therein. Any holder of this document is advised that information contained hereon reflects the Company's findings at the time of its intervention only and within the limits of Client's instructions, if any. The Company's sole responsibility is to its Client and this document does not exonerate parties to a transaction from exercising all their rights and obligations under the transaction documents. This document cannot be reproduced except in full, without prior written approval of the Company. Any unauthorized alteration, forgery or falsification of the content or appearance of this document is unlawful and offenders may be prosecuted to the fullest extent of the law. Unless otherwise stated the results shown in this test report refer only to the sample(s) tested and such sample(s) are retained for 30 days only.

Attention: To check the authenticity of testing/inspection report & certificate, please contact us at telephone: (86-755) 8307 1443, or email: CN.Doccheck@sgs.com

Building 30, No. 47, Qingyang North Road, Tianning District, Changzhou, China 213017 t (86-519) 85587753
 中国·常州·天宁区青洋北路47号30号楼 邮编: 213017 t (86-519) 85587753

www.sgs.com
sgs.china@sgs.com

| Clause | Test Description | Result |
|-----------------------------------|---|--------|
| 5.4 | Aquatic Toys | N/A |
| 5.5 | Crib & Playpen Toys | N/A |
| 5.6 | Mobile | N/A |
| 5.7 | Stroller and Carriage Toys | N/A |
| 5.8 | Toys Intended To Be Assembled By An Adult | Pass |
| 5.9 | Simulated Protective Devices | N/A |
| 5.10 | Toys with Functional Sharp Edges and Sharp Points | N/A |
| 5.11 | Small Objects, Small Balls, Marbles, and Balloons | N/A |
| 5.12 | Toy Caps | N/A |
| 5.13 | Art Materials | N/A |
| 5.14 | Electric Toys | N/A |
| 5.15 | Battery-Operated Toys | Pass |
| 5.16 | Promotional Materials | Pass |
| 5.17 | Magnets | N/A |
| 6 Instructional Literature | | |
| 6.1 | Definition and Description | Pass |
| 6.2 | Crib & Playpen Toys | N/A |
| 6.3 | Mobiles | N/A |
| 6.4 | Toys Intended to be Assembled by an Adult | Pass |
| 6.5 | Battery-Operated Toys | Pass |
| 6.6 | Battery Powered Ride-On Toys | Pass |
| 6.7 | Toys in Contact with Food | N/A |
| 6.8 | Toy Chests | N/A |
| 7 Producer' s Markings | | |
| 7.1 | Name And Address Of The Producer Or The Distributor | Pass |
| 7.2 | Battery-Powered Ride-On Toys | Pass |
| 7.3 | Toy Chests | N/A |
| 8 Test Methods | | |
| 8.5 | Normal Use Testing | Pass |
| 8.7 | Impact Test | Pass |
| 8.8 | Torque Test | Pass |
| 8.9 | Tension Test | Pass |
| 8.10 | Compression Test | N/A |



Unless otherwise agreed in writing, this document is issued by the Company subject to its General Conditions of Service printed overleaf, available on request or accessible at <http://www.sgs.com/en/Terms-and-Conditions.aspx> and, for electronic format documents, subject to Terms and Conditions for Electronic Documents at <http://www.sgs.com/en/Terms-and-Conditions/Terms-e-Document.aspx>. Attention is drawn to the limitation of liability, indemnification and jurisdiction issues defined therein. Any holder of this document is advised that information contained hereon reflects the Company's findings at the time of its intervention only and within the limits of Client's instructions, if any. The Company's sole responsibility is to its Client and this document does not exonerate parties to a transaction from exercising all their rights and obligations under the transaction documents. This document cannot be reproduced except in full, without prior written approval of the Company. Any unauthorized alteration, forgery or falsification of the content or appearance of this document is unlawful and offenders may be prosecuted to the fullest extent of the law. Unless otherwise stated the results shown in this test report refer only to the sample(s) tested and such sample(s) are retained for 30 days only.

Attention: To check the authenticity of testing / inspection report & certificate, please contact us at telephone: (86-755) 8307 1443, or email: CN.Doccheck@sgs.com

SGS-CSTC (China) Technical Services (Changzhou) Co., Ltd.
Hardlines

Building 30, No. 47, Qingyang North Road, Tianning District, Changzhou, China 213017 t (86-519) 85587753
中国·常州·天宁区青洋北路47号30号楼 邮编: 213017 t (86-519) 85587753

www.sgs.com
sgs.china@sgs.com

| Clause | Test Description | Result |
|--------|--------------------------|--------|
| 8.12 | Flexure Test | N/A |
| 8.16 | Tension Test for Pompoms | N/A |

Detail of result:

Clause 4.2: Flammability On Solid

Result Data:

| Sample | Burning Rate(inch/sec) |
|---|------------------------|
| BATTERY-POWERED RIDE-ON CHILDREN'S CARS/RIDE ON VEHICLE | DNI |

Notes:

Requirement = A toy / component is considered a “flammable solid” if it ignites and burns with a self-sustaining flame at a rate greater than 0.10 in/sec along its major axis.

DNI = Did Not Ignite.

American Society for Testing and Materials –ASTM F 963-17 –total Lead in Substrate Materials

Test Method : With reference to CPSC-CH-E1002-08.3. Analysis was performed by AAS.

| Test Item(s) | Limit | Unit | MDL | 025 | 026 | 027 |
|-----------------|-------|-------|-----|-----|-----|-----|
| Total Lead (Pb) | 100 | mg/kg | 20 | ND | ND | ND |

| Test Item(s) | Limit | Unit | MDL | 028 | 029 | 030 |
|-----------------|-------|-------|-----|-----|-----|-----|
| Total Lead (Pb) | 100 | mg/kg | 20 | ND | ND | ND |

| Test Item(s) | Limit | Unit | MDL | 031 | 034 | 035 |
|-----------------|-------|-------|-----|-----|-----|-----|
| Total Lead (Pb) | 100 | mg/kg | 20 | ND | ND | ND |

| Test Item(s) | Limit | Unit | MDL | 036 | 037 | 038 |
|-----------------|-------|-------|-----|-----|-----|-----|
| Total Lead (Pb) | 100 | mg/kg | 20 | ND | 46 | ND |

| Test Item(s) | Limit | Unit | MDL | 039 | 040 | 041 |
|-----------------|-------|-------|-----|-----|-----|-----|
| Total Lead (Pb) | 100 | mg/kg | 20 | ND | ND | ND |

Note: The testing was performed by SGS other internal laboratory.



Unless otherwise agreed in writing, this document is issued by the Company subject to its General Conditions of Service printed overleaf, available on request or accessible at <http://www.sgs.com/en/Terms-and-Conditions.aspx> and, for electronic format documents, subject to Terms and Conditions for Electronic Documents at <http://www.sgs.com/en/Terms-and-Conditions/Terms-e-Documents.aspx>. Attention is drawn to the limitation of liability, indemnification and jurisdiction issues defined therein. Any holder of this document is advised that information contained hereon reflects the Company's findings at the time of its intervention only and within the limits of Client's instructions, if any. The Company's sole responsibility is to its Client and this document does not exonerate parties to a transaction from exercising all their rights and obligations under the transaction documents. This document cannot be reproduced except in full, without prior written approval of the Company. Any unauthorized alteration, forgery or falsification of the content or appearance of this document is unlawful and offenders may be prosecuted to the fullest extent of the law. Unless otherwise stated the results shown in this test report refer only to the sample(s) tested and such sample(s) are retained for 30 days only.

Attention: To check the authenticity of testing / inspection report & certificate, please contact us at telephone: (86-755) 8307 1443, or email: CN.Doccheck@sgs.com

Building 30, No. 47, Qingyang North Road, Tianming District, Changzhou, China 213017 t (86-519)85587753 www.sgs.com.cn
 中国·常州·天宁区青洋北路47号30号楼 邮编: 213017 t (86-519)85587753 e sgs.china@sgs.com

American Society for Testing and Materials –ASTM F 963-17– total Lead in paint and similar surface-coating materials

Test Method : With reference to CPSC-CH-E1003-09.1, analysis was performed by AAS.

| <u>Test Item(s)</u> | <u>Limit</u> | <u>Unit</u> | <u>MDL</u> | <u>032</u> | <u>033</u> |
|---------------------|--------------|-------------|------------|------------|------------|
| Total Lead (Pb) | 90 | mg/kg | 20 | ND | ND |

Note: The testing was performed by SGS other internal laboratory.

American Society for Testing and Materials –ASTM F 963-17 – soluble Heavy Metal for paint and similar surface-coating materials/ Substrate Materials

Test Method : With reference to ASTM F 963-17 (Clause 8.3), analysis was performed by ICP-OES.

| <u>Test Item(s)</u> | <u>Limit</u> | <u>Unit</u> | <u>MDL</u> | <u>001</u> | <u>002</u> | <u>003</u> |
|-----------------------|--------------|-------------|------------|------------|------------|------------|
| Soluble Lead (Pb) | 90 | mg/kg | 5 | ND | ND | ND |
| Soluble Antimony (Sb) | 60 | mg/kg | 5 | ND | ND | ND |
| Soluble Arsenic (As) | 25 | mg/kg | 2.5 | ND | ND | ND |
| Soluble Barium (Ba) | 1000 | mg/kg | 10 | ND | ND | ND |
| Soluble Cadmium (Cd) | 75 | mg/kg | 5 | ND | ND | ND |
| Soluble Chromium (Cr) | 60 | mg/kg | 5 | ND | ND | ND |
| Soluble Mercury (Hg) | 60 | mg/kg | 5 | ND | ND | ND |
| Soluble Selenium (Se) | 500 | mg/kg | 10 | ND | ND | ND |

| <u>Test Item(s)</u> | <u>Limit</u> | <u>Unit</u> | <u>MDL</u> | <u>004</u> | <u>005</u> | <u>006</u> |
|-----------------------|--------------|-------------|------------|------------|------------|------------|
| Soluble Lead (Pb) | 90 | mg/kg | 5 | ND | ND | ND |
| Soluble Antimony (Sb) | 60 | mg/kg | 5 | ND | ND | ND |
| Soluble Arsenic (As) | 25 | mg/kg | 2.5 | ND | ND | ND |
| Soluble Barium (Ba) | 1000 | mg/kg | 10 | ND | ND | ND |
| Soluble Cadmium (Cd) | 75 | mg/kg | 5 | ND | ND | ND |
| Soluble Chromium (Cr) | 60 | mg/kg | 5 | ND | ND | ND |
| Soluble Mercury (Hg) | 60 | mg/kg | 5 | ND | ND | ND |
| Soluble Selenium (Se) | 500 | mg/kg | 10 | ND | ND | ND |



Unless otherwise agreed in writing, this document is issued by the Company subject to its General Conditions of Service printed overleaf, available on request or accessible at <http://www.sgs.com/en/Terms-and-Conditions.aspx> and, for electronic format documents, subject to Terms and Conditions for Electronic Documents at <http://www.sgs.com/en/Terms-and-Conditions/Terms-e-Documents.aspx>. Attention is drawn to the limitation of liability, indemnification and jurisdiction issues defined therein. Any holder of this document is advised that information contained hereon reflects the Company's findings at the time of its intervention only and within the limits of Client's instructions, if any. The Company's sole responsibility is to its Client and this document does not exonerate parties to a transaction from exercising all their rights and obligations under the transaction documents. This document cannot be reproduced except in full, without prior written approval of the Company. Any unauthorized alteration, forgery or falsification of the content or appearance of this document is unlawful and offenders may be prosecuted to the fullest extent of the law. Unless otherwise stated the results shown in this test report refer only to the sample(s) tested and such sample(s) are retained for 30 days only.

Attention: To check the authenticity of testing/inspection report & certificate, please contact us at telephone: (86-755) 8307 1443, or email: CN.Doccheck@sgs.com

SGS-CSTC Standards Technical Services (Changzhou) Co., Ltd.
Hardlines

Building 30, No. 47, Qingyang North Road, Tianning District, Changzhou, China 213017 t (86-519) 85587753
中国·常州·天宁区青洋北路47号30号楼 邮编: 213017 t (86-519) 85587753

[www.sgs.com.cn](http://www.sgs.com)
sgs.china@sgs.com

| <u>Test Item(s)</u> | <u>Limit</u> | <u>Unit</u> | <u>MDL</u> | <u>007</u> | <u>008</u> | <u>009</u> |
|-----------------------|--------------|-------------|------------|------------|------------|------------|
| Soluble Lead (Pb) | 90 | mg/kg | 5 | ND | ND | ND |
| Soluble Antimony (Sb) | 60 | mg/kg | 5 | ND | ND | ND |
| Soluble Arsenic (As) | 25 | mg/kg | 2.5 | ND | ND | ND |
| Soluble Barium (Ba) | 1000 | mg/kg | 10 | ND | ND | ND |
| Soluble Cadmium (Cd) | 75 | mg/kg | 5 | ND | ND | ND |
| Soluble Chromium (Cr) | 60 | mg/kg | 5 | ND | ND | ND |
| Soluble Mercury (Hg) | 60 | mg/kg | 5 | ND | ND | ND |
| Soluble Selenium (Se) | 500 | mg/kg | 10 | ND | ND | ND |

| <u>Test Item(s)</u> | <u>Limit</u> | <u>Unit</u> | <u>MDL</u> | <u>010</u> | <u>011</u> | <u>012</u> |
|-----------------------|--------------|-------------|------------|------------|------------|------------|
| Soluble Lead (Pb) | 90 | mg/kg | 5 | ND | ND | ND |
| Soluble Antimony (Sb) | 60 | mg/kg | 5 | ND | ND | ND |
| Soluble Arsenic (As) | 25 | mg/kg | 2.5 | ND | ND | ND |
| Soluble Barium (Ba) | 1000 | mg/kg | 10 | ND | ND | ND |
| Soluble Cadmium (Cd) | 75 | mg/kg | 5 | ND | ND | ND |
| Soluble Chromium (Cr) | 60 | mg/kg | 5 | ND | ND | ND |
| Soluble Mercury (Hg) | 60 | mg/kg | 5 | ND | ND | ND |
| Soluble Selenium (Se) | 500 | mg/kg | 10 | ND | ND | ND |

| <u>Test Item(s)</u> | <u>Limit</u> | <u>Unit</u> | <u>MDL</u> | <u>013</u> | <u>014</u> | <u>015</u> |
|-----------------------|--------------|-------------|------------|------------|------------|------------|
| Soluble Lead (Pb) | 90 | mg/kg | 5 | ND | ND | ND |
| Soluble Antimony (Sb) | 60 | mg/kg | 5 | ND | ND | ND |
| Soluble Arsenic (As) | 25 | mg/kg | 2.5 | ND | ND | ND |
| Soluble Barium (Ba) | 1000 | mg/kg | 10 | ND | ND | ND |
| Soluble Cadmium (Cd) | 75 | mg/kg | 5 | ND | ND | ND |
| Soluble Chromium (Cr) | 60 | mg/kg | 5 | ND | ND | ND |
| Soluble Mercury (Hg) | 60 | mg/kg | 5 | ND | ND | ND |
| Soluble Selenium (Se) | 500 | mg/kg | 10 | ND | ND | ND |

| <u>Test Item(s)</u> | <u>Limit</u> | <u>Unit</u> | <u>MDL</u> | <u>016</u> | <u>017</u> | <u>018</u> |
|-----------------------|--------------|-------------|------------|------------|------------|------------|
| Soluble Lead (Pb) | 90 | mg/kg | 5 | ND | ND | ND |
| Soluble Antimony (Sb) | 60 | mg/kg | 5 | ND | ND | ND |
| Soluble Arsenic (As) | 25 | mg/kg | 2.5 | ND | ND | ND |
| Soluble Barium (Ba) | 1000 | mg/kg | 10 | ND | ND | ND |



Unless otherwise agreed in writing, this document is issued by the Company subject to its General Conditions of Service printed overleaf, available on request or accessible at <http://www.sgs.com/en/Terms-and-Conditions.aspx> and, for electronic format documents, subject to Terms and Conditions for Electronic Documents at <http://www.sgs.com/en/Terms-and-Conditions/Terms-e-Documents.aspx>. Attention is drawn to the limitation of liability, indemnification and jurisdiction issues defined therein. Any holder of this document is advised that information contained hereon reflects the Company's findings at the time of its intervention only and within the limits of Client's instructions, if any. The Company's sole responsibility is to its Client and this document does not exonerate parties to a transaction from exercising all their rights and obligations under the transaction documents. This document cannot be reproduced except in full, without prior written approval of the Company. Any unauthorized alteration, forgery or falsification of the content or appearance of this document is unlawful and offenders may be prosecuted to the fullest extent of the law. Unless otherwise stated the results shown in this test report refer only to the sample(s) tested and such sample(s) are retained for 30 days only.

Attention: To check the authenticity of testing/inspection report & certificate, please contact us at telephone: (86-755) 8307 1443, or email: CN.Doccheck@sgs.com

SGS-CSTC Standards Technical Services (Changzhou) Co., Ltd.
Hardlines

Building 30, No. 47, Qingyang North Road, Tianning District, Changzhou, China 213017 t (86-519)85587753
中国·常州·天宁区青洋北路47号30号楼 邮编: 213017 t (86-519)85587753

www.sgs.com
www.sgs.china@sgs.com

| <u>Test Item(s)</u> | <u>Limit</u> | <u>Unit</u> | <u>MDL</u> | <u>016</u> | <u>017</u> | <u>018</u> |
|-----------------------|--------------|-------------|------------|------------|------------|------------|
| Soluble Cadmium (Cd) | 75 | mg/kg | 5 | ND | ND | ND |
| Soluble Chromium (Cr) | 60 | mg/kg | 5 | ND | ND | ND |
| Soluble Mercury (Hg) | 60 | mg/kg | 5 | ND | ND | ND |
| Soluble Selenium (Se) | 500 | mg/kg | 10 | ND | ND | ND |

| <u>Test Item(s)</u> | <u>Limit</u> | <u>Unit</u> | <u>MDL</u> | <u>019</u> | <u>020</u> | <u>021</u> |
|-----------------------|--------------|-------------|------------|------------|------------|------------|
| Soluble Lead (Pb) | 90 | mg/kg | 5 | ND | ND | ND |
| Soluble Antimony (Sb) | 60 | mg/kg | 5 | ND | ND | ND |
| Soluble Arsenic (As) | 25 | mg/kg | 2.5 | ND | ND | ND |
| Soluble Barium (Ba) | 1000 | mg/kg | 10 | ND | ND | ND |
| Soluble Cadmium (Cd) | 75 | mg/kg | 5 | ND | ND | ND |
| Soluble Chromium (Cr) | 60 | mg/kg | 5 | ND | ND | ND |
| Soluble Mercury (Hg) | 60 | mg/kg | 5 | ND | ND | ND |
| Soluble Selenium (Se) | 500 | mg/kg | 10 | ND | ND | ND |

| <u>Test Item(s)</u> | <u>Limit</u> | <u>Unit</u> | <u>MDL</u> | <u>022</u> | <u>023</u> | <u>024</u> |
|-----------------------|--------------|-------------|------------|------------|------------|------------|
| Soluble Lead (Pb) | 90 | mg/kg | 5 | ND | ND | ND |
| Soluble Antimony (Sb) | 60 | mg/kg | 5 | ND | ND | ND |
| Soluble Arsenic (As) | 25 | mg/kg | 2.5 | ND | ND | ND |
| Soluble Barium (Ba) | 1000 | mg/kg | 10 | ND | ND | ND |
| Soluble Cadmium (Cd) | 75 | mg/kg | 5 | ND | ND | ND |
| Soluble Chromium (Cr) | 60 | mg/kg | 5 | ND | ND | ND |
| Soluble Mercury (Hg) | 60 | mg/kg | 5 | ND | ND | ND |
| Soluble Selenium (Se) | 500 | mg/kg | 10 | ND | ND | ND |

| <u>Test Item(s)</u> | <u>Limit</u> | <u>Unit</u> | <u>MDL</u> | <u>025</u> | <u>026</u> | <u>027</u> |
|-----------------------|--------------|-------------|------------|------------|------------|------------|
| Soluble Lead (Pb) | 90 | mg/kg | 5 | ND | ND | ND |
| Soluble Antimony (Sb) | 60 | mg/kg | 5 | ND | ND | ND |
| Soluble Arsenic (As) | 25 | mg/kg | 2.5 | ND | ND | ND |
| Soluble Barium (Ba) | 1000 | mg/kg | 10 | ND | ND | ND |
| Soluble Cadmium (Cd) | 75 | mg/kg | 5 | ND | ND | ND |
| Soluble Chromium (Cr) | 60 | mg/kg | 5 | ND | ND | ND |
| Soluble Mercury (Hg) | 60 | mg/kg | 5 | ND | ND | ND |
| Soluble Selenium (Se) | 500 | mg/kg | 10 | ND | ND | ND |



Unless otherwise agreed in writing, this document is issued by the Company subject to its General Conditions of Service printed overleaf, available on request or accessible at <http://www.sgs.com/en/Terms-and-Conditions.aspx> and, for electronic format documents, subject to Terms and Conditions for Electronic Documents at <http://www.sgs.com/en/Terms-and-Conditions/Terms-e-Documents.aspx>. Attention is drawn to the limitation of liability, indemnification and jurisdiction issues defined therein. Any holder of this document is advised that information contained hereon reflects the Company's findings at the time of its intervention only and within the limits of Client's instructions, if any. The Company's sole responsibility is to its Client and this document does not exonerate parties to a transaction from exercising all their rights and obligations under the transaction documents. This document cannot be reproduced except in full, without prior written approval of the Company. Any unauthorized alteration, forgery or falsification of the content or appearance of this document is unlawful and offenders may be prosecuted to the fullest extent of the law. Unless otherwise stated the results shown in this test report refer only to the sample(s) tested and such sample(s) are retained for 30 days only.

Attention: To check the authenticity of testing/inspection report & certificate, please contact us at telephone: (86-755) 8307 1443, or email: CN.Doccheck@sgs.com

SGS-CSTC Standards Technical Services (Changzhou) Co., Ltd.
Hardlines

Building 30, No. 47, Qingyang North Road, Tianning District, Changzhou, China 213017 t (86-519)85587753
中国·常州·天宁区青洋北路47号30号楼 邮编: 213017 t (86-519)85587753

www.sgs.com
www.sgs.china@sgs.com

| Test Item(s) | Limit | Unit | MDL | 028 | 029 | 030 |
|-----------------------|-------|-------|-----|-----|-----|-----|
| Soluble Lead (Pb) | 90 | mg/kg | 5 | ND | ND | ND |
| Soluble Antimony (Sb) | 60 | mg/kg | 5 | ND | ND | ND |
| Soluble Arsenic (As) | 25 | mg/kg | 2.5 | ND | ND | ND |
| Soluble Barium (Ba) | 1000 | mg/kg | 10 | ND | 29 | ND |
| Soluble Cadmium (Cd) | 75 | mg/kg | 5 | ND | ND | ND |
| Soluble Chromium (Cr) | 60 | mg/kg | 5 | ND | ND | ND |
| Soluble Mercury (Hg) | 60 | mg/kg | 5 | ND | ND | ND |
| Soluble Selenium (Se) | 500 | mg/kg | 10 | ND | ND | ND |

| Test Item(s) | Limit | Unit | MDL | 031 | 032 | 033 |
|-----------------------|-------|-------|-----|-----|-----|-----|
| Soluble Lead (Pb) | 90 | mg/kg | 5 | ND | ND | - |
| Soluble Antimony (Sb) | 60 | mg/kg | 5 | ND | ND | - |
| Soluble Arsenic (As) | 25 | mg/kg | 2.5 | ND | ND | - |
| Soluble Barium (Ba) | 1000 | mg/kg | 10 | ND | ND | - |
| Soluble Cadmium (Cd) | 75 | mg/kg | 5 | ND | ND | - |
| Soluble Chromium (Cr) | 60 | mg/kg | 5 | ND | ND | - |
| Soluble Mercury (Hg) | 60 | mg/kg | 5 | ND | ND | - |
| Soluble Selenium (Se) | 500 | mg/kg | 10 | ND | ND | - |

Notes :

- (1) Results shown are of the adjusted analytical results
- (2) As received, the test portion of samples 033 from one whole sample are less than 10mg, therefore such components were not tested for certain migration elements, as specified in ASTM F963-17 Clause 8.3.3.6 (2) – Selection of Test Portions

Note: The testing was performed by SGS other internal laboratory.

2. Public Act 097-0612 of the US State of Illinois, the Lead Poisoning Prevention Act-Lead Content in paint/similar surface coating material

Test Method : CPSC Test Method: CPSC-CH-E1003-09.1' Standard Operation Procedure for Determining Lead (Pb) in Paint and Other Similar Surface Coatings'

| Test Item(s) | Limit | Unit | MDL | 032 | 033 |
|-------------------|-------|------|-----|-------------|-------------|
| Lead (Pb) | 40 | ppm | 20 | ND | ND |
| Conclusion | | | | PASS | PASS |



Unless otherwise agreed in writing, this document is issued by the Company subject to its General Conditions of Service printed overleaf, available on request or accessible at <http://www.sgs.com/en/Terms-and-Conditions.aspx> and, for electronic format documents, subject to Terms and Conditions for Electronic Documents at <http://www.sgs.com/en/Terms-and-Conditions/Terms-e-Documents.aspx>. Attention is drawn to the limitation of liability, indemnification and jurisdiction issues defined therein. Any holder of this document is advised that information contained hereon reflects the Company's findings at the time of its intervention only and within the limits of Client's instructions, if any. The Company's sole responsibility is to its Client and this document does not exonerate parties to a transaction from exercising all their rights and obligations under the transaction documents. This document cannot be reproduced except in full, without prior written approval of the Company. Any unauthorized alteration, forgery or falsification of the content or appearance of this document is unlawful and offenders may be prosecuted to the fullest extent of the law. Unless otherwise stated the results shown in this test report refer only to the sample(s) tested and such sample(s) are retained for 30 days only.
Attention: To check the authenticity of testing/inspection report & certificate, please contact us at telephone: (86-755) 8307 1443, or email: CN.Doccheck@sgs.com
 Building 30, No. 47, Qingyang North Road, Tianning District, Changzhou, China 213017 t (86-519)85587753 www.sgs.com.cn
 中国·常州·天宁区青洋北路47号30号楼 邮编: 213017 t (86-519)85587753 e sgs.china@sgs.com

Note:

- (1) The maximum limit is derived from customer requirements.
- (2) The testing was performed by SGS other internal laboratory.

3. Part 1303, Title 16, Code of Federal Regulations, Chapter II – Consumer Products Safety Commission of U.S.A. requirement-Lead

Test Method : With reference to CPSC Test Method: CPSC-CH-E1003-09.1, analysis was performed by AAS.

| Test Item(s) | Limit | Unit | MDL | 032 | 033 |
|-------------------|-------|------|-------|-------------|-------------|
| Lead (Pb) | 0.009 | % | 0.002 | ND | ND |
| Conclusion | | | | PASS | PASS |

Note: The testing was performed by SGS other internal laboratory.

4. CPSIA section 101(f)-Lead in paint/similar surface coating material

Test Method : With reference to CPSC-CH-E1003-09.1, analysis was performed by AAS or ICP-OES.

| Test Item(s) | Limit | Unit | MDL | 032 |
|-------------------|-------|------|-------|-------------|
| Lead (Pb) | 0.009 | % | 0.002 | ND |
| Conclusion | | | | PASS |

| Test Item(s) | Limit | Unit | MDL | 033 |
|-------------------|-------|------|-------|-------------|
| Lead (Pb) | 0.009 | % | 0.002 | ND |
| Conclusion | | | | PASS |

Note: The testing was performed by SGS other internal laboratory.

5. CPSIA section 101(a)(2)-Lead in accessible substrate materials (Non-Metal)

Test Method : With reference to CPSC-CH-E1002-08.3 ,analysis was performed by AAS or ICP-OES.

| Test Item(s) | Limit | Unit | MDL | 025 |
|-------------------|-------|------|-------|-------------|
| Lead (Pb) | 0.01 | % | 0.002 | ND |
| Conclusion | | | | PASS |



Test Report

No.: CZHL2206005319TY

Date: AUG. 09, 2022

Page 14 of 44

| <u>Test Item(s)</u> | <u>Limit</u> | <u>Unit</u> | <u>MDL</u> | <u>026</u> |
|---------------------|--------------|-------------|------------|-------------|
| Lead (Pb) | 0.01 | % | 0.002 | ND |
| Conclusion | | | | PASS |

| <u>Test Item(s)</u> | <u>Limit</u> | <u>Unit</u> | <u>MDL</u> | <u>027</u> |
|---------------------|--------------|-------------|------------|-------------|
| Lead (Pb) | 0.01 | % | 0.002 | ND |
| Conclusion | | | | PASS |

| <u>Test Item(s)</u> | <u>Limit</u> | <u>Unit</u> | <u>MDL</u> | <u>028</u> |
|---------------------|--------------|-------------|------------|-------------|
| Lead (Pb) | 0.01 | % | 0.002 | ND |
| Conclusion | | | | PASS |

| <u>Test Item(s)</u> | <u>Limit</u> | <u>Unit</u> | <u>MDL</u> | <u>029</u> |
|---------------------|--------------|-------------|------------|-------------|
| Lead (Pb) | 0.01 | % | 0.002 | ND |
| Conclusion | | | | PASS |

| <u>Test Item(s)</u> | <u>Limit</u> | <u>Unit</u> | <u>MDL</u> | <u>030</u> |
|---------------------|--------------|-------------|------------|-------------|
| Lead (Pb) | 0.01 | % | 0.002 | ND |
| Conclusion | | | | PASS |

| <u>Test Item(s)</u> | <u>Limit</u> | <u>Unit</u> | <u>MDL</u> | <u>031</u> |
|---------------------|--------------|-------------|------------|-------------|
| Lead (Pb) | 0.01 | % | 0.002 | ND |
| Conclusion | | | | PASS |

| <u>Test Item(s)</u> | <u>Limit</u> | <u>Unit</u> | <u>MDL</u> | <u>034</u> |
|---------------------|--------------|-------------|------------|-------------|
| Lead (Pb) | 0.01 | % | 0.002 | ND |
| Conclusion | | | | PASS |

| <u>Test Item(s)</u> | <u>Limit</u> | <u>Unit</u> | <u>MDL</u> | <u>035</u> |
|---------------------|--------------|-------------|------------|-------------|
| Lead (Pb) | 0.01 | % | 0.002 | ND |
| Conclusion | | | | PASS |

| <u>Test Item(s)</u> | <u>Limit</u> | <u>Unit</u> | <u>MDL</u> | <u>036</u> |
|---------------------|--------------|-------------|------------|-------------|
| Lead (Pb) | 0.01 | % | 0.002 | ND |
| Conclusion | | | | PASS |



Unless otherwise agreed in writing, this document is issued by the Company subject to its General Conditions of Service printed overleaf, available on request or accessible at <http://www.sgs.com/en/Terms-and-Conditions.aspx> and, for electronic format documents, subject to Terms and Conditions for Electronic Documents at <http://www.sgs.com/en/Terms-and-Conditions/Terms-e-Documents.aspx>. Attention is drawn to the limitation of liability, indemnification and jurisdiction issues defined therein. Any holder of this document is advised that information contained hereon reflects the Company's findings at the time of its intervention only and within the limits of Client's instructions, if any. The Company's sole responsibility is to its Client and this document does not exonerate parties to a transaction from exercising all their rights and obligations under the transaction documents. This document cannot be reproduced except in full, without prior written approval of the Company. Any unauthorized alteration, forgery or falsification of the content or appearance of this document is unlawful and offenders may be prosecuted to the fullest extent of the law. Unless otherwise stated the results shown in this test report refer only to the sample(s) tested and such sample(s) are retained for 30 days only.

Attention: To check the authenticity of testing/inspection report & certificate, please contact us at telephone: (86-755) 8307 1443, or email: CN.Doccheck@sgs.com

SGS-CSTC Standards Technical Services (Changzhou) Co., Ltd.
Hardlines

Building 30, No. 47, Qingyang North Road, Tianning District, Changzhou, China 213017 t (86-519) 85587753
中国·常州·天宁区青洋北路47号30号楼 邮编: 213017 t (86-519) 85587753

[www.sgs.com.cn](http://www.sgs.com)
sgs.china@sgs.com

Test Report No.: CZHL2206005319TY Date: AUG. 09, 2022 Page 15 of 44

| Test Item(s) | Limit | Unit | MDL | 037 |
|-------------------|-------|------|-------|-------------|
| Lead (Pb) | 0.01 | % | 0.002 | 0.0046 |
| Conclusion | | | | PASS |

| Test Item(s) | Limit | Unit | MDL | 038 |
|-------------------|-------|------|-------|-------------|
| Lead (Pb) | 0.01 | % | 0.002 | ND |
| Conclusion | | | | PASS |

| Test Item(s) | Limit | Unit | MDL | 039 |
|-------------------|-------|------|-------|-------------|
| Lead (Pb) | 0.01 | % | 0.002 | ND |
| Conclusion | | | | PASS |

| Test Item(s) | Limit | Unit | MDL | 040 |
|-------------------|-------|------|-------|-------------|
| Lead (Pb) | 0.01 | % | 0.002 | ND |
| Conclusion | | | | PASS |

| Test Item(s) | Limit | Unit | MDL | 041 |
|-------------------|-------|------|-------|-------------|
| Lead (Pb) | 0.01 | % | 0.002 | ND |
| Conclusion | | | | PASS |

Note: The testing was performed by SGS other internal laboratory.

**6. CONSUMER PRODUCT SAFETY COMMISSION---16 CFR Part 1307 [Docket No. CPSC-2014-0033],
Final Rule, amending CPSIA section 108, Prohibition on Sale of Certain Products Containing Specified
Phthalates**

Test Method : With reference to CPSC-CH-C1001-09.4(2018), analysis was performed by GC-MS.

| Test Item(s) | CAS NO. | Limit | Unit | MDL | 025 |
|--|----------|-------|------|-------|-----|
| Benzyl Butyl Phthalate (BBP) | 85-68-7 | 0.1 | % | 0.005 | ND |
| Di-butyl Phthalate (DBP) | 84-74-2 | 0.1 | % | 0.005 | ND |
| Dicyclohexyl Phthalates (DCHP) | 84-61-7 | 0.1 | % | 0.005 | ND |
| Di(2-ethylhexyl)phthalate/Bis(2-ethylhexyl) phthalate (DEHP) | 117-81-7 | 0.1 | % | 0.005 | ND |
| Dihexyl Phthalates (DHEXP/ DnHP) | 84-75-3 | 0.1 | % | 0.005 | ND |
| Diisobutyl Phthalates (DIBP) | 84-69-5 | 0.1 | % | 0.005 | ND |



Unless otherwise agreed in writing, this document is issued by the Company subject to its General Conditions of Service printed overleaf, available on request or accessible at <http://www.sgs.com/en/Terms-and-Conditions.aspx> and, for electronic format documents, subject to Terms and Conditions for Electronic Documents at <http://www.sgs.com/en/Terms-and-Conditions/Terms-e-Documents.aspx>. Attention is drawn to the limitation of liability, indemnification and jurisdiction issues defined therein. Any holder of this document is advised that information contained hereon reflects the Company's findings at the time of its intervention only and within the limits of Client's instructions, if any. The Company's sole responsibility is to its Client and this document does not exonerate parties to a transaction from exercising all their rights and obligations under the transaction documents. This document cannot be reproduced except in full, without prior written approval of the Company. Any unauthorized alteration, forgery or falsification of the content or appearance of this document is unlawful and offenders may be prosecuted to the fullest extent of the law. Unless otherwise stated the results shown in this test report refer only to the sample(s) tested and such sample(s) are retained for 30 days only.
Attention: To check the authenticity of testing/inspection report & certificate, please contact us at telephone: (86-755) 8307 1443, or email: CN.Doccheck@sgs.com

Building 30, No. 47, Qingyang North Road, Tianning District, Changzhou, China 213017 t (86-519)85587753 www.sgs.com.cn
中国·常州·天宁区青洋北路47号30号楼 邮编: 213017 t (86-519)85587753 e sgs.china@sgs.com

Test Report No.: CZHL2206005319TY **Date:** AUG. 09, 2022 Page 16 of 44

| Test Item(s) | CAS NO. | Limit | Unit | MDL | 025 |
|-----------------------------|---------------------------|-------|------|-------|-------------|
| Diisononyl Phthalate (DINP) | 28553-12-0 /68515-48-0 | 0.1 | % | 0.005 | ND |
| Dipentyl Phthalates (DPENP) | 131-18-0 | 0.1 | % | 0.005 | ND |
| Conclusion | | | | | PASS |

| Test Item(s) | CAS NO. | Limit | Unit | MDL | 026 |
|--|---------------------------|-------|------|-------|-------------|
| Benzyl Butyl Phthalate (BBP) | 85-68-7 | 0.1 | % | 0.005 | ND |
| Di-butyl Phthalate (DBP) | 84-74-2 | 0.1 | % | 0.005 | ND |
| Dicyclohexyl Phthalates (DCHP) | 84-61-7 | 0.1 | % | 0.005 | ND |
| Di(2-ethylhexyl)phthalate/Bis(2-ethylhexyl) phthalate (DEHP) | 117-81-7 | 0.1 | % | 0.005 | ND |
| Dihexyl Phthalates (DHEXP/ DnHP) | 84-75-3 | 0.1 | % | 0.005 | ND |
| Diisobutyl Phthalates (DIBP) | 84-69-5 | 0.1 | % | 0.005 | ND |
| Diisononyl Phthalate (DINP) | 28553-12-0 /68515-48-0 | 0.1 | % | 0.005 | ND |
| Dipentyl Phthalates (DPENP) | 131-18-0 | 0.1 | % | 0.005 | ND |
| Conclusion | | | | | PASS |

| Test Item(s) | CAS NO. | Limit | Unit | MDL | 032 |
|--|---------------------------|-------|------|-------|-------------|
| Benzyl Butyl Phthalate (BBP) | 85-68-7 | 0.1 | % | 0.005 | ND |
| Di-butyl Phthalate (DBP) | 84-74-2 | 0.1 | % | 0.005 | ND |
| Dicyclohexyl Phthalates (DCHP) | 84-61-7 | 0.1 | % | 0.005 | ND |
| Di(2-ethylhexyl)phthalate/Bis(2-ethylhexyl) phthalate (DEHP) | 117-81-7 | 0.1 | % | 0.005 | ND |
| Dihexyl Phthalates (DHEXP/ DnHP) | 84-75-3 | 0.1 | % | 0.005 | ND |
| Diisobutyl Phthalates (DIBP) | 84-69-5 | 0.1 | % | 0.005 | ND |
| Diisononyl Phthalate (DINP) | 28553-12-0 /68515-48-0 | 0.1 | % | 0.005 | ND |
| Dipentyl Phthalates (DPENP) | 131-18-0 | 0.1 | % | 0.005 | ND |
| Conclusion | | | | | PASS |



Unless otherwise agreed in writing, this document is issued by the Company subject to its General Conditions of Service printed overleaf, available on request or accessible at <http://www.sgs.com/en/Terms-and-Conditions.aspx> and, for electronic format documents, subject to Terms and Conditions for Electronic Documents at <http://www.sgs.com/en/Terms-and-Conditions/Terms-e-Documents.aspx>. Attention is drawn to the limitation of liability, indemnification and jurisdiction issues defined therein. Any holder of this document is advised that information contained hereon reflects the Company's findings at the time of its intervention only and within the limits of Client's instructions, if any. The Company's sole responsibility is to its Client and this document does not exonerate parties to a transaction from exercising all their rights and obligations under the transaction documents. This document cannot be reproduced except in full, without prior written approval of the Company. Any unauthorized alteration, forgery or falsification of the content or appearance of this document is unlawful and offenders may be prosecuted to the fullest extent of the law. Unless otherwise stated the results shown in this test report refer only to the sample(s) tested and such sample(s) are retained for 30 days only.

Attention: To check the authenticity of testing/inspection report & certificate, please contact us at telephone: (86-755) 8307 1443, or email: CN.Doccheck@sgs.com

| <u>Test Item(s)</u> | <u>CAS NO.</u> | <u>Limit</u> | <u>Unit</u> | <u>MDL</u> | <u>033</u> |
|--|---------------------------|--------------|-------------|------------|------------|
| Benzyl Butyl Phthalate (BBP) | 85-68-7 | 0.1 | % | 0.005 | ND |
| Di-butyl Phthalate (DBP) | 84-74-2 | 0.1 | % | 0.005 | ND |
| Dicyclohexyl Phthalates (DCHP) | 84-61-7 | 0.1 | % | 0.005 | ND |
| Di(2-ethylhexyl)phthalate/Bis(2-ethylhexyl) phthalate (DEHP) | 117-81-7 | 0.1 | % | 0.005 | ND |
| Dihexyl Phthalates (DHEXP/ DnHP) | 84-75-3 | 0.1 | % | 0.005 | ND |
| Diisobutyl Phthalates (DIBP) | 84-69-5 | 0.1 | % | 0.005 | ND |
| Diisononyl Phthalate (DINP) | 28553-12-0 /68515-48-0 | 0.1 | % | 0.005 | ND |
| Dipentyl Phthalates (DPENP) | 131-18-0 | 0.1 | % | 0.005 | ND |

Conclusion

PASS

| <u>Test Item(s)</u> | <u>CAS NO.</u> | <u>Limit</u> | <u>Unit</u> | <u>MDL</u> | <u>034</u> |
|--|---------------------------|--------------|-------------|------------|------------|
| Benzyl Butyl Phthalate (BBP) | 85-68-7 | 0.1 | % | 0.005 | ND |
| Di-butyl Phthalate (DBP) | 84-74-2 | 0.1 | % | 0.005 | ND |
| Dicyclohexyl Phthalates (DCHP) | 84-61-7 | 0.1 | % | 0.005 | ND |
| Di(2-ethylhexyl)phthalate/Bis(2-ethylhexyl) phthalate (DEHP) | 117-81-7 | 0.1 | % | 0.005 | ND |
| Dihexyl Phthalates (DHEXP/ DnHP) | 84-75-3 | 0.1 | % | 0.005 | ND |
| Diisobutyl Phthalates (DIBP) | 84-69-5 | 0.1 | % | 0.005 | ND |
| Diisononyl Phthalate (DINP) | 28553-12-0 /68515-48-0 | 0.1 | % | 0.005 | ND |
| Dipentyl Phthalates (DPENP) | 131-18-0 | 0.1 | % | 0.005 | ND |

Conclusion

PASS

| <u>Test Item(s)</u> | <u>CAS NO.</u> | <u>Limit</u> | <u>Unit</u> | <u>MDL</u> | <u>035</u> |
|--|----------------|--------------|-------------|------------|------------|
| Benzyl Butyl Phthalate (BBP) | 85-68-7 | 0.1 | % | 0.005 | ND |
| Di-butyl Phthalate (DBP) | 84-74-2 | 0.1 | % | 0.005 | ND |
| Dicyclohexyl Phthalates (DCHP) | 84-61-7 | 0.1 | % | 0.005 | ND |
| Di(2-ethylhexyl)phthalate/Bis(2-ethylhexyl) phthalate (DEHP) | 117-81-7 | 0.1 | % | 0.005 | ND |
| Dihexyl Phthalates (DHEXP/ DnHP) | 84-75-3 | 0.1 | % | 0.005 | ND |
| Diisobutyl Phthalates (DIBP) | 84-69-5 | 0.1 | % | 0.005 | ND |



Unless otherwise agreed in writing, this document is issued by the Company subject to its General Conditions of Service printed overleaf, available on request or accessible at <http://www.sgs.com/en/Terms-and-Conditions.aspx> and, for electronic format documents, subject to Terms and Conditions for Electronic Documents at <http://www.sgs.com/en/Terms-and-Conditions/Terms-e-Documents.aspx>. Attention is drawn to the limitation of liability, indemnification and jurisdiction issues defined therein. Any holder of this document is advised that information contained hereon reflects the Company's findings at the time of its intervention only and within the limits of Client's instructions, if any. The Company's sole responsibility is to its Client and this document does not exonerate parties to a transaction from exercising all their rights and obligations under the transaction documents. This document cannot be reproduced except in full, without prior written approval of the Company. Any unauthorized alteration, forgery or falsification of the content or appearance of this document is unlawful and offenders may be prosecuted to the fullest extent of the law. Unless otherwise stated the results shown in this test report refer only to the sample(s) tested and such sample(s) are retained for 30 days only.
Attention: To check the authenticity of testing /inspection report & certificate, please contact us at telephone: (86-755) 8307 1443, or email: CN.Doccheck@sgs.com

Test Report No.: CZHL2206005319TY **Date:** AUG. 09, 2022 Page 18 of 44

| Test Item(s) | CAS NO. | Limit | Unit | MDL | 035 |
|-----------------------------|---------------------------|-------|------|-------|-------------|
| Diisononyl Phthalate (DINP) | 28553-12-0 /68515-48-0 | 0.1 | % | 0.005 | ND |
| Dipentyl Phthalates (DPENP) | 131-18-0 | 0.1 | % | 0.005 | ND |
| Conclusion | | | | | PASS |

| Test Item(s) | CAS NO. | Limit | Unit | MDL | 036 |
|--|---------------------------|-------|------|-------|-------------|
| Benzyl Butyl Phthalate (BBP) | 85-68-7 | 0.1 | % | 0.005 | ND |
| Di-butyl Phthalate (DBP) | 84-74-2 | 0.1 | % | 0.005 | ND |
| Dicyclohexyl Phthalates (DCHP) | 84-61-7 | 0.1 | % | 0.005 | ND |
| Di(2-ethylhexyl)phthalate/Bis(2-ethylhexyl) phthalate (DEHP) | 117-81-7 | 0.1 | % | 0.005 | ND |
| Dihexyl Phthalates (DHEXP/ DnHP) | 84-75-3 | 0.1 | % | 0.005 | ND |
| Diisobutyl Phthalates (DIBP) | 84-69-5 | 0.1 | % | 0.005 | ND |
| Diisononyl Phthalate (DINP) | 28553-12-0 /68515-48-0 | 0.1 | % | 0.005 | ND |
| Dipentyl Phthalates (DPENP) | 131-18-0 | 0.1 | % | 0.005 | ND |
| Conclusion | | | | | PASS |

| Test Item(s) | CAS NO. | Limit | Unit | MDL | 037 |
|--|---------------------------|-------|------|-------|-------------|
| Benzyl Butyl Phthalate (BBP) | 85-68-7 | 0.1 | % | 0.005 | ND |
| Di-butyl Phthalate (DBP) | 84-74-2 | 0.1 | % | 0.005 | ND |
| Dicyclohexyl Phthalates (DCHP) | 84-61-7 | 0.1 | % | 0.005 | ND |
| Di(2-ethylhexyl)phthalate/Bis(2-ethylhexyl) phthalate (DEHP) | 117-81-7 | 0.1 | % | 0.005 | ND |
| Dihexyl Phthalates (DHEXP/ DnHP) | 84-75-3 | 0.1 | % | 0.005 | ND |
| Diisobutyl Phthalates (DIBP) | 84-69-5 | 0.1 | % | 0.005 | ND |
| Diisononyl Phthalate (DINP) | 28553-12-0 /68515-48-0 | 0.1 | % | 0.005 | ND |
| Dipentyl Phthalates (DPENP) | 131-18-0 | 0.1 | % | 0.005 | ND |
| Conclusion | | | | | PASS |



Unless otherwise agreed in writing, this document is issued by the Company subject to its General Conditions of Service printed overleaf, available on request or accessible at <http://www.sgs.com/en/Terms-and-Conditions.aspx> and, for electronic format documents, subject to Terms and Conditions for Electronic Documents at <http://www.sgs.com/en/Terms-and-Conditions/Terms-e-Documents.aspx>. Attention is drawn to the limitation of liability, indemnification and jurisdiction issues defined therein. Any holder of this document is advised that information contained hereon reflects the Company's findings at the time of its intervention only and within the limits of Client's instructions, if any. The Company's sole responsibility is to its Client and this document does not exonerate parties to a transaction from exercising all their rights and obligations under the transaction documents. This document cannot be reproduced except in full, without prior written approval of the Company. Any unauthorized alteration, forgery or falsification of the content or appearance of this document is unlawful and offenders may be prosecuted to the fullest extent of the law. Unless otherwise stated the results shown in this test report refer only to the sample(s) tested and such sample(s) are retained for 30 days only.

Attention: To check the authenticity of testing/inspection report & certificate, please contact us at telephone: (86-755) 8307 1443, or email: CN.Doccheck@sgs.com

SGS-CSTC Standards Technical Services (Changzhou) Co., Ltd.
Hardlines

Building 30, No. 47, Qingyang North Road, Tianning District, Changzhou, China 213017 t (86-519) 85587753
中国·常州·天宁区青洋北路47号30号楼 邮编: 213017 t (86-519) 85587753

www.sgs.com
www.sgs.china@sgs.com

| Test Item(s) | CAS NO. | Limit | Unit | MDL | 038 |
|--|---------------------------|-------|------|-------|-----|
| Benzyl Butyl Phthalate (BBP) | 85-68-7 | 0.1 | % | 0.005 | ND |
| Di-butyl Phthalate (DBP) | 84-74-2 | 0.1 | % | 0.005 | ND |
| Dicyclohexyl Phthalates (DCHP) | 84-61-7 | 0.1 | % | 0.005 | ND |
| Di(2-ethylhexyl)phthalate/Bis(2-ethylhexyl) phthalate (DEHP) | 117-81-7 | 0.1 | % | 0.005 | ND |
| Dihexyl Phthalates (DHEXP/ DnHP) | 84-75-3 | 0.1 | % | 0.005 | ND |
| Diisobutyl Phthalates (DIBP) | 84-69-5 | 0.1 | % | 0.005 | ND |
| Diisononyl Phthalate (DINP) | 28553-12-0 /68515-48-0 | 0.1 | % | 0.005 | ND |
| Dipentyl Phthalates (DPENP) | 131-18-0 | 0.1 | % | 0.005 | ND |

Conclusion **PASS**

| Test Item(s) | CAS NO. | Limit | Unit | MDL | 039 |
|--|---------------------------|-------|------|-------|-----|
| Benzyl Butyl Phthalate (BBP) | 85-68-7 | 0.1 | % | 0.005 | ND |
| Di-butyl Phthalate (DBP) | 84-74-2 | 0.1 | % | 0.005 | ND |
| Dicyclohexyl Phthalates (DCHP) | 84-61-7 | 0.1 | % | 0.005 | ND |
| Di(2-ethylhexyl)phthalate/Bis(2-ethylhexyl) phthalate (DEHP) | 117-81-7 | 0.1 | % | 0.005 | ND |
| Dihexyl Phthalates (DHEXP/ DnHP) | 84-75-3 | 0.1 | % | 0.005 | ND |
| Diisobutyl Phthalates (DIBP) | 84-69-5 | 0.1 | % | 0.005 | ND |
| Diisononyl Phthalate (DINP) | 28553-12-0 /68515-48-0 | 0.1 | % | 0.005 | ND |
| Dipentyl Phthalates (DPENP) | 131-18-0 | 0.1 | % | 0.005 | ND |

Conclusion **PASS**

| Test Item(s) | CAS NO. | Limit | Unit | MDL | 040 |
|--|----------|-------|------|-------|-----|
| Benzyl Butyl Phthalate (BBP) | 85-68-7 | 0.1 | % | 0.005 | ND |
| Di-butyl Phthalate (DBP) | 84-74-2 | 0.1 | % | 0.005 | ND |
| Dicyclohexyl Phthalates (DCHP) | 84-61-7 | 0.1 | % | 0.005 | ND |
| Di(2-ethylhexyl)phthalate/Bis(2-ethylhexyl) phthalate (DEHP) | 117-81-7 | 0.1 | % | 0.005 | ND |
| Dihexyl Phthalates (DHEXP/ DnHP) | 84-75-3 | 0.1 | % | 0.005 | ND |
| Diisobutyl Phthalates (DIBP) | 84-69-5 | 0.1 | % | 0.005 | ND |



Unless otherwise agreed in writing, this document is issued by the Company subject to its General Conditions of Service printed overleaf, available on request or accessible at <http://www.sgs.com/en/Terms-and-Conditions.aspx> and, for electronic format documents, subject to Terms and Conditions for Electronic Documents at <http://www.sgs.com/en/Terms-and-Conditions/Terms-e-Documents.aspx>. Attention is drawn to the limitation of liability, indemnification and jurisdiction issues defined therein. Any holder of this document is advised that information contained hereon reflects the Company's findings at the time of its intervention only and within the limits of Client's instructions, if any. The Company's sole responsibility is to its Client and this document does not exonerate parties to a transaction from exercising all their rights and obligations under the transaction documents. This document cannot be reproduced except in full, without prior written approval of the Company. Any unauthorized alteration, forgery or falsification of the content or appearance of this document is unlawful and offenders may be prosecuted to the fullest extent of the law. Unless otherwise stated the results shown in this test report refer only to the sample(s) tested and such sample(s) are retained for 30 days only.
Attention: To check the authenticity of testing / inspection report & certificate, please contact us at telephone: (86-755) 8307 1443, or email: CN.Doccheck@sgs.com

SGS-CSTC Standards Technical Services (Changzhou) Co., Ltd.
 Hardlines

Building 30, No. 47, Qingyang North Road, Tianning District, Changzhou, China 213017 t (86-519) 85587753
 中国·常州·天宁区青洋北路47号30号楼 邮编: 213017 t (86-519) 85587753

www.sgs.com.cn
 e sgs.china@sgs.com

| Test Item(s) | CAS NO. | Limit | Unit | MDL | 040 |
|-----------------------------|---------------------------|-------|------|-------|-------------|
| Diisononyl Phthalate (DINP) | 28553-12-0 /68515-48-0 | 0.1 | % | 0.005 | ND |
| Dipentyl Phthalates (DPENP) | 131-18-0 | 0.1 | % | 0.005 | ND |
| Conclusion | | | | | PASS |

| Test Item(s) | CAS NO. | Limit | Unit | MDL | 041 |
|--|---------------------------|-------|------|-------|-------------|
| Benzyl Butyl Phthalate (BBP) | 85-68-7 | 0.1 | % | 0.005 | ND |
| Di-butyl Phthalate (DBP) | 84-74-2 | 0.1 | % | 0.005 | ND |
| Dicyclohexyl Phthalates (DCHP) | 84-61-7 | 0.1 | % | 0.005 | ND |
| Di(2-ethylhexyl)phthalate/Bis(2-ethylhexyl) phthalate (DEHP) | 117-81-7 | 0.1 | % | 0.005 | ND |
| Dihexyl Phthalates (DHEXP/ DnHP) | 84-75-3 | 0.1 | % | 0.005 | ND |
| Diisobutyl Phthalates (DIBP) | 84-69-5 | 0.1 | % | 0.005 | ND |
| Diisononyl Phthalate (DINP) | 28553-12-0 /68515-48-0 | 0.1 | % | 0.005 | ND |
| Dipentyl Phthalates (DPENP) | 131-18-0 | 0.1 | % | 0.005 | ND |
| Conclusion | | | | | PASS |

Notes :

On October 27, 2017, the CPSC published the final rule in the Federal Register (82 FR 49938) to restrict phthalates in toys and child care articles under section 108 of the CPSIA, this final rule has in effect restricted a total of eight phthalates in children's toys and child care articles. It will become effective on April 25, 2018, and applies to toys and child care articles that are manufactured or imported from this date

Note: The testing was performed by SGS other internal laboratory.

7. US California Proposition 65- Lead content

Test Method : With reference to CPSC Test Method: CPSC-CH-E1003-09.1. Analysis was performed by AAS.

| Test Item(s) | Limit | Unit | MDL | 032 |
|-------------------|-------|-------|-----|-------------|
| Lead (Pb) | 90 | mg/kg | 20 | ND |
| Conclusion | | | | PASS |



Test Report No.: CZHL2206005319TY Date: AUG. 09, 2022 Page 21 of 44

| Test Item(s) | Limit | Unit | MDL | 033 |
|-------------------|-------|-------|-----|-------------|
| Lead (Pb) | 90 | mg/kg | 20 | ND |
| Conclusion | | | | PASS |

Notes :

- (1) The limit is referenced to the requirement stated in the County of Marin Case No. CIV-10-00626.
 - (2) The reference limit applied in testing is based on particular prop 65 settlements that are most similar to the tested product in the opinion of the lab. The testing in this report does not reflect a user's actual exposure to the tested chemical.
- A manufacturer or retailer that is not named in the referenced settlement is not bound by that settlement, and may choose to comply with Proposition 65 by clearly informing the consumer of potential exposure.

Test Method : With reference to CPSC Test Method: CPSC-CH-E1002-08.3. Analysis was performed by AAS.

| Test Item(s) | Limit | Unit | MDL | 027 |
|-------------------|-------|-------|-----|-------------|
| Lead (Pb) | 100 | mg/kg | 20 | ND |
| Conclusion | | | | PASS |

Notes :

- (1) The limit is referenced to the requirement stated in the County of San Francisco Superior Court, Case No. CGC-08-476552 and CGC-11-508435.
 - (2) The reference limit applied in testing is based on particular prop 65 settlements that are most similar to the tested product in the opinion of the lab. The testing in this report does not reflect a user's actual exposure to the tested chemical.
- A manufacturer or retailer that is not named in the referenced settlement is not bound by that settlement, and may choose to comply with Proposition 65 by clearly informing the consumer of potential exposure.

Test Method : With reference to CPSC-CH-E1002-08.3. Analysis was performed by AAS.



Unless otherwise agreed in writing, this document is issued by the Company subject to its General Conditions of Service printed overleaf, available on request or accessible at <http://www.sgs.com/en/Terms-and-Conditions.aspx> and, for electronic format documents, subject to Terms and Conditions for Electronic Documents at <http://www.sgs.com/en/Terms-and-Conditions/Terms-e-Documents.aspx>. Attention is drawn to the limitation of liability, indemnification and jurisdiction issues defined therein. Any holder of this document is advised that information contained hereon reflects the Company's findings at the time of its intervention only and within the limits of Client's instructions, if any. The Company's sole responsibility is to its Client and this document does not exonerate parties to a transaction from exercising all their rights and obligations under the transaction documents. This document cannot be reproduced except in full, without prior written approval of the Company. Any unauthorized alteration, forgery or falsification of the content or appearance of this document is unlawful and offenders may be prosecuted to the fullest extent of the law. Unless otherwise stated the results shown in this test report refer only to the sample(s) tested and such sample(s) are retained for 30 days only.

Attention: To check the authenticity of testing/inspection report & certificate, please contact us at telephone: (86-755) 8307 1443, or email: CN.Doccheck@sgs.com

SGS-CSTC Standards Technical Services (Changzhou) Co., Ltd.
Hardlines

Building 30, No. 47, Qingyang North Road, Tianming District, Changzhou, China 213017 t (86-519)85587753
中国·常州·天宁区青洋北路47号30号楼 邮编: 213017 t (86-519)85587753

[www.sgs.com.cn](http://www.sgs.com)
[e sgs.china@sgs.com](mailto:sgs.china@sgs.com)

Test Report

No.: CZHL2206005319TY

Date: AUG. 09, 2022

Page 22 of 44

| <u>Test Item(s)</u> | <u>Limit</u> | <u>Unit</u> | <u>MDL</u> | <u>025</u> |
|---------------------|--------------|-------------|------------|-------------|
| Lead (Pb) | 100 | mg/kg | 20 | ND |
| Conclusion | | | | PASS |

| <u>Test Item(s)</u> | <u>Limit</u> | <u>Unit</u> | <u>MDL</u> | <u>026</u> |
|---------------------|--------------|-------------|------------|-------------|
| Lead (Pb) | 100 | mg/kg | 20 | ND |
| Conclusion | | | | PASS |

| <u>Test Item(s)</u> | <u>Limit</u> | <u>Unit</u> | <u>MDL</u> | <u>034</u> |
|---------------------|--------------|-------------|------------|-------------|
| Lead (Pb) | 100 | mg/kg | 20 | ND |
| Conclusion | | | | PASS |

| <u>Test Item(s)</u> | <u>Limit</u> | <u>Unit</u> | <u>MDL</u> | <u>035</u> |
|---------------------|--------------|-------------|------------|-------------|
| Lead (Pb) | 100 | mg/kg | 20 | ND |
| Conclusion | | | | PASS |

| <u>Test Item(s)</u> | <u>Limit</u> | <u>Unit</u> | <u>MDL</u> | <u>036</u> |
|---------------------|--------------|-------------|------------|-------------|
| Lead (Pb) | 100 | mg/kg | 20 | ND |
| Conclusion | | | | PASS |

| <u>Test Item(s)</u> | <u>Limit</u> | <u>Unit</u> | <u>MDL</u> | <u>037</u> |
|---------------------|--------------|-------------|------------|-------------|
| Lead (Pb) | 100 | mg/kg | 20 | 46 |
| Conclusion | | | | PASS |

| <u>Test Item(s)</u> | <u>Limit</u> | <u>Unit</u> | <u>MDL</u> | <u>038</u> |
|---------------------|--------------|-------------|------------|-------------|
| Lead (Pb) | 100 | mg/kg | 20 | ND |
| Conclusion | | | | PASS |

| <u>Test Item(s)</u> | <u>Limit</u> | <u>Unit</u> | <u>MDL</u> | <u>039</u> |
|---------------------|--------------|-------------|------------|-------------|
| Lead (Pb) | 100 | mg/kg | 20 | ND |
| Conclusion | | | | PASS |

| <u>Test Item(s)</u> | <u>Limit</u> | <u>Unit</u> | <u>MDL</u> | <u>040</u> |
|---------------------|--------------|-------------|------------|-------------|
| Lead (Pb) | 100 | mg/kg | 20 | ND |
| Conclusion | | | | PASS |



Unless otherwise agreed in writing, this document is issued by the Company subject to its General Conditions of Service printed overleaf, available on request or accessible at <http://www.sgs.com/en/Terms-and-Conditions.aspx> and, for electronic format documents, subject to Terms and Conditions for Electronic Documents at <http://www.sgs.com/en/Terms-and-Conditions/Terms-e-Documents.aspx>. Attention is drawn to the limitation of liability, indemnification and jurisdiction issues defined therein. Any holder of this document is advised that information contained hereon reflects the Company's findings at the time of its intervention only and within the limits of Client's instructions, if any. The Company's sole responsibility is to its Client and this document does not exonerate parties to a transaction from exercising all their rights and obligations under the transaction documents. This document cannot be reproduced except in full, without prior written approval of the Company. Any unauthorized alteration, forgery or falsification of the content or appearance of this document is unlawful and offenders may be prosecuted to the fullest extent of the law. Unless otherwise stated the results shown in this test report refer only to the sample(s) tested and such sample(s) are retained for 30 days only.

Attention: To check the authenticity of testing/inspection report & certificate, please contact us at telephone: (86-755) 8307 1443, or email: CN.Doccheck@sgs.com
 Building 30, No. 47, Qingyang North Road, Tianming District, Changzhou, China 213017 t (86-519) 85587753 www.sgs.com.cn
 中国·常州·天宁区青洋北路47号30号楼 邮编: 213017 t (86-519) 85587753 e sgs.china@sgs.com

Test Report No.: CZHL2206005319TY **Date:** AUG. 09, 2022 Page 23 of 44

| Test Item(s) | Limit | Unit | MDL | 041 |
|-------------------|-------|-------|-----|-------------|
| Lead (Pb) | 100 | mg/kg | 20 | ND |
| Conclusion | | | | PASS |

Notes :

- (1) The limit is referenced to the requirement as stated in the County of San Francisco Superior Court, Case No. CGC-09- 489839 and County of Santa Clara Case No 110 CV 172362.
 - (2) The reference limit applied in testing is based on particular prop 65 settlements that are most similar to the tested product in the opinion of the lab. The testing in this report does not reflect a user's actual exposure to the tested chemical.
- A manufacturer or retailer that is not named in the referenced settlement is not bound by that settlement, and may choose to comply with Proposition 65 by clearly informing the consumer of potential exposure.

Test Method : With reference to CPSC Test Method: CPSC-CH-E1002-08.3. Analysis was performed by AAS.

| Test Item(s) | Limit | Unit | MDL | 028 |
|-------------------|-------|-------|-----|-------------|
| Lead (Pb) | 100 | mg/kg | 20 | ND |
| Conclusion | | | | PASS |

| Test Item(s) | Limit | Unit | MDL | 029 |
|-------------------|-------|-------|-----|-------------|
| Lead (Pb) | 100 | mg/kg | 20 | ND |
| Conclusion | | | | PASS |

| Test Item(s) | Limit | Unit | MDL | 030 |
|-------------------|-------|-------|-----|-------------|
| Lead (Pb) | 100 | mg/kg | 20 | ND |
| Conclusion | | | | PASS |

| Test Item(s) | Limit | Unit | MDL | 031 |
|-------------------|-------|-------|-----|-------------|
| Lead (Pb) | 100 | mg/kg | 20 | ND |
| Conclusion | | | | PASS |

Notes :

- (1) The maximum permissible limits are quoted from requirement as stated by County of San



Unless otherwise agreed in writing, this document is issued by the Company subject to its General Conditions of Service printed overleaf, available on request or accessible at <http://www.sgs.com/en/Terms-and-Conditions.aspx> and, for electronic format documents, subject to Terms and Conditions for Electronic Documents at <http://www.sgs.com/en/Terms-and-Conditions/Terms-e-Documents.aspx>. Attention is drawn to the limitation of liability, indemnification and jurisdiction issues defined therein. Any holder of this document is advised that information contained hereon reflects the Company's findings at the time of its intervention only and within the limits of Client's instructions, if any. The Company's sole responsibility is to its Client and this document does not exonerate parties to a transaction from exercising all their rights and obligations under the transaction documents. This document cannot be reproduced except in full, without prior written approval of the Company. Any unauthorized alteration, forgery or falsification of the content or appearance of this document is unlawful and offenders may be prosecuted to the fullest extent of the law. Unless otherwise stated the results shown in this test report refer only to the sample(s) tested and such sample(s) are retained for 30 days only.

Attention: To check the authenticity of testing/inspection report & certificate, please contact us at telephone: (86-755) 8307 1443, or email: CN.Doccheck@sgs.com

SGS-CSTC Standards Technical Services (Changzhou) Co., Ltd.
Hardlines

Building 30, No. 47, Qingyang North Road, Tianning District, Changzhou, China 213017 t (86-519)85587753
中国·常州·天宁区青洋北路47号30号楼 邮编: 213017 t (86-519)85587753

www.sgs.com
sgs.china@sgs.com

Mateo Case No. CIV 512114.

(2) The reference limit applied in testing is based on particular California Proposition 65 settlements that are most similar to the tested product in the opinion of the lab. The testing in this report does not reflect a user's actual exposure to the tested chemical.

A manufacturer or retailer that is not named in the referenced settlement is not bound by that settlement, and may choose to comply with California Proposition 65 by clearly informing the consumer of potential exposure.

Note: The testing was performed by SGS other internal laboratory.

8. US California Proposition 65- Cadmium content

Test Method : With reference to CPSC Test Method: CPSC-CH-E1002-08.3. Analysis was performed by AAS.

| | | | | |
|---------------------|--------------|-------------|------------|-------------|
| <u>Test Item(s)</u> | <u>Limit</u> | <u>Unit</u> | <u>MDL</u> | <u>025</u> |
| Cadmium (Cd) | 300 | mg/kg | 5 | ND |
| Conclusion | | | | PASS |

| | | | | |
|---------------------|--------------|-------------|------------|-------------|
| <u>Test Item(s)</u> | <u>Limit</u> | <u>Unit</u> | <u>MDL</u> | <u>026</u> |
| Cadmium (Cd) | 300 | mg/kg | 5 | ND |
| Conclusion | | | | PASS |

| | | | | |
|---------------------|--------------|-------------|------------|-------------|
| <u>Test Item(s)</u> | <u>Limit</u> | <u>Unit</u> | <u>MDL</u> | <u>027</u> |
| Cadmium (Cd) | 300 | mg/kg | 5 | ND |
| Conclusion | | | | PASS |

| | | | | |
|---------------------|--------------|-------------|------------|-------------|
| <u>Test Item(s)</u> | <u>Limit</u> | <u>Unit</u> | <u>MDL</u> | <u>028</u> |
| Cadmium (Cd) | 300 | mg/kg | 5 | ND |
| Conclusion | | | | PASS |

| | | | | |
|---------------------|--------------|-------------|------------|-------------|
| <u>Test Item(s)</u> | <u>Limit</u> | <u>Unit</u> | <u>MDL</u> | <u>029</u> |
| Cadmium (Cd) | 300 | mg/kg | 5 | ND |
| Conclusion | | | | PASS |



Unless otherwise agreed in writing, this document is issued by the Company subject to its General Conditions of Service printed overleaf, available on request or accessible at <http://www.sgs.com/en/Terms-and-Conditions.aspx> and, for electronic format documents, subject to Terms and Conditions for Electronic Documents at <http://www.sgs.com/en/Terms-and-Conditions/Terms-e-Documents.aspx>. Attention is drawn to the limitation of liability, indemnification and jurisdiction issues defined therein. Any holder of this document is advised that information contained hereon reflects the Company's findings at the time of its intervention only and within the limits of Client's instructions, if any. The Company's sole responsibility is to its Client and this document does not exonerate parties to a transaction from exercising all their rights and obligations under the transaction documents. This document cannot be reproduced except in full, without prior written approval of the Company. Any unauthorized alteration, forgery or falsification of the content or appearance of this document is unlawful and offenders may be prosecuted to the fullest extent of the law. Unless otherwise stated the results shown in this test report refer only to the sample(s) tested and such sample(s) are retained for 30 days only.
Attention: To check the authenticity of testing/inspection report & certificate, please contact us at telephone: (86-755) 8307 1443, or email: CN.Doccheck@sgs.com
 Building 30, No. 47, Qingyang North Road, Tianning District, Changzhou, China 213017 t (86-519)85587753 www.sgs.com.cn
 中国·常州·天宁区青洋北路47号30号楼 邮编: 213017 t (86-519)85587753 e sgs.china@sgs.com

Test Report

No.: CZHL2206005319TY

Date: AUG. 09, 2022

Page 25 of 44

| <u>Test Item(s)</u> | <u>Limit</u> | <u>Unit</u> | <u>MDL</u> | <u>030</u> |
|---------------------|--------------|-------------|------------|-------------|
| Cadmium (Cd) | 300 | mg/kg | 5 | ND |
| Conclusion | | | | PASS |

| <u>Test Item(s)</u> | <u>Limit</u> | <u>Unit</u> | <u>MDL</u> | <u>031</u> |
|---------------------|--------------|-------------|------------|-------------|
| Cadmium (Cd) | 300 | mg/kg | 5 | ND |
| Conclusion | | | | PASS |

| <u>Test Item(s)</u> | <u>Limit</u> | <u>Unit</u> | <u>MDL</u> | <u>034</u> |
|---------------------|--------------|-------------|------------|-------------|
| Cadmium (Cd) | 300 | mg/kg | 5 | ND |
| Conclusion | | | | PASS |

| <u>Test Item(s)</u> | <u>Limit</u> | <u>Unit</u> | <u>MDL</u> | <u>035</u> |
|---------------------|--------------|-------------|------------|-------------|
| Cadmium (Cd) | 300 | mg/kg | 5 | ND |
| Conclusion | | | | PASS |

| <u>Test Item(s)</u> | <u>Limit</u> | <u>Unit</u> | <u>MDL</u> | <u>036</u> |
|---------------------|--------------|-------------|------------|-------------|
| Cadmium (Cd) | 300 | mg/kg | 5 | ND |
| Conclusion | | | | PASS |

| <u>Test Item(s)</u> | <u>Limit</u> | <u>Unit</u> | <u>MDL</u> | <u>037</u> |
|---------------------|--------------|-------------|------------|-------------|
| Cadmium (Cd) | 300 | mg/kg | 5 | ND |
| Conclusion | | | | PASS |

| <u>Test Item(s)</u> | <u>Limit</u> | <u>Unit</u> | <u>MDL</u> | <u>038</u> |
|---------------------|--------------|-------------|------------|-------------|
| Cadmium (Cd) | 300 | mg/kg | 5 | ND |
| Conclusion | | | | PASS |

| <u>Test Item(s)</u> | <u>Limit</u> | <u>Unit</u> | <u>MDL</u> | <u>039</u> |
|---------------------|--------------|-------------|------------|-------------|
| Cadmium (Cd) | 300 | mg/kg | 5 | ND |
| Conclusion | | | | PASS |

| <u>Test Item(s)</u> | <u>Limit</u> | <u>Unit</u> | <u>MDL</u> | <u>040</u> |
|---------------------|--------------|-------------|------------|-------------|
| Cadmium (Cd) | 300 | mg/kg | 5 | ND |
| Conclusion | | | | PASS |



Unless otherwise agreed in writing, this document is issued by the Company subject to its General Conditions of Service printed overleaf, available on request or accessible at <http://www.sgs.com/en/Terms-and-Conditions.aspx> and, for electronic format documents, subject to Terms and Conditions for Electronic Documents at <http://www.sgs.com/en/Terms-and-Conditions/Terms-e-Documents.aspx>. Attention is drawn to the limitation of liability, indemnification and jurisdiction issues defined therein. Any holder of this document is advised that information contained hereon reflects the Company's findings at the time of its intervention only and within the limits of Client's instructions, if any. The Company's sole responsibility is to its Client and this document does not exonerate parties to a transaction from exercising all their rights and obligations under the transaction documents. This document cannot be reproduced except in full, without prior written approval of the Company. Any unauthorized alteration, forgery or falsification of the content or appearance of this document is unlawful and offenders may be prosecuted to the fullest extent of the law. Unless otherwise stated the results shown in this test report refer only to the sample(s) tested and such sample(s) are retained for 30 days only.

Attention: To check the authenticity of testing/inspection report & certificate, please contact us at telephone: (86-755) 8307 1443, or email: CN.Doccheck@sgs.com

SGS-CSTC Standards Technical Services (Changzhou) Co., Ltd.
Hardlines

Building 30, No. 47, Qingyang North Road, Tianming District, Changzhou, China 213017 t (86-519) 85587753
中国·常州·天宁区青洋北路47号30号楼 邮编: 213017 t (86-519) 85587753

www.sgs.com
sgs.china@sgs.com

Test Report No.: CZHL2206005319TY **Date:** AUG. 09, 2022 Page 26 of 44

| Test Item(s) | Limit | Unit | MDL | 041 |
|-------------------|-------|-------|-----|-------------|
| Cadmium (Cd) | 300 | mg/kg | 5 | ND |
| Conclusion | | | | PASS |

Notes :

- (1) The limit is referenced to the cadmium requirement stated in the County of Alameda Superior Court, RG-10-514803
 - (2) The reference limit applied in testing is based on particular prop 65 settlements that are most similar to the tested product in the opinion of the lab. The testing in this report does not reflect a user's actual exposure to the tested chemical.
- A manufacturer or retailer that is not named in the referenced settlement is not bound by that settlement, and may choose to comply with Proposition 65 by clearly informing the consumer of potential exposure.

Test Method : With reference to CPSC Test Method: CPSC-CH-E1003-09.1. Analysis was performed by AAS.

| Test Item(s) | Limit | Unit | MDL | 032 |
|-------------------|-------|-------|-----|-------------|
| Cadmium (Cd) | 300 | mg/kg | 5 | ND |
| Conclusion | | | | PASS |

| Test Item(s) | Limit | Unit | MDL | 033 |
|-------------------|-------|-------|-----|-------------|
| Cadmium (Cd) | 300 | mg/kg | 5 | ND |
| Conclusion | | | | PASS |

Notes :

- (1) The limit is referenced to the cadmium requirement stated in the County of Alameda Superior Court, RG-10-514803
 - (2) The reference limit applied in testing is based on particular prop 65 settlements that are most similar to the tested product in the opinion of the lab. The testing in this report does not reflect a user's actual exposure to the tested chemical.
- A manufacturer or retailer that is not named in the referenced settlement is not bound by that settlement, and may choose to comply with Proposition 65 by clearly informing the consumer of potential exposure.

Note: The testing was performed by SGS other internal laboratory.



Unless otherwise agreed in writing, this document is issued by the Company subject to its General Conditions of Service printed overleaf, available on request or accessible at <http://www.sgs.com/en/Terms-and-Conditions.aspx> and, for electronic format documents, subject to Terms and Conditions for Electronic Documents at <http://www.sgs.com/en/Terms-and-Conditions/Terms-e-Documents.aspx>. Attention is drawn to the limitation of liability, indemnification and jurisdiction issues defined therein. Any holder of this document is advised that information contained hereon reflects the Company's findings at the time of its intervention only and within the limits of Client's instructions, if any. The Company's sole responsibility is to its Client and this document does not exonerate parties to a transaction from exercising all their rights and obligations under the transaction documents. This document cannot be reproduced except in full, without prior written approval of the Company. Any unauthorized alteration, forgery or falsification of the content or appearance of this document is unlawful and offenders may be prosecuted to the fullest extent of the law. Unless otherwise stated the results shown in this test report refer only to the sample(s) tested and such sample(s) are retained for 30 days only.
Attention: To check the authenticity of testing / inspection report & certificate, please contact us at telephone: (86-755) 8307 1443, or email: CN.Doccheck@sgs.com
 Building 30, No. 47, Qingyang North Road, Tianning District, Changzhou, China 213017 t (86-519)85587753 www.sgs.com.cn
 中国·常州·天宁区青洋北路47号30号楼 邮编: 213017 t (86-519)85587753 e sgs.china@sgs.com

9. US California Proposition 65- Phthalate

Test Method : With reference to CPSC-CH-C1001-09.4(2018), analysis was performed by GC-MS.

| Test Item(s) | CAS NO. | Limit | Unit | MDL | 025 |
|--|---------------------------|-------|-------|-----|-----|
| Dibutyl Phthalate (DBP) | 84-74-2 | 1000 | mg/kg | 50 | ND |
| Benzylbutyl Phthalate (BBP) | 85-68-7 | 1000 | mg/kg | 50 | ND |
| Di(2-ethylhexyl)phthalate/Bis(2-ethylhexyl) phthalate (DEHP) | 117-81-7 | 1000 | mg/kg | 50 | ND |
| Diisononyl Phthalate (DINP) | 28553-12-0 /68515-48-0 | 1000 | mg/kg | 50 | ND |
| Di-n-octyl Phthalate (DNOP) | 117-84-0 | 1000 | mg/kg | 50 | ND |
| Diisodecyl Phthalate (DIDP) | 26761-40-0 /68515-49-1 | 1000 | mg/kg | 50 | ND |
| Dicyclohexyl Phthalates (DCHP) | 84-61-7 | 1000 | mg/kg | 50 | ND |
| Diisobutyl Phthalates (DIBP) | 84-69-5 | 1000 | mg/kg | 50 | ND |
| Di-n-pentyl Phthalates (DPENP) | 131-18-0 | 1000 | mg/kg | 50 | ND |
| Di-n-hexyl Phthalate (DnHP) | 84-75-3 | 1000 | mg/kg | 50 | ND |

Conclusion **PASS**

| Test Item(s) | CAS NO. | Limit | Unit | MDL | 026 |
|--|---------------------------|-------|-------|-----|-----|
| Dibutyl Phthalate (DBP) | 84-74-2 | 1000 | mg/kg | 50 | ND |
| Benzylbutyl Phthalate (BBP) | 85-68-7 | 1000 | mg/kg | 50 | ND |
| Di(2-ethylhexyl)phthalate/Bis(2-ethylhexyl) phthalate (DEHP) | 117-81-7 | 1000 | mg/kg | 50 | ND |
| Diisononyl Phthalate (DINP) | 28553-12-0 /68515-48-0 | 1000 | mg/kg | 50 | ND |
| Di-n-octyl Phthalate (DNOP) | 117-84-0 | 1000 | mg/kg | 50 | ND |
| Diisodecyl Phthalate (DIDP) | 26761-40-0 /68515-49-1 | 1000 | mg/kg | 50 | ND |
| Dicyclohexyl Phthalates (DCHP) | 84-61-7 | 1000 | mg/kg | 50 | ND |
| Diisobutyl Phthalates (DIBP) | 84-69-5 | 1000 | mg/kg | 50 | ND |
| Di-n-pentyl Phthalates (DPENP) | 131-18-0 | 1000 | mg/kg | 50 | ND |
| Di-n-hexyl Phthalate (DnHP) | 84-75-3 | 1000 | mg/kg | 50 | ND |

Conclusion **PASS**



Unless otherwise agreed in writing, this document is issued by the Company subject to its General Conditions of Service printed overleaf, available on request or accessible at <http://www.sgs.com/en/Terms-and-Conditions.aspx> and, for electronic format documents, subject to Terms and Conditions for Electronic Documents at <http://www.sgs.com/en/Terms-and-Conditions/Terms-e-Document.aspx>. Attention is drawn to the limitation of liability, indemnification and jurisdiction issues defined therein. Any holder of this document is advised that information contained hereon reflects the Company's findings at the time of its intervention only and within the limits of Client's instructions, if any. The Company's sole responsibility is to its Client and this document does not exonerate parties to a transaction from exercising all their rights and obligations under the transaction documents. This document cannot be reproduced except in full, without prior written approval of the Company. Any unauthorized alteration, forgery or falsification of the content or appearance of this document is unlawful and offenders may be prosecuted to the fullest extent of the law. Unless otherwise stated the results shown in this test report refer only to the sample(s) tested and such sample(s) are retained for 30 days only.
Attention: To check the authenticity of testing/inspection report & certificate, please contact us at telephone: (86-755) 8307 1443, or email: CN.Doccheck@sgs.com
 Building 30, No. 47, Qingyang North Road, Tianning District, Changzhou, China 213017 t (86-519)85587753 www.sgs.com.cn
 中国·常州·天宁区青洋北路47号30号楼 邮编: 213017 t (86-519)85587753 e sgs.china@sgs.com

| <u>Test Item(s)</u> | <u>CAS NO.</u> | <u>Limit</u> | <u>Unit</u> | <u>MDL</u> | <u>032</u> |
|--|---------------------------|--------------|-------------|------------|------------|
| Dibutyl Phthalate (DBP) | 84-74-2 | 1000 | mg/kg | 50 | ND |
| Benzylbutyl Phthalate (BBP) | 85-68-7 | 1000 | mg/kg | 50 | ND |
| Di(2-ethylhexyl)phthalate/Bis(2-ethylhexyl) phthalate (DEHP) | 117-81-7 | 1000 | mg/kg | 50 | ND |
| Diisononyl Phthalate (DINP) | 28553-12-0 /68515-48-0 | 1000 | mg/kg | 50 | ND |
| Di-n-octyl Phthalate (DNOP) | 117-84-0 | 1000 | mg/kg | 50 | ND |
| Diisodecyl Phthalate (DIDP) | 26761-40-0 /68515-49-1 | 1000 | mg/kg | 50 | ND |
| Dicyclohexyl Phthalates (DCHP) | 84-61-7 | 1000 | mg/kg | 50 | ND |
| Diisobutyl Phthalates (DIBP) | 84-69-5 | 1000 | mg/kg | 50 | ND |
| Di-n-pentyl Phthalates (DPENP) | 131-18-0 | 1000 | mg/kg | 50 | ND |
| Di-n-hexyl Phthalate (DnHP) | 84-75-3 | 1000 | mg/kg | 50 | ND |

Conclusion **PASS**

| <u>Test Item(s)</u> | <u>CAS NO.</u> | <u>Limit</u> | <u>Unit</u> | <u>MDL</u> | <u>033</u> |
|--|---------------------------|--------------|-------------|------------|------------|
| Dibutyl Phthalate (DBP) | 84-74-2 | 1000 | mg/kg | 50 | ND |
| Benzylbutyl Phthalate (BBP) | 85-68-7 | 1000 | mg/kg | 50 | ND |
| Di(2-ethylhexyl)phthalate/Bis(2-ethylhexyl) phthalate (DEHP) | 117-81-7 | 1000 | mg/kg | 50 | ND |
| Diisononyl Phthalate (DINP) | 28553-12-0 /68515-48-0 | 1000 | mg/kg | 50 | ND |
| Di-n-octyl Phthalate (DNOP) | 117-84-0 | 1000 | mg/kg | 50 | ND |
| Diisodecyl Phthalate (DIDP) | 26761-40-0 /68515-49-1 | 1000 | mg/kg | 50 | ND |
| Dicyclohexyl Phthalates (DCHP) | 84-61-7 | 1000 | mg/kg | 50 | ND |
| Diisobutyl Phthalates (DIBP) | 84-69-5 | 1000 | mg/kg | 50 | ND |
| Di-n-pentyl Phthalates (DPENP) | 131-18-0 | 1000 | mg/kg | 50 | ND |
| Di-n-hexyl Phthalate (DnHP) | 84-75-3 | 1000 | mg/kg | 50 | ND |

Conclusion **PASS**



Unless otherwise agreed in writing, this document is issued by the Company subject to its General Conditions of Service printed overleaf, available on request or accessible at <http://www.sgs.com/en/Terms-and-Conditions.aspx> and, for electronic format documents, subject to Terms and Conditions for Electronic Documents at <http://www.sgs.com/en/Terms-and-Conditions/Terms-e-Documents.aspx>. Attention is drawn to the limitation of liability, indemnification and jurisdiction issues defined therein. Any holder of this document is advised that information contained hereon reflects the Company's findings at the time of its intervention only and within the limits of Client's instructions, if any. The Company's sole responsibility is to its Client and this document does not exonerate parties to a transaction from exercising all their rights and obligations under the transaction documents. This document cannot be reproduced except in full, without prior written approval of the Company. Any unauthorized alteration, forgery or falsification of the content or appearance of this document is unlawful and offenders may be prosecuted to the fullest extent of the law. Unless otherwise stated the results shown in this test report refer only to the sample(s) tested and such sample(s) are retained for 30 days only.
Attention: To check the authenticity of testing/inspection report & certificate, please contact us at telephone: (86-755) 8307 1443, or email: CN.Doccheck@sgs.com
 Building 30, No. 47, Qingyang North Road, Tianning District, Changzhou, China 213017 t (86-519) 85587753 www.sgs.com.cn
 中国·常州·天宁区青洋北路47号30号楼 邮编: 213017 t (86-519) 85587753 e sgs.china@sgs.com

Test Report

No.: CZHL2206005319TY

Date: AUG. 09, 2022

Page 29 of 44

| Test Item(s) | CAS NO. | Limit | Unit | MDL | 034 |
|--|---------------------------|-------|-------|-----|-----|
| Dibutyl Phthalate (DBP) | 84-74-2 | 1000 | mg/kg | 50 | ND |
| Benzylbutyl Phthalate (BBP) | 85-68-7 | 1000 | mg/kg | 50 | ND |
| Di(2-ethylhexyl)phthalate/Bis(2-ethylhexyl) phthalate (DEHP) | 117-81-7 | 1000 | mg/kg | 50 | ND |
| Diisononyl Phthalate (DINP) | 28553-12-0 /68515-48-0 | 1000 | mg/kg | 50 | ND |
| Di-n-octyl Phthalate (DNOP) | 117-84-0 | 1000 | mg/kg | 50 | ND |
| Diisodecyl Phthalate (DIDP) | 26761-40-0 /68515-49-1 | 1000 | mg/kg | 50 | ND |
| Dicyclohexyl Phthalates (DCHP) | 84-61-7 | 1000 | mg/kg | 50 | ND |
| Diisobutyl Phthalates (DIBP) | 84-69-5 | 1000 | mg/kg | 50 | ND |
| Di-n-pentyl Phthalates (DPENP) | 131-18-0 | 1000 | mg/kg | 50 | ND |
| Di-n-hexyl Phthalate (DnHP) | 84-75-3 | 1000 | mg/kg | 50 | ND |

Conclusion

PASS

| Test Item(s) | CAS NO. | Limit | Unit | MDL | 035 |
|--|---------------------------|-------|-------|-----|-----|
| Dibutyl Phthalate (DBP) | 84-74-2 | 1000 | mg/kg | 50 | ND |
| Benzylbutyl Phthalate (BBP) | 85-68-7 | 1000 | mg/kg | 50 | ND |
| Di(2-ethylhexyl)phthalate/Bis(2-ethylhexyl) phthalate (DEHP) | 117-81-7 | 1000 | mg/kg | 50 | ND |
| Diisononyl Phthalate (DINP) | 28553-12-0 /68515-48-0 | 1000 | mg/kg | 50 | ND |
| Di-n-octyl Phthalate (DNOP) | 117-84-0 | 1000 | mg/kg | 50 | ND |
| Diisodecyl Phthalate (DIDP) | 26761-40-0 /68515-49-1 | 1000 | mg/kg | 50 | ND |
| Dicyclohexyl Phthalates (DCHP) | 84-61-7 | 1000 | mg/kg | 50 | ND |
| Diisobutyl Phthalates (DIBP) | 84-69-5 | 1000 | mg/kg | 50 | ND |
| Di-n-pentyl Phthalates (DPENP) | 131-18-0 | 1000 | mg/kg | 50 | ND |
| Di-n-hexyl Phthalate (DnHP) | 84-75-3 | 1000 | mg/kg | 50 | ND |

Conclusion

PASS



Unless otherwise agreed in writing, this document is issued by the Company subject to its General Conditions of Service printed overleaf, available on request or accessible at <http://www.sgs.com/en/Terms-and-Conditions.aspx> and, for electronic format documents, subject to Terms and Conditions for Electronic Documents at <http://www.sgs.com/en/Terms-and-Conditions/Terms-e-Documents.aspx>. Attention is drawn to the limitation of liability, indemnification and jurisdiction issues defined therein. Any holder of this document is advised that information contained hereon reflects the Company's findings at the time of its intervention only and within the limits of Client's instructions, if any. The Company's sole responsibility is to its Client and this document does not exonerate parties to a transaction from exercising all their rights and obligations under the transaction documents. This document cannot be reproduced except in full, without prior written approval of the Company. Any unauthorized alteration, forgery or falsification of the content or appearance of this document is unlawful and offenders may be prosecuted to the fullest extent of the law. Unless otherwise stated the results shown in this test report refer only to the sample(s) tested and such sample(s) are retained for 30 days only.

Attention: To check the authenticity of testing/inspection report & certificate, please contact us at telephone: (86-755) 8307 1443, or email: CN.Doccheck@sgs.com

SGS-CSTC Standards Technical Services (Changzhou) Co., Ltd.
Hardlines

Building 30, No. 47, Qingyang North Road, Tianning District, Changzhou, China 213017 t (86-519) 85587753
中国·常州·天宁区青洋北路47号30号楼 邮编: 213017 t (86-519) 85587753

www.sgs.com
sgs.china@sgs.com

Test Report

No.: CZHL2206005319TY

Date: AUG. 09, 2022

Page 30 of 44

| Test Item(s) | CAS NO. | Limit | Unit | MDL | 036 |
|--|---------------------------|-------|-------|-----|-----|
| Dibutyl Phthalate (DBP) | 84-74-2 | 1000 | mg/kg | 50 | ND |
| Benzylbutyl Phthalate (BBP) | 85-68-7 | 1000 | mg/kg | 50 | ND |
| Di(2-ethylhexyl)phthalate/Bis(2-ethylhexyl) phthalate (DEHP) | 117-81-7 | 1000 | mg/kg | 50 | ND |
| Diisononyl Phthalate (DINP) | 28553-12-0 /68515-48-0 | 1000 | mg/kg | 50 | ND |
| Di-n-octyl Phthalate (DNOP) | 117-84-0 | 1000 | mg/kg | 50 | ND |
| Diisodecyl Phthalate (DIDP) | 26761-40-0 /68515-49-1 | 1000 | mg/kg | 50 | ND |
| Dicyclohexyl Phthalates (DCHP) | 84-61-7 | 1000 | mg/kg | 50 | ND |
| Diisobutyl Phthalates (DIBP) | 84-69-5 | 1000 | mg/kg | 50 | ND |
| Di-n-pentyl Phthalates (DPENP) | 131-18-0 | 1000 | mg/kg | 50 | ND |
| Di-n-hexyl Phthalate (DnHP) | 84-75-3 | 1000 | mg/kg | 50 | ND |

Conclusion

PASS

| Test Item(s) | CAS NO. | Limit | Unit | MDL | 037 |
|--|---------------------------|-------|-------|-----|-----|
| Dibutyl Phthalate (DBP) | 84-74-2 | 1000 | mg/kg | 50 | ND |
| Benzylbutyl Phthalate (BBP) | 85-68-7 | 1000 | mg/kg | 50 | ND |
| Di(2-ethylhexyl)phthalate/Bis(2-ethylhexyl) phthalate (DEHP) | 117-81-7 | 1000 | mg/kg | 50 | ND |
| Diisononyl Phthalate (DINP) | 28553-12-0 /68515-48-0 | 1000 | mg/kg | 50 | ND |
| Di-n-octyl Phthalate (DNOP) | 117-84-0 | 1000 | mg/kg | 50 | ND |
| Diisodecyl Phthalate (DIDP) | 26761-40-0 /68515-49-1 | 1000 | mg/kg | 50 | ND |
| Dicyclohexyl Phthalates (DCHP) | 84-61-7 | 1000 | mg/kg | 50 | ND |
| Diisobutyl Phthalates (DIBP) | 84-69-5 | 1000 | mg/kg | 50 | ND |
| Di-n-pentyl Phthalates (DPENP) | 131-18-0 | 1000 | mg/kg | 50 | ND |
| Di-n-hexyl Phthalate (DnHP) | 84-75-3 | 1000 | mg/kg | 50 | ND |

Conclusion

PASS



Unless otherwise agreed in writing, this document is issued by the Company subject to its General Conditions of Service printed overleaf, available on request or accessible at <http://www.sgs.com/en/Terms-and-Conditions.aspx> and, for electronic format documents, subject to Terms and Conditions for Electronic Documents at <http://www.sgs.com/en/Terms-and-Conditions/Terms-e-Documents.aspx>. Attention is drawn to the limitation of liability, indemnification and jurisdiction issues defined therein. Any holder of this document is advised that information contained hereon reflects the Company's findings at the time of its intervention only and within the limits of Client's instructions, if any. The Company's sole responsibility is to its Client and this document does not exonerate parties to a transaction from exercising all their rights and obligations under the transaction documents. This document cannot be reproduced except in full, without prior written approval of the Company. Any unauthorized alteration, forgery or falsification of the content or appearance of this document is unlawful and offenders may be prosecuted to the fullest extent of the law. Unless otherwise stated the results shown in this test report refer only to the sample(s) tested and such sample(s) are retained for 30 days only.

Attention: To check the authenticity of testing/inspection report & certificate, please contact us at telephone: (86-755) 8307 1443, or email: CN.Doccheck@sgs.com

| <u>Test Item(s)</u> | <u>CAS NO.</u> | <u>Limit</u> | <u>Unit</u> | <u>MDL</u> | <u>038</u> |
|--|---------------------------|--------------|-------------|------------|------------|
| Dibutyl Phthalate (DBP) | 84-74-2 | 1000 | mg/kg | 50 | ND |
| Benzylbutyl Phthalate (BBP) | 85-68-7 | 1000 | mg/kg | 50 | ND |
| Di(2-ethylhexyl)phthalate/Bis(2-ethylhexyl) phthalate (DEHP) | 117-81-7 | 1000 | mg/kg | 50 | ND |
| Diisononyl Phthalate (DINP) | 28553-12-0 /68515-48-0 | 1000 | mg/kg | 50 | ND |
| Di-n-octyl Phthalate (DNOP) | 117-84-0 | 1000 | mg/kg | 50 | ND |
| Diisodecyl Phthalate (DIDP) | 26761-40-0 /68515-49-1 | 1000 | mg/kg | 50 | ND |
| Dicyclohexyl Phthalates (DCHP) | 84-61-7 | 1000 | mg/kg | 50 | ND |
| Diisobutyl Phthalates (DIBP) | 84-69-5 | 1000 | mg/kg | 50 | ND |
| Di-n-pentyl Phthalates (DPENP) | 131-18-0 | 1000 | mg/kg | 50 | ND |
| Di-n-hexyl Phthalate (DnHP) | 84-75-3 | 1000 | mg/kg | 50 | ND |

Conclusion **PASS**

| <u>Test Item(s)</u> | <u>CAS NO.</u> | <u>Limit</u> | <u>Unit</u> | <u>MDL</u> | <u>039</u> |
|--|---------------------------|--------------|-------------|------------|------------|
| Dibutyl Phthalate (DBP) | 84-74-2 | 1000 | mg/kg | 50 | ND |
| Benzylbutyl Phthalate (BBP) | 85-68-7 | 1000 | mg/kg | 50 | ND |
| Di(2-ethylhexyl)phthalate/Bis(2-ethylhexyl) phthalate (DEHP) | 117-81-7 | 1000 | mg/kg | 50 | ND |
| Diisononyl Phthalate (DINP) | 28553-12-0 /68515-48-0 | 1000 | mg/kg | 50 | ND |
| Di-n-octyl Phthalate (DNOP) | 117-84-0 | 1000 | mg/kg | 50 | ND |
| Diisodecyl Phthalate (DIDP) | 26761-40-0 /68515-49-1 | 1000 | mg/kg | 50 | ND |
| Dicyclohexyl Phthalates (DCHP) | 84-61-7 | 1000 | mg/kg | 50 | ND |
| Diisobutyl Phthalates (DIBP) | 84-69-5 | 1000 | mg/kg | 50 | ND |
| Di-n-pentyl Phthalates (DPENP) | 131-18-0 | 1000 | mg/kg | 50 | ND |
| Di-n-hexyl Phthalate (DnHP) | 84-75-3 | 1000 | mg/kg | 50 | ND |

Conclusion **PASS**



Unless otherwise agreed in writing, this document is issued by the Company subject to its General Conditions of Service printed overleaf, available on request or accessible at <http://www.sgs.com/en/Terms-and-Conditions.aspx> and, for electronic format documents, subject to Terms and Conditions for Electronic Documents at <http://www.sgs.com/en/Terms-and-Conditions/Terms-e-Documents.aspx>. Attention is drawn to the limitation of liability, indemnification and jurisdiction issues defined therein. Any holder of this document is advised that information contained hereon reflects the Company's findings at the time of its intervention only and within the limits of Client's instructions, if any. The Company's sole responsibility is to its Client and this document does not exonerate parties to a transaction from exercising all their rights and obligations under the transaction documents. This document cannot be reproduced except in full, without prior written approval of the Company. Any unauthorized alteration, forgery or falsification of the content or appearance of this document is unlawful and offenders may be prosecuted to the fullest extent of the law. Unless otherwise stated the results shown in this test report refer only to the sample(s) tested and such sample(s) are retained for 30 days only.
Attention: To check the authenticity of testing/inspection report & certificate, please contact us at telephone: (86-755) 8307 1443, or email: CN.Doccheck@sgs.com

SGS-CSTC Standards Technical Services (Changzhou) Co., Ltd.
Hardlines

Building 30, No. 47, Qingyang North Road, Tianning District, Changzhou, China 213017 t (86-519) 85587753
 中国·常州·天宁区青洋北路47号30号楼 邮编: 213017 t (86-519) 85587753

www.sgs.com.cn
e sgs.china@sgs.com

| Test Item(s) | CAS NO. | Limit | Unit | MDL | 040 |
|--|---------------------------|-------|-------|-----|-----|
| Dibutyl Phthalate (DBP) | 84-74-2 | 1000 | mg/kg | 50 | ND |
| Benzylbutyl Phthalate (BBP) | 85-68-7 | 1000 | mg/kg | 50 | ND |
| Di(2-ethylhexyl)phthalate/Bis(2-ethylhexyl) phthalate (DEHP) | 117-81-7 | 1000 | mg/kg | 50 | ND |
| Diisononyl Phthalate (DINP) | 28553-12-0 /68515-48-0 | 1000 | mg/kg | 50 | ND |
| Di-n-octyl Phthalate (DNOP) | 117-84-0 | 1000 | mg/kg | 50 | ND |
| Diisodecyl Phthalate (DIDP) | 26761-40-0 /68515-49-1 | 1000 | mg/kg | 50 | ND |
| Dicyclohexyl Phthalates (DCHP) | 84-61-7 | 1000 | mg/kg | 50 | ND |
| Diisobutyl Phthalates (DIBP) | 84-69-5 | 1000 | mg/kg | 50 | ND |
| Di-n-pentyl Phthalates (DPENP) | 131-18-0 | 1000 | mg/kg | 50 | ND |
| Di-n-hexyl Phthalate (DnHP) | 84-75-3 | 1000 | mg/kg | 50 | ND |

Conclusion **PASS**

| Test Item(s) | CAS NO. | Limit | Unit | MDL | 041 |
|--|---------------------------|-------|-------|-----|-----|
| Dibutyl Phthalate (DBP) | 84-74-2 | 1000 | mg/kg | 50 | ND |
| Benzylbutyl Phthalate (BBP) | 85-68-7 | 1000 | mg/kg | 50 | ND |
| Di(2-ethylhexyl)phthalate/Bis(2-ethylhexyl) phthalate (DEHP) | 117-81-7 | 1000 | mg/kg | 50 | ND |
| Diisononyl Phthalate (DINP) | 28553-12-0 /68515-48-0 | 1000 | mg/kg | 50 | ND |
| Di-n-octyl Phthalate (DNOP) | 117-84-0 | 1000 | mg/kg | 50 | ND |
| Diisodecyl Phthalate (DIDP) | 26761-40-0 /68515-49-1 | 1000 | mg/kg | 50 | ND |
| Dicyclohexyl Phthalates (DCHP) | 84-61-7 | 1000 | mg/kg | 50 | ND |
| Diisobutyl Phthalates (DIBP) | 84-69-5 | 1000 | mg/kg | 50 | ND |
| Di-n-pentyl Phthalates (DPENP) | 131-18-0 | 1000 | mg/kg | 50 | ND |
| Di-n-hexyl Phthalate (DnHP) | 84-75-3 | 1000 | mg/kg | 50 | ND |

Conclusion **PASS**

Notes :

- (1) The limit is referenced to the requirement stated in San Francisco Case No. CGC-14-541130 and CPSIA&16 CFR 1307.



Unless otherwise agreed in writing, this document is issued by the Company subject to its General Conditions of Service printed overleaf, available on request or accessible at <http://www.sgs.com/en/Terms-and-Conditions.aspx> and, for electronic format documents, subject to Terms and Conditions for Electronic Documents at <http://www.sgs.com/en/Terms-and-Conditions/Terms-e-Documents.aspx>. Attention is drawn to the limitation of liability, indemnification and jurisdiction issues defined therein. Any holder of this document is advised that information contained hereon reflects the Company's findings at the time of its intervention only and within the limits of Client's instructions, if any. The Company's sole responsibility is to its Client and this document does not exonerate parties to a transaction from exercising all their rights and obligations under the transaction documents. This document cannot be reproduced except in full, without prior written approval of the Company. Any unauthorized alteration, forgery or falsification of the content or appearance of this document is unlawful and offenders may be prosecuted to the fullest extent of the law. Unless otherwise stated the results shown in this test report refer only to the sample(s) tested and such sample(s) are retained for 30 days only.
Attention: To check the authenticity of testing / inspection report & certificate, please contact us at telephone: (86-755) 8307 1443, or email: CN.Doccheck@sgs.com

SGS-CSTC Standards Technical Services (Changzhou) Co., Ltd.
 Hardlines

Building 30, No. 47, Qingyang North Road, Tianning District, Changzhou, China 213017 t (86-519)85587753
 中国·常州·天宁区青洋北路47号30号楼 邮编: 213017 t (86-519)85587753

www.sgs.com
 e sgs.china@sgs.com

(2) The reference limit applied in testing is based on particular California Proposition 65 settlements that are most similar to the tested product in the opinion of the lab. The testing in this report does not reflect a user's actual exposure to the tested chemical.

A manufacturer or retailer that is not named in the referenced settlement is not bound by that settlement, and may choose to comply with California Proposition 65 by clearly informing the consumer of potential exposure.

Remark:

For method of CPSC-CH-E1003-09.1/CPSC-CH-E1002-08.3/CPSC-CH-E1001-08.3: The result is calculated using the minimum sample weight.

For Others: Test was conducted on composite of random parts of the item as per client's request.

Unless otherwise stated, the decision rule for conformity reporting is based on Binary Statement for Simple Acceptance Rule ($w=0$) stated in ILAC-G8:09/2019.

Note: The testing was performed by SGS other internal laboratory.

10. Physical and mechanical tests consisting US CPSC 16 CFR 1500.48, 16 CFR 1500.49, 16 CFR 1501, 16 CFR 1500.51-53 And 16 CFR 1500.19

AS SPECIFIED IN PHYSICAL AND MECHANICAL TESTS CONSISTING US CPSC 16 CFR 1500.48, 16 CFR 1500.49, 16 CFR 1501, 16 CFR 1500.51-53 AND 16 CFR 1500.19

| Description | Result |
|--|----------------|
| Sharp point (16 CFR 1500.48) | Pass |
| Sharp edge (16 CFR 1500.49) | Pass |
| Small part (16 CFR 1501) | Not Applicable |
| Impact test (16 CFR 1500.51-53) | Pass |
| Bite test (16 CFR 1500.51-53) | Not Applicable |
| Flexure test (16 CFR 1500.51-53) | Not Applicable |
| Torque test (16 CFR 1500.51-53) | Pass |
| Tension test (16 CFR 1500.51-53) | Pass |
| Compression test (16 CFR 1500.51-53) | Not Applicable |
| MISBRANDED TOYS AND OTHER ARTICLES INTENDED FOR USE BY CHILDREN (16 CFR 1500.19) | Not Applicable |



Unless otherwise agreed in writing, this document is issued by the Company subject to its General Conditions of Service printed overleaf, available on request or accessible at <http://www.sgs.com/en/Terms-and-Conditions.aspx> and, for electronic format documents, subject to Terms and Conditions for Electronic Documents at <http://www.sgs.com/en/Terms-and-Conditions/Terms-e-Document.aspx>. Attention is drawn to the limitation of liability, indemnification and jurisdiction issues defined therein. Any holder of this document is advised that information contained hereon reflects the Company's findings at the time of its intervention only and within the limits of Client's instructions, if any. The Company's sole responsibility is to its Client and this document does not exonerate parties to a transaction from exercising all their rights and obligations under the transaction documents. This document cannot be reproduced except in full, without prior written approval of the Company. Any unauthorized alteration, forgery or falsification of the content or appearance of this document is unlawful and offenders may be prosecuted to the fullest extent of the law. Unless otherwise stated the results shown in this test report refer only to the sample(s) tested and such sample(s) are retained for 30 days only.

Attention: To check the authenticity of testing / inspection report & certificate, please contact us at telephone: (86-755) 8307 1443, or email: CN.Doccheck@sgs.com
 Building 30, No. 47, Qingyang North Road, Tianning District, Changzhou, China 213017 t (86-519) 85587753 www.sgs.com.cn
 中国·常州·天宁区青洋北路47号30号楼 邮编: 213017 t (86-519) 85587753 e sgs.china@sgs.com

11. US CPSC 16 CFR 1500.44 – Method for determining extremely flammable and flammable solids
 AS SPECIFIED IN US CPSC 16 CFR 1500.44 – METHOD FOR DETERMINING EXTREMELY
 FLAMMABLE AND FLAMMABLE SOLIDS

Result Data:

| Sample | Burning Rate(inch/sec) |
|---|------------------------|
| BATTERY-POWERED RIDE-ON CHILDREN'S CARS/RIDE ON VEHICLE | DNI |

Requirement: A toy / component is considered a “flammable solid” if it ignites and burns with a self-sustaining flame at a rate greater than 0.10 in/sec along its major axis.
 DNI=Did Not Ignite

12. Tracking label per Consumer Product Safety Improvement Act (CPSIA) of 2008 section 103 tracking labels for children’s products.

Notes:

Note 1: As specified in Consumer Product Safety Improvement Act (CPSIA) of 2008 section 103 tracking labels for children’s products.

- Tracking label found on the packaging:

- 1) Name: Chuzhou Bettyma Baby Carrier Co.,Ltd.
- 2) Location: Shitan Modern Industrial Park, Quanjiao Chuzhou, Anhui, China
- 3) Date: 06 07 2022
- 4) Cohort information: BDM-0923

- Tracking label found on the toy:

- 5) Name: Chuzhou Bettyma Baby Carrier Co.,Ltd.
- 6) Location: Shitan Modern Industrial Park, Quanjiao Chuzhou, Anhui, China
- 7) Date: 06 07 2022
- 8) Cohort information: BDM-0923

Note 2: 1). The tracking label assessment was based on the submitted samples and the information provided by the applicant. There was no verification on the validity of such information.

2). City and State, or administrative state shall be also provided for the source (location) information.



Unless otherwise agreed in writing, this document is issued by the Company subject to its General Conditions of Service printed overleaf, available on request or accessible at <http://www.sgs.com/en/Terms-and-Conditions.aspx> and, for electronic format documents, subject to Terms and Conditions for Electronic Documents at <http://www.sgs.com/en/Terms-and-Conditions/Terms-e-Documents.aspx>. Attention is drawn to the limitation of liability, indemnification and jurisdiction issues defined therein. Any holder of this document is advised that information contained hereon reflects the Company's findings at the time of its intervention only and within the limits of Client's instructions, if any. The Company's sole responsibility is to its Client and this document does not exonerate parties to a transaction from exercising all their rights and obligations under the transaction documents. This document cannot be reproduced except in full, without prior written approval of the Company. Any unauthorized alteration, forgery or falsification of the content or appearance of this document is unlawful and offenders may be prosecuted to the fullest extent of the law. Unless otherwise stated the results shown in this test report refer only to the sample(s) tested and such sample(s) are retained for 30 days only.
 Attention: To check the authenticity of testing /inspection report & certificate, please contact us at telephone: (86-755) 8307 1443, or email: CN.Doccheck@sgs.com

SGS-CSTC Shanghai Technical Services (Chuzhou) Co., Ltd.
 Hardlines

Building 30, No. 47, Qingyang North Road, Tianming District, Changzhou, China 213017 t (86-519)85587753
 中国·常州·天宁区青洋北路47号30号楼 邮编: 213017 t (86-519)85587753

www.sgs.com
sgs.china@sgs.com

Photo Appendix



Physical Sample



Physical Sample



Product view



Product view



Product view



Product view



Unless otherwise agreed in writing, this document is issued by the Company subject to its General Conditions of Service printed overleaf, available on request or accessible at <http://www.sgs.com/en/Terms-and-Conditions.aspx> and, for electronic format documents, subject to Terms and Conditions for Electronic Documents at <http://www.sgs.com/en/Terms-and-Conditions/Terms-e-Documents.aspx>. Attention is drawn to the limitation of liability, indemnification and jurisdiction issues defined therein. Any holder of this document is advised that information contained hereon reflects the Company's findings at the time of its intervention only and within the limits of Client's instructions, if any. The Company's sole responsibility is to its Client and this document does not exonerate parties to a transaction from exercising all their rights and obligations under the transaction documents. This document cannot be reproduced except in full, without prior written approval of the Company. Any unauthorized alteration, forgery or falsification of the content or appearance of this document is unlawful and offenders may be prosecuted to the fullest extent of the law. Unless otherwise stated the results shown in this test report refer only to the sample(s) tested and such sample(s) are retained for 30 days only.

Attention: To check the authenticity of testing/inspection report & certificate, please contact us at telephone: (86-755) 8307 1443, or email: CN.Doccheck@sgs.com
 Building 30, No. 47, Qingyang North Road, Tianning District, Changzhou, China 213017 t (86-519) 85587753
 中国·常州·天宁区青洋北路47号30号楼 邮编: 213017 t (86-519) 85587753

www.sgs.com
sgs.china@sgs.com



Product view



Data cable view



Part view



Internal view

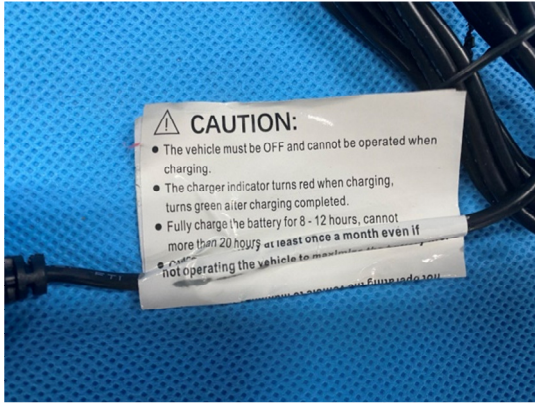


Charger view



Charger label view





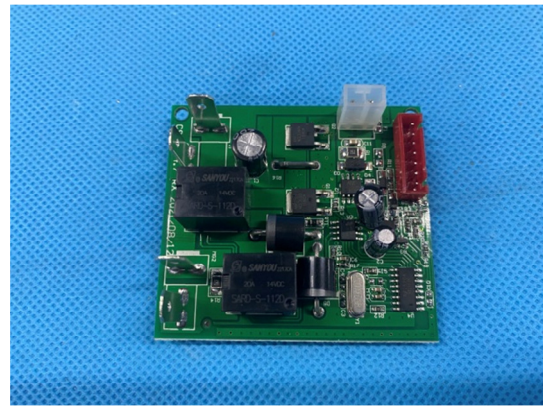
Charger label view



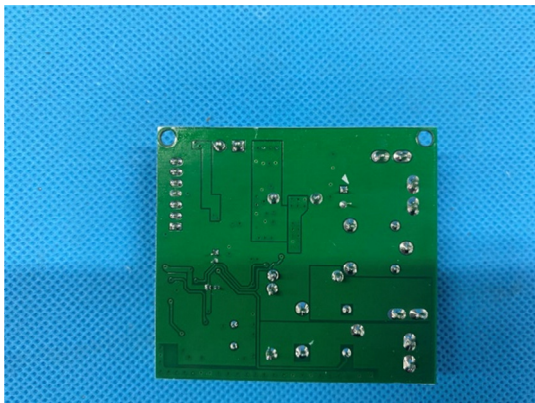
Battery view



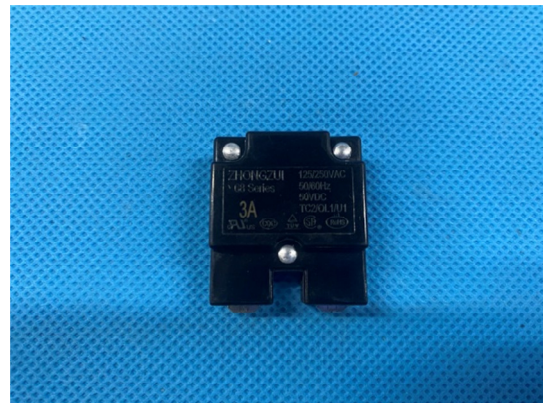
Internal control view



PCB view



PCB view

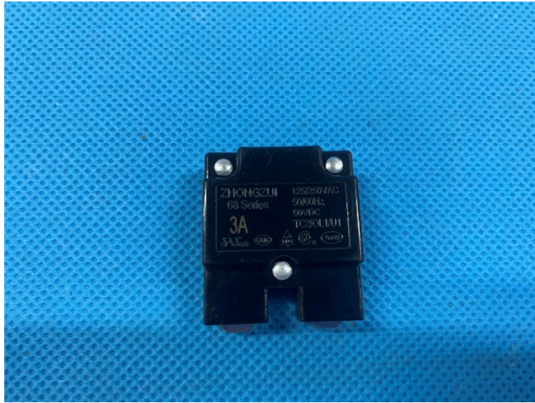


Resettable device view



Unless otherwise agreed in writing, this document is issued by the Company subject to its General Conditions of Service printed overleaf, available on request or accessible at <http://www.sgs.com/en/Terms-and-Conditions.aspx> and, for electronic format documents, subject to Terms and Conditions for Electronic Documents at <http://www.sgs.com/en/Terms-and-Conditions/Terms-e-Documents.aspx>. Attention is drawn to the limitation of liability, indemnification and jurisdiction issues defined therein. Any holder of this document is advised that information contained hereon reflects the Company's findings at the time of its intervention only and within the limits of Client's instructions, if any. The Company's sole responsibility is to its Client and this document does not exonerate parties to a transaction from exercising all their rights and obligations under the transaction documents. This document cannot be reproduced except in full, without prior written approval of the Company. Any unauthorized alteration, forgery or falsification of the content or appearance of this document is unlawful and offenders may be prosecuted to the fullest extent of the law. Unless otherwise stated the results shown in this test report refer only to the sample(s) tested and such sample(s) are retained for 30 days only.

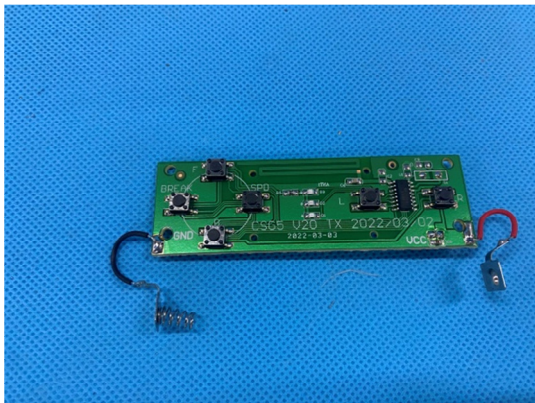
Attention: To check the authenticity of testing/inspection report & certificate, please contact us at telephone: (86-755) 8307 1443, or email: CN.Doccheck@sgs.com



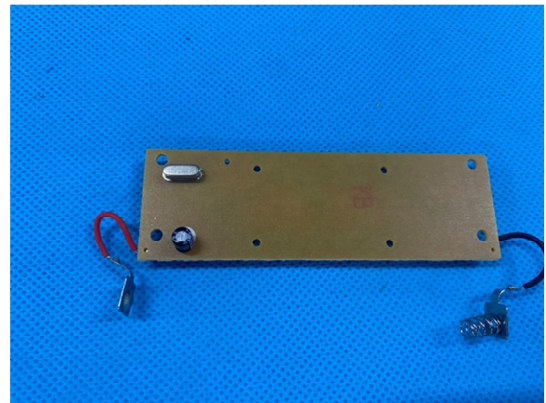
Resettable device view



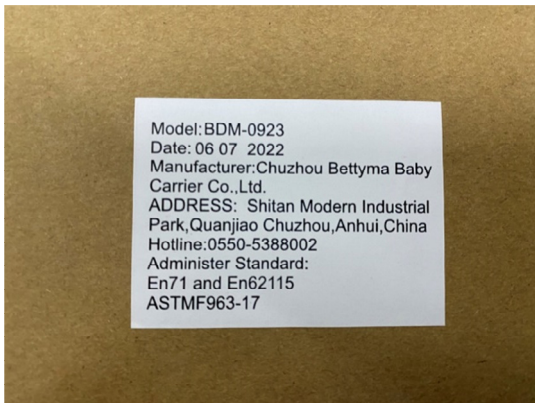
Switch view



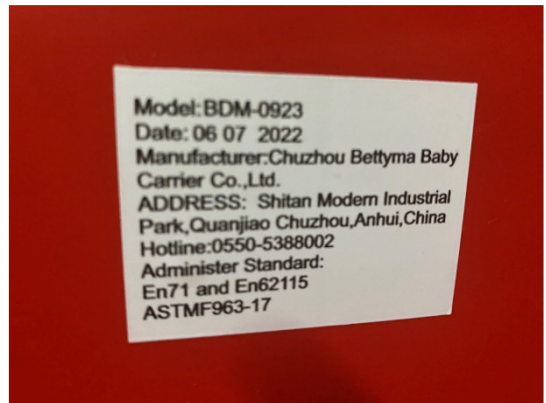
Switch PCB view



Switch PCB view



Tracking Label



Tracking Label

Model: BDM-0923
 Date: 06 07 2022
 Manufacturer: Chuzhou Bettyma Baby Carrier Co., Ltd.
 ADDRESS: Shitan Modern Industrial Park, Quanjiao Chuzhou, Anhui, China
 Hotline: 0550-5388002
 Administer Standard: En71 and En62115
 ASTM F963-17

Model: BDM-0923
 Date: 06 07 2022
 Manufacturer: Chuzhou Bettyma Baby Carrier Co., Ltd.
 ADDRESS: Shitan Modern Industrial Park, Quanjiao Chuzhou, Anhui, China
 Hotline: 0550-5388002
 Administer Standard: En71 and En62115
 ASTM F963-17



Unless otherwise agreed in writing, this document is issued by the Company subject to its General Conditions of Service printed overleaf, available on request or accessible at <http://www.sgs.com/en/Terms-and-Conditions.aspx> and, for electronic format documents, subject to Terms and Conditions for Electronic Documents at <http://www.sgs.com/en/Terms-and-Conditions/Terms-e-Documents.aspx>. Attention is drawn to the limitation of liability, indemnification and jurisdiction issues defined therein. Any holder of this document is advised that information contained hereon reflects the Company's findings at the time of its intervention only and within the limits of Client's instructions, if any. The Company's sole responsibility is to its Client and this document does not exonerate parties to a transaction from exercising all their rights and obligations under the transaction documents. This document cannot be reproduced except in full, without prior written approval of the Company. Any unauthorized alteration, forgery or falsification of the content or appearance of this document is unlawful and offenders may be prosecuted to the fullest extent of the law. Unless otherwise stated the results shown in this test report refer only to the sample(s) tested and such sample(s) are retained for 30 days only.
Attention: To check the authenticity of testing/inspection report & certificate, please contact us at telephone: (86-755) 8307 1443, or email: CN.Doccheck@sgs.com
 Building 30, No. 47, Qingyang North Road, Tianning District, Changzhou, China 213017 t (86-519) 85587753 www.sgs.com.cn
 中国·常州·天宁区青洋北路47号30号楼 邮编: 213017 t (86-519) 85587753 e sgs.china@sgs.com



Label view



Label view



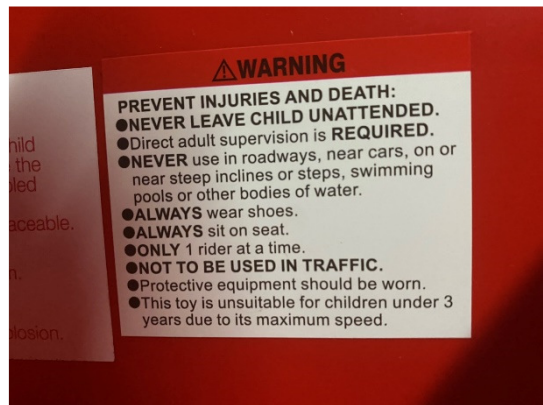
Label view



Label view



Label view



Label view



Unless otherwise agreed in writing, this document is issued by the Company subject to its General Conditions of Service printed overleaf, available on request or accessible at <http://www.sgs.com/en/Terms-and-Conditions.aspx> and, for electronic format documents, subject to Terms and Conditions for Electronic Documents at <http://www.sgs.com/en/Terms-and-Conditions/Terms-e-Documents.aspx>. Attention is drawn to the limitation of liability, indemnification and jurisdiction issues defined therein. Any holder of this document is advised that information contained hereon reflects the Company's findings at the time of its intervention only and within the limits of Client's instructions, if any. The Company's sole responsibility is to its Client and this document does not exonerate parties to a transaction from exercising all their rights and obligations under the transaction documents. This document cannot be reproduced except in full, without prior written approval of the Company. Any unauthorized alteration, forgery or falsification of the content or appearance of this document is unlawful and offenders may be prosecuted to the fullest extent of the law. Unless otherwise stated the results shown in this test report refer only to the sample(s) tested and such sample(s) are retained for 30 days only.

Attention: To check the authenticity of testing / inspection report & certificate, please contact us at telephone: (86-755) 8307 1443, or email: CN.Doccheck@sgs.com

SGS-CSTC 常州检测技术有限公司
Hardlines

Building 30, No. 47, Qingyang North Road, Tianning District, Changzhou, China 213017 t (86-519) 85587753
中国·常州·天宁区青洋北路47号30号楼 邮编: 213017 t (86-519) 85587753

www.sgs.com
www.sgs.china@sgs.com



Label view



Packaging



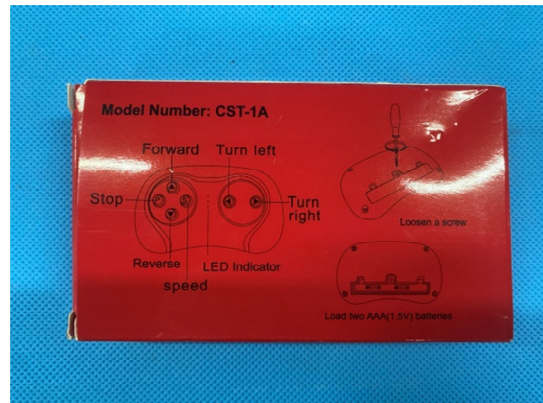
Packaging



Packaging



Control label

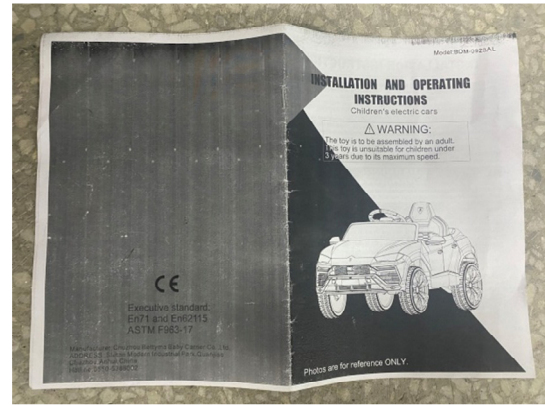


Control Packaging





Control Packaging



Manual view



Chemical Test Sample

Client's reference information:



Client Reference Photo



Client Reference Photo



Unless otherwise agreed in writing, this document is issued by the Company subject to its General Conditions of Service printed overleaf, available on request or accessible at <http://www.sgs.com/en/Terms-and-Conditions.aspx> and, for electronic format documents, subject to Terms and Conditions for Electronic Documents at <http://www.sgs.com/en/Terms-and-Conditions/Terms-e-Documents.aspx>. Attention is drawn to the limitation of liability, indemnification and jurisdiction issues defined therein. Any holder of this document is advised that information contained hereon reflects the Company's findings at the time of its intervention only and within the limits of Client's instructions, if any. The Company's sole responsibility is to its Client and this document does not exonerate parties to a transaction from exercising all their rights and obligations under the transaction documents. This document cannot be reproduced except in full, without prior written approval of the Company. Any unauthorized alteration, forgery or falsification of the content or appearance of this document is unlawful and offenders may be prosecuted to the fullest extent of the law. Unless otherwise stated the results shown in this test report refer only to the sample(s) tested and such sample(s) are retained for 30 days only.

SGS-CSTC Inspection & Testing Services (Changzhou) Co., Ltd.
Hardlines

Building 30, No. 47, Qingyang North Road, Tianning District, Changzhou, China 213017 t (86-519)85587753
中国·常州·天宁区青洋北路47号30号楼 邮编: 213017 t (86-519)85587753

www.sgs.com
sgs.china@sgs.com



Client Reference Photo



Client Reference Photo



Client Reference Photo



Client Reference Photo

Test Part Description :

| Specimen No. | SGS Sample ID | Description |
|--------------|------------------|---------------------------------------|
| SN1 | SHA22-078772.001 | Red plastic calipers |
| SN2 | SHA22-078772.002 | Silvery plastic disc brake |
| SN3 | SHA22-078772.003 | Red plastic key(Start/Stop) |
| SN4 | SHA22-078772.004 | Red plastic switch(O/-) |
| SN5 | SHA22-078772.005 | Black plastic switch(Forward/Reverse) |
| SN6 | SHA22-078772.006 | White plastic key |
| SN7 | SHA22-078772.007 | Translucent black plastic windshield |
| SN8 | SHA22-078772.008 | Transparent plastic light |
| SN9 | SHA22-078772.009 | Black plastic wheel hub |
| SN10 | SHA22-078772.010 | Black plastic tire |
| SN11 | SHA22-078772.011 | Black plastic steering wheel |
| SN12 | SHA22-078772.012 | Black plastic dashboard |
| SN13 | SHA22-078772.013 | Black plastic door |



Unless otherwise agreed in writing, this document is issued by the Company subject to its General Conditions of Service printed overleaf, available on request or accessible at <http://www.sgs.com/en/Terms-and-Conditions.aspx> and, for electronic format documents, subject to Terms and Conditions for Electronic Documents at <http://www.sgs.com/en/Terms-and-Conditions/Terms-e-Document.aspx>. Attention is drawn to the limitation of liability, indemnification and jurisdiction issues defined therein. Any holder of this document is advised that information contained hereon reflects the Company's findings at the time of its intervention only and within the limits of Client's instructions, if any. The Company's sole responsibility is to its Client and this document does not exonerate parties to a transaction from exercising all their rights and obligations under the transaction documents. This document cannot be reproduced except in full, without prior written approval of the Company. Any unauthorized alteration, forgery or falsification of the content or appearance of this document is unlawful and offenders may be prosecuted to the fullest extent of the law. Unless otherwise stated the results shown in this test report refer only to the sample(s) tested and such sample(s) are retained for 30 days only.

Attention: To check the authenticity of testing/inspection report & certificate, please contact us at telephone: (86-755) 8307 1443, or email: CN.Doccheck@sgs.com

SGS-CSTC Standard Technical Services (Changzhou) Co., Ltd.
Hardlines

Building 30, No. 47, Qingyang North Road, Tianning District, Changzhou, China 213017 t (86-519)85587753
中国·常州·天宁区青洋北路47号30号楼 邮编: 213017 t (86-519)85587753

www.sgs.com
sgs.china@sgs.com

Test Report

No.: CZHL2206005319TY

Date: AUG. 09, 2022

Page 43 of 44

| Specimen No. | SGS Sample ID | Description |
|--------------|------------------|--|
| SN14 | SHA22-078772.014 | White plastic door |
| SN15 | SHA22-078772.015 | Red plastic door |
| SN16 | SHA22-078772.016 | Yellow plastic door |
| SN17 | SHA22-078772.017 | Pink plastic door |
| SN18 | SHA22-078772.018 | Blue plastic door |
| SN19 | SHA22-078772.019 | Green plastic door |
| SN20 | SHA22-078772.020 | Red plastic locker(Door) |
| SN21 | SHA22-078772.021 | Black plastic seat |
| SN22 | SHA22-078772.022 | Black plastic buckle |
| SN23 | SHA22-078772.023 | White plastic remote control |
| SN24 | SHA22-078772.024 | Black plastic key on remote control |
| SN25 | SHA22-078772.025 | Black plastic accelerator pedal |
| SN26 | SHA22-078772.026 | Black/Yellow plastic sticker(Logo) |
| SN27 | SHA22-078772.027 | Black webbing |
| SN28 | SHA22-078772.028 | White paper sticker with black |
| SN29 | SHA22-078772.029 | White paper sticker with red |
| SN30 | SHA22-078772.030 | Colorful paper sticker(Dashboard) |
| SN31 | SHA22-078772.031 | Silvery paper sticker(Mirror) |
| SN32 | SHA22-078772.032 | Black coating on metal |
| SN33 | SHA22-078772.033 | Silvery coating on steering wheel |
| SN34 | SHA22-078772.034 | Red plastic calipers + Silvery plastic disc brake + Red plastic key(Start/Stop) |
| SN35 | SHA22-078772.035 | Red plastic switch(O/-) + Black plastic switch(Forward/Reverse) + White plastic key |
| SN36 | SHA22-078772.036 | Translucent black plastic windshield + Transparent plastic light + Black plastic wheel hub |
| SN37 | SHA22-078772.037 | Black plastic tire + Black plastic steering wheel + Black plastic dashboard |
| SN38 | SHA22-078772.038 | Black plastic door + White plastic door + Red plastic door |
| SN39 | SHA22-078772.039 | Yellow plastic door + Pink plastic door + Blue plastic door |
| SN40 | SHA22-078772.040 | Green plastic door + Red plastic locker(Door) + Black plastic seat |
| SN41 | SHA22-078772.041 | Black plastic buckle + White plastic remote control + Black plastic key on remote control |



Unless otherwise agreed in writing, this document is issued by the Company subject to its General Conditions of Service printed overleaf, available on request or accessible at <http://www.sgs.com/en/Terms-and-Conditions.aspx> and, for electronic format documents, subject to Terms and Conditions for Electronic Documents at <http://www.sgs.com/en/Terms-and-Conditions/Terms-e-Documents.aspx>. Attention is drawn to the limitation of liability, indemnification and jurisdiction issues defined therein. Any holder of this document is advised that information contained hereon reflects the Company's findings at the time of its intervention only and within the limits of Client's instructions, if any. The Company's sole responsibility is to its Client and this document does not exonerate parties to a transaction from exercising all their rights and obligations under the transaction documents. This document cannot be reproduced except in full, without prior written approval of the Company. Any unauthorized alteration, forgery or falsification of the content or appearance of this document is unlawful and offenders may be prosecuted to the fullest extent of the law. Unless otherwise stated the results shown in this test report refer only to the sample(s) tested and such sample(s) are retained for 30 days only.

Attention: To check the authenticity of testing/inspection report & certificate, please contact us at telephone: (86-755) 8307 1443, or email: CN.Doccheck@sgs.com

SGS-CSTC Standards Technical Services (Changzhou) Co., Ltd.
Hardlines

Building 30, No. 47, Qingyang North Road, Tianning District, Changzhou, China 213017 t (86-519)85587753
中国·常州·天宁区青洋北路47号30号楼 邮编: 213017 t (86-519)85587753

www.sgs.com
www.sgs.com
www.sgs.com

Result/Rating/Record Key(s)

- I. Result/Rating Keys: P = Pass = Meet; F = Fail = Not Meet; N/A = Not applicable = Not suitable; NR = NC = Test not conduct/requested per client request; TT = Test terminated due to the earlier failure of last test.
- II. Record Keys: "C:" means Claimed parameter; "A:" means Actual recorded from test; "D:" means Data for reference only.

General Report Note(s)

- A. N.B. Only applicable clauses were shown.
- B. (1) 1mg/kg = 0.0001% (2) MDL = Method Detection Limit (3) ND = Not Detected (< MDL)
(4) "-" = Not Regulated
- C. Unless otherwise stated the results shown in this test report refer only to the sample(s) tested.
- D. This document cannot be used for publicity, without prior written approval of the SGS.
- E. Since the data and / or information above division line of front page is provided by the applicant, the relevant results or conclusions of this report are only made for these data and / or information, SGS is not responsible for the authenticity, integrity and results of the data and information and / or the validity of the conclusion. Testing results only apply to the sample as received.
- F. The declaration of conformity is only based on the actual value of laboratory activity, measurement uncertainty of the results not take into account.

*** End of Report ***



Unless otherwise agreed in writing, this document is issued by the Company subject to its General Conditions of Service printed overleaf, available on request or accessible at <http://www.sgs.com/en/Terms-and-Conditions.aspx> and, for electronic format documents, subject to Terms and Conditions for Electronic Documents at <http://www.sgs.com/en/Terms-and-Conditions/Terms-e-Documents.aspx>. Attention is drawn to the limitation of liability, indemnification and jurisdiction issues defined therein. Any holder of this document is advised that information contained hereon reflects the Company's findings at the time of its intervention only and within the limits of Client's instructions, if any. The Company's sole responsibility is to its Client and this document does not exonerate parties to a transaction from exercising all their rights and obligations under the transaction documents. This document cannot be reproduced except in full, without prior written approval of the Company. Any unauthorized alteration, forgery or falsification of the content or appearance of this document is unlawful and offenders may be prosecuted to the fullest extent of the law. Unless otherwise stated the results shown in this test report refer only to the sample(s) tested and such sample(s) are retained for 30 days only.

Attention: To check the authenticity of testing / inspection report & certificate, please contact us at telephone: (86-755) 8307 1443, or email: CN.Doccheck@sgs.com

SGS-CSTC Standards Technical Services (Changzhou) Co., Ltd.
Hardlines

Building 30, No. 47, Qingyang North Road, Tianning District, Changzhou, China 213017 t (86-519)85587753
中国·常州·天宁区青洋北路47号30号楼 邮编: 213017 t (86-519)85587753

www.sgs.com
sgs.china@sgs.com